

SPRING BULLETIN 2026



TEMPLE EMANUEL

of SOUTH HILLS

LIVING · LEARNING · LEADING

Check out this season's Bulletin to read what's happening at Temple Emanuel this April, May, and June!



Our Purim Spielers performed in "The Horrible Wizard of Shushan," a Temple Emanuel original Spiel!



The South Hills community joined at Beth El Congregation for our annual family-friendly Purim Carnival!



Volunteers for Shabbat of Service baked loaves of challah for Caring Community Shabbat bags.

INSIDE ISSUE

Temple Family Menschening

Worship Schedule

Celebrating 75 Years

Greetings from Rabbi Meyer & Cantor Jacobson

Board Message from President Beth Schwartz

ECDC Message from Director Kate Louik

Torah Center Message from Director Steph McFerron

Spring Programming

Donations

Contact Us



Temple Family Menschening

*The information on this page was compiled on
Friday, March 20, 2026.*

SHALOM!

**A warm welcome goes to new and returning
community members of our Temple family:**

- **Amanda Lakomy & David Solomon and their daughters, Olivia & Lilah**
- **Michaela Snider**

Births

Mazal Tov!

- **Miriam Eve Zacharias**, daughter of Molly & Robert Zacharias, sister of Ruthie Zacharias, granddaughter of Karen Kornblum, niece of Jake and Charlie Berntsen (December 23)
- **Caroline Parker Davidson**, first grandchild of Laura & Brian Davidson (February 2)
- **Lyla Paige Silberstein**, granddaughter of Barbara & Bryan Rosenberger, daughter of Lisa Rosenberger and Marc Silberstein (February 6)
- **Tate Richard Snodgrass**, first grandchild of Lynn & Carl Bahm, son of Jennifer and Austin Snodgrass, great grandson of Ellie Bahm, nephew of Alexa Mazur and Zachary Bahm, great nephew of Amy & David Bahm, cousin of Bryan and Evan Bahm (February 8)
- **Luka Elijah Lamanna**, grandson of Elisia & Chuck Silverstein, son of Danielle & Michael Lamanna (February 9)
- **Owen Aiden Kindler**, grandson of Debbie & Alex Kindler, son of Jenna & Kevin Kindler, brother of Myles Kindler, great-nephew of Peggy Kindler (February 27)
- **Isabel Grace Pokorney**, daughter of Joel Pokorney and Kenyan King-Pokorney, sister of Lyla Pokorney (March 9)

We Mourn the Loss of:

- **John Norman Miksic**, father of Vonya (Nate) Eisinger, grandfather of Geneva and Vienna Eisinger (October 25)
- **Klara Gavrilova**, grandmother of Anastasia (Matthew) Abramson, great-grandmother of Sofia & Lily Abramson (January 2)
- **David Joel Pober**, brother of Elaine (Mark) Pattak (January 27)
- **Carol Schneider**, sister of Michael Schneider (Cindy Bronen) (January 29)
- **Sheldon S. Abramovitz**, brother of Ruben Abramovitz (January 30)
- **Harriet N. Kruman**, aunt of Elaine (Alan) London (January 31)
- **Janet Rubin**, sister of Harvey (Lynn) Rubin (February 3)
- **Thomas Kohn**, stepfather of Holly (Bruce) Rudoy and Scot (Carrie) Lehman, grandfather of Madelyn Ensslin, Zach Rudoy and Eli, Jacob and Josh Lehman (February 11)
- **Margery Morgenstern**, mother of Eric (Marsha) Morgenstern, and grandmother of Zachary Morgenstern (March 2)
- **Roberta Levinthal Mallin**, sister of Charles (Beth) Levinthal, aunt of David (Sarah) Levinthal, great aunt of Aaron, Michael, Zoe, Emily and Andrew Levinthal (March 9)
- **Faye Lichtenstein**, mother of Marcy Bernson, grandmother of Seth, Evan & Melissa Bernson (March 17)

Marriages

Mazal tov to Lexi Brenner, granddaughter of Rubin Abramovitz, on her marriage to Martin Schwartz on February 28, 2026!

Mazal tov to Zach Rudoy, brother of Madelyn (Dylan) Ensslin; nephew of Debbie & Paul Rudoy and Scot & Carrie Lehman; and grandson of Judi and Iz, z"l, Rudoy and Rita, z"l, and Tom, z"l, Kohn, on his marriage to Lauren Carey on March 21, 2026!



T'Filah

WORSHIP & TORAH STUDY SCHEDULE

Friday Afternoon Text Study at 1:00 PM

Aggadah, the storytelling of the Jewish community, adds richness and depth to our understanding of biblical texts, commandments, and Jewish values. Join Rabbi Meyer for a 45-minute exploration of texts that will enliven your understanding and appreciation of Jewish life on [Zoom by clicking here](#).

Shabbat Evening Services – Fridays at 7:00 PM

Join us for our Shabbat evening services in the Beit HaT'filah. You can also continue to connect with us via [Temple's website](#), [Facebook](#), or [YouTube](#). An electronic copy of Mishkan T'filah, the congregation's prayer book, can be accessed [here](#). Immediately following the service, enjoy a nosh at the oneg and schmooze with fellow congregants!

Shabbat Mornings at 8:00 AM

Our Shabbat morning videos will be released on [Facebook](#) and [YouTube](#). One will include a traditional Aliyah from our Sefer Torah in Hebrew and translation, and the second a brief explanation of how the themes and lessons of the parasha (portion) relate to our modern lives.

Shabbat Morning Torah Study – Saturdays at 9:00 AM

Join Rabbi Meyer or Cantor Jacobson in person at Temple or on [Zoom](#) to discuss the weekly parasha.

Havdalah – Saturdays at 8:00 PM

Join us virtually on Temple's [Facebook page](#).

Lay-Led Morning Minyan – Sundays at 9:30 AM

In person in the Beit HaT'filah or click [here](#) to join virtually on Zoom.

Special Shabbatot Fridays at 7:00 PM

May 8
**Special Shabbat Honoring
Cantor Kalix Jacobson**

May 22
Confirmation

June 5
**Special Shabbat Welcoming
Jacob Shinder**

June 12
Pride Shabbat

B'nei Mitzvah Services Saturdays at 10:30 AM

April 11
Benjamin Rovner

May 9
Enzo Zisman

May 16
Kat Oppenheim

May 23
Benjamin and El Margolis

Special Services

May 21
Tikkun Leil Shavuot

June 6
Interfaith Pride Service

Celebrating 75 Years

A MESSAGE FROM SARAH MANGAN PROGRAMMING AND COMMUNICATIONS DIRECTOR

On April 28, 1951, a group of Jewish families gathered for a charter meeting to establish a Reform synagogue in Mt. Lebanon. These families had already been meeting to discuss the need for such a Temple in the South Hills, to form a membership committee, and to give this dream a name: Temple Emanuel of South Hills.

From that moment on, Temple Emanuel of South Hills grew in number, gathering committee and board members to meet, Sisterhood and Brotherhood groups to engage in social events, religious school classes to learn, and congregants to worship in spaces across the South Hills, most notably including Howe Elementary School.

Rabbi Philip Frankel was named as Temple Emanuel's first rabbi in May of 1951, and began his work leading the congregation later that summer. On October 26, 1951, the Union of American Hebrew Congregations certified Temple Emanuel of South Hills as a member. By 1952, the need for our own space became increasingly apparent, and a building committee formed, later selecting the land on Bower Hill Road where Temple Emanuel still stands today. Renowned architect Percival Goodman was named to design the building in March of 1953, and the first stage of our present Temple was dedicated in December of 1955 and completed in 1962.

In the years since, we have continued to expand our building to include the elevator and kitchen as well as the extension that includes additional offices, our community room, the library, and, of course, the Beit HaT'filah. With these expansions, our community has grown, too. We are so proud of the community that has flourished here at Temple Emanuel over the last 75 years, and thankful that *you* are part of it.

As we look ahead to celebrating Temple Emanuel's 75th anniversary together this year, we aren't just celebrating the past, but also the future that each of you help us build through your commitment to ensuring Temple Emanuel continues to thrive and through your participation in services, programs, and learning opportunities.

Between May and April of next year, we hope that you will join us in celebration of Temple's 75 years. We will kick off our celebrations on Sunday, May 31st with cappuccino and cheesecake, a nod to Shavuot and the giving of Torah. Please save the date to join us in the fall for a special Shabbat service on October 30th in honor of Temple Emanuel's past and future. More details about both events to come, so please keep a look out in your emails. If you have any issues receiving emails from Temple Emanuel, please reach out to Sarah Mangan at smangan@templeemanuelpgh.org.

Celebrate 75 Years

Spring Celebration *Fall Special Shabbat*
Sunday, May 31, 2026 **Friday, October 30, 2026**
2:00-4:00 PM **7:00 PM**

and more ways to celebrate throughout the year!

Greetings



A MESSAGE FROM RABBI AARON MEYER

More than Shabbat service attendance, more than fasting on Yom Kippur, more even than lighting the Chanukah candles...attending a Passover seder is American Jews' most-observed Jewish ritual. What is it about this holiday that captures our hearts, imaginations, and stomachs? The answers are likely as diverse as the people sitting around your seder table, and I would encourage you to ask them directly. For some it might be family tradition, passing on that which has been important to generations. For others it might be the confluence of traditional foods, fine wines (warning, blasphemy ahead: it doesn't HAVE to be Manischewitz!), and a home-based

ritual. For others still it could be the importance of passing on Jewish values as we remember to care for the stranger for we were all strangers in the land of Egypt. Why is Passover important to *you*?

For me, it's the continued reminder of the Jewish people's resilience. When we tell the story of leaving Egypt as if we ourselves were there, we embrace what researchers Dr. Marshall Duke and Dr. Robyn Fivush call the [oscillating family narrative](#). Drawing on the highs and lows of our historical family story, we develop both an "intergenerational self" – the knowledge that we are connected to something more enduring than ourselves – and the experience to know that things will get better.

To make it even better, we also have a table-thumping expression of our gratitude thrown into the mix. "Dayeinu: it would have been enough" we say – we sing – in recognition of God's many blessings and miracles. It would have been sufficient if we made it out of Egypt but our captors were not punished. If we had been given sustenance in the desert but not the concept of Shabbat. If we had been given Torah but not the land of Israel. Dayeinu: it would have been enough.

Just as these words can be used to express gratitude for events gone by, so too can they be used in recognition of the good we might currently be experiencing. What would you add to a modern-day version of Dayeinu?

- If every Jew feels a sense of home and community somewhere in the Jewish world, even if current events make everything feel increasingly hard: Dayeinu.
- If antisemitism is confronted by Jews and our allies alike, even though hate speech and dangerous acts are on the rise: Dayeinu.
- If future generations can experience positive connections to Jewish life around the seder table, even if they are growing up in a more hostile world: Dayeinu.

As you gather 'round your seder table this year, I hope you will engage in ever-new conversations along with a retelling of our ancestor's plight. Why *is* Passover important to you? What are you grateful for even in a challenging world?

Next year in a better world, next year in Jerusalem!

Greetings

A MESSAGE FROM CANTOR KALIX JACOBSON

Dear Temple Emanuel family,

With deep gratitude and so much love, I write this final bulletin letter. These past three years have been filled with growth, joy, and sacred moments that I will carry with me always. I have cherished the privilege of standing with you in prayer, celebrating your simchas, sitting with you in difficult times, and simply being together as a community.



In what feels like such a short time, we have created so much side by side. We have watched our Beit HaT'filah fill with familiar faces and new ones, week after week, increasing our attendance of services significantly. We have laughed and sung our way through three Purim spiels that packed our beloved Temple—most recently our Wizard of Oz/Wicked musical. We have brought the sound and spirit to our High Holy Days in a way that felt like coming home for so many of us. I have had the profound honor of preparing many of our young people for b'nai mitzvah and getting to know them—not only as students, but as the remarkable individuals and Hebrew learners they are. We have learned together, served together, traveled together, and lifted our voices together here in the South Hills, in Washington, DC, in Harrisburg, and throughout Pittsburgh.

I am endlessly proud of what we have built—and even more grateful that we built it with one another. As my time as your cantor comes to a close, please know that my connection to you does not. You are not simply people I have served—you are people I love. I want to keep hearing about your lives: the joyful news, the everyday moments, the sorrows, and everything in between. You have welcomed me into your families, and you will always be part of mine.

In these remaining months, my door and my calendar are open. If you want to share a cup of coffee, linger over lunch, talk about something on your heart, or just kibbitz for a while, please reach out. Being with you has been the greatest gift of my time here, and I want to savor as much of it as I can.

Thank you for the trust you placed in me, for the music we made together, and for the love you have shown me. The experiences and opportunities I found in this extraordinary congregation are what give me the courage to take this next step into the unknown as I start life as solo clergy.

I will carry you with me in every note I will ever sing.

B'Shirah,
Cantor Kalix Jacobson



The cast of our Purim Spiel singing "Somewhere Over the Rainbow."



Board Update

A MESSAGE FROM BETH SCHWARTZ TEMPLE EMANUEL BOARD PRESIDENT

It's time for spring. Depending when I'm writing this and when you are reading this, it may feel like spring or it may feel like winter, or maybe it will feel like summer: such is the nature of spring.

As we move from spring into summer, we round out our successful first year of Temple Emanuel under the new financial, governance and membership models. We also move into Temple Emanuel's 75th year as a congregational community. This is a good time to celebrate where we came from, where we are, and where we are headed.

In that light, we bring a new twist to our Annual Meeting as we join together at a Shabbat Dinner on Friday evening, May 8th. Please join us to hear an overview of the past year at Temple Emanuel, celebrate our congregants, and bid Cantor Kalix farewell as they reach for new heights.

Continuing a tradition of Temple's fiscal-year cadence, on Sunday May 17th we will be holding one of our periodic Community Conversations as we discuss next year's proposed budget.

For 75 years, Temple Emanuel has been an important part of many people's lives. I'm so glad that you are among the people making our community vibrant today and helping ensure our success tomorrow.

Temple Emanuel's Annual Meeting

Friday, May 8, 2026

Dinner starts at

5:45 PM

Meeting starts at

6:00 PM

Temple Emanuel's Virtual Suggestion Box



Scan the QR code below to leave your feedback for Temple Emanuel staff and leadership:



COMMUNITY CONVERSATION SUNDAY, MAY 17

4:00 PM

*Join us for a Community Conversation
about Temple Emanuel's Budget*

Join Temple Emanuel Board Treasurer Steve Del for a Community Conversation about Temple Emanuel's Annual Budget.



Early Childhood Development Center



A MESSAGE FROM KATE LOUIK ECDC DIRECTOR

Our five core values are present every day at Temple Emanuel's ECDC. We practice welcoming, respect, and sharing as we learn and play in our classrooms. We celebrate the joy of learning by exploring the topics that spark our learners' curiosity and creativity. Most importantly, we instill in our young people an appreciation that

they are part of a kehilah, a strong and vibrant community. Our students know that they can trust their teachers to guide and help them, and that they will be loved and celebrated for who they are because our differences make our community strong. These core values are at the heart of ECDC and it is delightful to see our children embrace them as they grow.

Registration for School Year 2026-2027 is open with a few spots remaining. Are you or someone you know interested in joining our ECDC family? I'd love to talk more!

Email klouik@templemanuelpgh.org or call 412-279-7687.



Two classrooms gathered together for a story time to mark World Down Syndrome Day. The classes were joined by two parents who served as guest readers—a wonderful opportunity to practice welcoming guests (*Hachnasat Orchim*)!



In a Threes class, the children worked to create their own wipeable number books which they can use again and again to practice their number writing—the joy of learning (*Simchat Limud*)!



Sharing and turn taking are practiced daily throughout the school. Developing these skills helps the children to understand the value of sharing with others (*Tzedakah*)!



Our Transition class worked together to create an amazing mural reflective of their ongoing studies of outer space. When we work in community (*Kehilah*), we can create beautiful and meaningful works of art!



Torah Center

A MESSAGE FROM STEPH MCFERRON TORAH CENTER DIRECTOR

Community doesn't just happen - sometimes it looks like kids choosing to stay a little longer.

Across our programs, we remain grounded in strong educational goals while intentionally creating space for something just as meaningful: connection. We're also carving out classroom time on purpose - for conversation, collaboration, and shared experiences. Whether students are exploring Israel through art or our teens are stepping up to lead an all-program Color Wars, these moments aren't extras: they're essential.

Throughout the year, a group of students have repeatedly chosen to stay beyond midweek classes, showing up as our first "Leadership Squad" and helping build community from the inside out.

At the same time, our Kids of Steel program continues to bring together students from Pre-K through 7th grade alongside local high school cross country runners who show up week after week to support, encourage, and run alongside them.

Big and small, these moments of intentionality shape what we hope not only brings us together — but keeps us together.

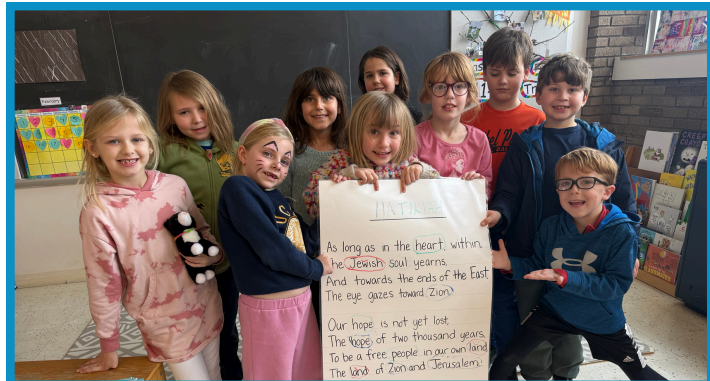
“Big and small, these moments of intentionality shape what we hope not only brings us together — but keeps us together.”



Madrichim before Color Wars



Leadership Squad preparing to speak at Boker Or about their event



1st graders collaborate on meaning of Hatikvah



Kids of Steel on their first day of outdoor practice

APRIL PROGRAMMING AT TEMPLE EMANUEL

Annual 2nd Night of Passover Seder

Thursday, April 2, 6:00 PM

We are excited to welcome those who RSVP'd for our Annual 2nd Night of Passover Seder. Happy Passover!

Crafting Kulanu

Wednesday, April 8, 6:00-9:00 PM

Monday, April 20, 6:00-9:00 PM

Bring a craft to work on in community and join the Crafting Kulanu for *kehilah*, snacks, and time to work on your project! [RSVP Here!](#)



MOTE+ Brews Night

Thursday, April 9, 7:30 PM



Join Rabbi Aaron and the Men+ of Temple Emanuel for pizza and brews at East End Brewing Company's Mt. Lebanon Taproom to enjoy chametz again after Passover! [Email Sarah Mangan](#) to RSVP at smangan@templeemanuelpgh.org.

KIDdish Club

Friday, April 10, 5:30 PM

Join us for our monthly Shabbat service for families with children 0-6 years old! Email [Rabbi Emily Meyer](#) to learn more and RSVP.

Adult Hebrew Class

Sunday, April 12, 1:00 PM

Sunday, April 19, 1:00 PM

Sunday, April 26, 1:00 PM



Our Adult Hebrew course has begun! For those who signed up, we look forward to seeing you in the library on these dates in April.

Women's Wellspring Kulanu

Thursday, April 16, 8:00 PM

Moms of the Temple Emanuel community are invited to gather in a calm and cozy space to share, learn and grow in an after-bedtime Torah Study, reflection, and community-building Kulanu. Music, ritual, and exploration of ancient wisdom will leave us feeling uplifted, enlivened and supported by community. [Email Sarah Mangan](#) to learn more and RSVP.

TERMS Meeting

Friday, April 17, 10:00 AM

Join the Temple Emanuel Retirees in Mitzvah Service for their monthly meeting. [Email Alan Schorr](#) to learn more!

Play Mahj!

Sunday, April 19, 2:00 PM

Join in for table games of Mahjong! [RSVP to Sarah.](#)



Team Sandwich:

Tuesday, April 21, 1:00 PM

Join us to address food insecurity in the Pittsburgh region by making and donating sandwiches every third Tuesday of the month. Drop-off is at 1:00 pm. Email [Susie Hommel](#) to sign up and learn more!



Click here to view the form!

*Plant Sale
Order Forms
Due by Wednesday,
April 22nd*

Shabbat of Service

Saturday, April 25, 10:30 AM

Join Cantor Kalix to make sandwiches for Team Sandwich. [RSVP Here!](#)

Abraham's Table

Monday, April 27, 6:30 PM

Together with the St. Paul's Episcopal Church and Turkish Cultural Center communities, we are excited to once again convene around Abraham's Table.

We will share in a delicious meal, even better company, and a brief learning session around our shared values as adherents to the three Abrahamic faith traditions.

Join us at Temple Emanuel. All food will observe Hallal dietary requirements. [Click here to RSVP!](#)

Are you able to volunteer to help with Abraham's Table? [Email Sarah Mangan](#) to express interest!



City-Wide Yom Ha'atzmaut Event

Wednesday, April 29, 4:30-8:15 PM

Celebrate Yom Ha'atzmaut with Israeli heroes-themed crafts and activities before the live community concert performed by internationally acclaimed Israeli band "Project Heroes" at the Squirrel Hill JCC. [Read more!](#)

MAY PROGRAMMING AT TEMPLE EMANUEL

Adult Hebrew Class

Sunday, May 3, 1:00 PM

Our Adult Hebrew course will wrap up on May 3rd. Thank you to those who participated!

Annual Meeting & Farewell to Cantor Kalix

Special Shabbat Dinner & Service

Friday, May 8, 5:45 PM

You're invited to join Temple Emanuel for our Annual Meeting and dinner at 5:45 PM (RSVP required) before a special Shabbat service and oneg celebrating Cantor Kalix Jacobson as they prepare for their next opportunity. [RSVP for dinner here.](#)

An Evening with Dave Rullo

Monday, May 11

Save the date for an evening with author and congregant Dave Rullo. More details to come!

KIDdish Club

Friday, May 15, 5:30 PM

Join us for our monthly Shabbat service for families with children 0-6 years old! Email [Rabbi Emily Meyer](#) to learn more and RSVP.

SHIM 5K Walk/Run

Sunday, May 17, 10:00 AM-12:00 PM

Join us for Temple's Annual Walk/Run to benefit SHIM at the Jefferson Middle School track. We welcome walkers and runners of all ages (Temple members & non-members) for this non-competitive event. Whether you walk a mile or run a 5K (3.1 miles), 100% of your registration fee benefits SHIM! Travelin' Tom's Coffee Truck will be on hand with your favorite caffeinated brew post run/walk and is also donating back a portion of their proceeds to SHIM too!

\$18/person; \$54 family max. Please bring non-perishable food donations for SHIM as well. [Click here to register!](#)

Community Conversation: Annual Budget

Sunday, May 17, 4:00 PM

Join Temple Emanuel Board Treasurer Steve Del to learn more about Temple's annual budget.

Battle of the Books

Sunday, May 17, Kids at 5:00 PM, Adults at 7:00 PM

Battle of the Books is a friendly, team-based reading competition. Join a team and compete or volunteer to make the event a success! A pizza dinner will be available from 6:30-7:00. [Email Rabbi Emily Meyer](#) to learn more and sign up!



WTE+ Book Club

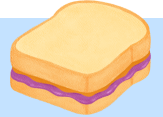
Monday, May 18, 7:30 PM

Join WTE+ *offsite* for Book Club! We will discuss the novel *Good Grief* by Sara Goodman Confino. [RSVP required](#) for location!

Team Sandwich:

Tuesday, May 19, 1:00 PM

Join us to address food insecurity in the Pittsburgh region by making and donating sandwiches every third Tuesday of the month. Drop-off is at 1:00 pm. Email [Susie Hommel](#) to sign up!



Shofar School with Rabbi Aaron

Wednesday, May 20, 6:30 PM

Learn how to blow the Shofar or come to practice your skills with Rabbi Aaron Meyer! [RSVPs appreciated.](#)

Grief Group

Thursday, May 19, 10:00 AM

Participants are invited to join the group in person at Temple Emanuel or [via Zoom](#).



South Hills Tikkun Leil Shavuot

Thursday, May 21, 7:00 PM

Save the date to join the community's virtual Torah study session with your South Hills clergy for Shavuot!

Play Mahj!

Sunday, May 24, 10:30 AM

Join in for table games of Mahjong! [RSVP to Sarah.](#)

Memorial Day Bagel Brunch

Monday, May 27th from 10:00 AM to 12:00 PM

Join us for our annual Memorial Day Bagel Brunch at **McLaughlin Run Road Activity Center** for bagels, refreshments, and yard games! [Click Here to RSVP!](#)

75th Anniversary Cheesecake &

Cappuccino Celebration

Sunday, May 31, 2:00-4:00 PM

Join the Temple Emanuel community in celebration of 75 years! A cappuccino cart and cheesecake bar will be provided and memories will be shared as we kick off Temple's 75th year! *More details to come.*

JUNE PROGRAMMING AT TEMPLE EMANUEL



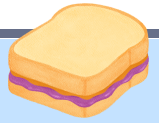
JUNE 8-12
9:00 AM - 3:00 PM

CAMPERS
ENTERING 1ST -
7TH GRADES

Camp Shalom AT TEMPLE EMANUEL



make your own hummus, learn to order ice cream in Hebrew, make Safed candles, design Hebrew jewelry, snorkel through Eilat, build a Jerusalem history layer cake, etc...



Team Sandwich:

Tuesday, June 16, 1:00 PM

Join us to address food insecurity in the Pittsburgh region by making and donating sandwiches every third Tuesday of the month. Drop-off is at 1:00 pm.

Email [Susie Hommel](#) to sign up and learn more!

Interfaith Pride Service

Save the date: Saturday, June 6, 2026

Save the date for our South Hills Interfaith Pride Service! More details to come!

Grief Group

Thursday, June 11, 10:00 AM

Participants are invited to join the group in person at Temple Emanuel or [via Zoom](#).



TERMS Meeting

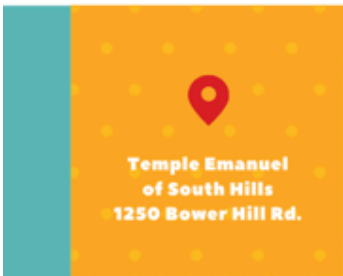
Friday, June 19, 10:00 AM

Join the Temple Emanuel Retirees in Mitzvah Service for their monthly meeting. [Email Alan Schorr](#) to learn more!

Play Mahj!

Sunday, June 28, 10:30 AM

Join in for table games of Mahjong! [RSVP to Sarah](#).



Temple Emanuel
of South Hills
1250 Bower Hill Rd.



create
explore
learn
connect
with Israel

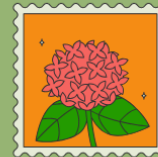
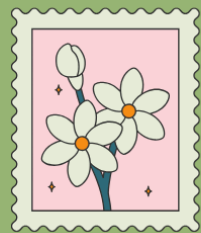


Camper Registration **\$200**

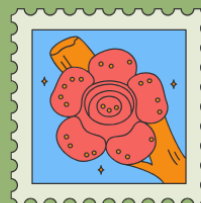
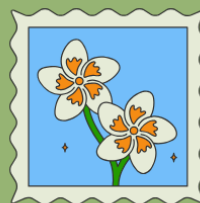
Stay up-to-date with what's going on at Temple Emanuel with our weekly Temple Happenings emails and our website calendar.



VOLUNTEER IN TEMPLE'S GARDENS!



We need volunteers to help keep our gardens thriving throughout the summer!



Whether you want to give back in a meaningful way, need volunteer hours for school, or want a mitzvah project to do with your family, we can use your help!

To volunteer, email Sarah at smangan@templeemanuelpgh.org

Thank you to the donors who help sustain Temple Emanuel through contributions to our various funds!

Donations to Temple Funds as of March 20, 2026

Cantor Jacobson Discretionary Fund

| Donor | In Honor |
|--------------|--|
| Marc Aronson | In appreciation of Cantor Kalix Jacobson |

Capital Campaign

| Donor | In Honor |
|--|--|
| Kate & Max Louik Leslie & David Hoffman | Donation Birth of Barbara & Bryan Rosenberger's granddaughter |
| Leslie & David Hoffman | Get well wishes for Bryan Rosenberger |

| Donor | In Memory |
|----------------------|-----------------|
| Eileen & Mark Sappir | Paul Jacobowitz |

Brenda & Larry Miller Memorial Caring Community

| Donor | In Honor |
|--|--|
| Joan & Ron Rothaus | Birth of Tate Richard Snodgrass, Ellie Bahm's Great Grandson |
| Laryn & Moe Finder | In appreciation of Bonnie Benhayon |
| Laryn & Moe Finder Susan & Richard Hommel | In appreciation of Amy Pardo Birth of Tate Richard Snodgrass, Ellie Bahm's Great Grandson |

| Donor | In Memory |
|---|--|
| Amy & Andrew Zahalsky Barbara & Milton Wolf Joan & Ron Rothaus Roz & Farrel Levine Susan & Richard Hommel Susan & Richard Hommel Susan & Richard Hommel Susan & Richard Hommel | Sam Levine Sam Levine Jonathan Bahm Ken Kantrowitz Ernest Hommel Helene Abrams Marion Louise Hommel Marty Silverman |

Cemetery Beautification Fund

| Donor | In Memory |
|--|--|
| Anne Watzman Anne Watzman Georgia Kent Georgia Kent Laurey Simkin Silverman & Steve Silverman Laurey Simkin Silverman & Steve Silverman Linda Smiga Marcia Grupp Marlene Naft Marlene Naft Nancy Weissman Selma Furst | Rebecca Watzman Lea S. Teplitz Eva Rose Kent Harry J. Kent Sophie Auerbach Samuel Simkin Irma Berkowitz Anita & Edward Grupp Morris Naft Sorrell R. Naft Joseph H. Field Samuel Fishman |

Cemetery Beautification Fund (continued)

| Donor | In Memory |
|---|---|
| Shelley Cohn Shelley & Howie Miller Sidney Metzger Sidney Metzger Veronica & Jon Schmerling | Leonard Cohn Brenda C. Miller Arlene Metzger Selma Abrahams Kaplan Elizabeth Lowy |

Diskin Music Fund

| Donor | In Memory |
|--------------------|-------------|
| Joan & Ron Rothaus | Janet Rubin |

General Fund

| Donor | In Honor |
|---|--|
| Amy & Tony Pardo Elaine & Alan London | Birth of Owen Kindler Birth of Tate Richard Snodgrass, grandson of Lynn & Carl Bahm & great grandson of Ellie Bahm Birth of Caroline Parker Davidson, first grandchild of Laura & Brian Davidson |
| Ellie Bahm | Good Wishes to Ed Friedman Good Wishes to Sandy Golomb Birth of Elisia & Chuck Silverstein's grandson, Luka Birth of Lynn & Carl Bahm's grandson, Tate |
| Laryn & Moe Finder Laryn & Moe Finder Marcy Bernson | James Genstein & Family Donation With gratitude to Fran Landay for the Hamantaschen & good wishes to the Landay Family Birth of Lyla Paige Silberstein Ted Goldberg's 80th Birthday Speedy recovery for Bryan Rosenberger |
| Marcy Bernson | |
| Mark Perilman Paul Raff Rabbi Mark & Alice Mahler | |
| Robin & Steve Hausman Rosalie & Louis Anstandig Wendy & Steve Denenberg | |

| Donor | In Memory |
|--|--|
| Amy & Andrew Zahalsky Amy & Andrew Zahalsky Amy & Andrew Zahalsky Amy & Steve Rock Anastasia & Matthew Abramson Andrea & Jeff Fitting Barbara & Lee Feldman Barbara & Lee Feldman Beth & Matt Schwartz Carol & Marc Wolkoff Carol & Marc Wolkoff Cindy & Jack Bouer Cindy & Jack Bouer Cindy & Jack Bouer Cindy & Jack Bouer | Susan Eisinger Cynthia Noe Kenneth Kantrowitz Fred M. Rock Klara Gavrilova Lilly Ferenci Susan Eisinger John Norman Miksic Roberta Levinthal Mallin Sam Levine David Joel Pober Janice Keilly Robert Joseph Keilly Edith Bouer Raymond Bouer |

General Fund (continued)

| Donor | In Memory |
|-------------------------------------|----------------------------|
| Diane Eger | Emily Levy Davis |
| Elaine Goldblum | Meyer Feinberg |
| Eric Gomberg | Max Gomberg |
| Heidi Russman | Bernard Rodney |
| Irene Luchinsky & Allen Beitman | Sam Levine |
| Iris & Chris Harlan | Sam Levine |
| Karen & Tony Captline | Ann Snyder |
| Leslie & David Hoffman | Faye Lichtenstein |
| Linda & Paul Richardson | Sylvia Richardson |
| Lorraine Capozzi & Joseph Hubert | Dan Garfinkel |
| Marcia K. Feinberg & Louis R. Klein | Bernard H. Klein |
| Marcy Bernson | Minnie Benovitz |
| Meg & Keith Abrams | Helene Abrams |
| Nancy & Bill Berkowitz | Ethel Hillman Driben |
| Nancy & Bill Berkowitz | Harriet Kruman |
| Nancy & Will Joseph | Sam Levine |
| Noel & Sam Bliman | Ida Bliman |
| Noel & Sam Bliman | Dexter W. Haven |
| Rita Cobbett | Harriet Kruman |
| Robin & Steve Hausman | Carol Schneider |
| Ronna & Jeffrey Robinson | Florence Robinson |
| Rosalie & Louis Anstandig | Harriet Anstandig Tyrnauer |
| Rosalie & Louis Anstandig | Esther Florence Anstandig |
| Rosalie & Louis Anstandig | Benjamin Mayer |
| Ruth Novice | Dave Giusti |
| Ruth Novice | Herbert Novice |
| Sandra & Arnold Ruben | Harry Ruben |
| Sandra & Jeffrey Solomon | Isaac Solomon |
| Sandra Herman | Susan Shapiro |
| Sylvia Feinberg | Meyer Feinberg |
| Temple Board | Brad Langerman |
| Temple Board | Klara Gavrilova |
| Temple Board | David Joel Pober |
| Temple Board | Carol Schneider |
| Temple Board | Janet Rubin |
| Temple Board | Sheldon S. Abramovitz |
| Temple Board | John Norman Miksic |
| Temple Board | Harriet N. Kruman |
| Temple Board | Thomas Kohn |
| Temple Board | Margery Morgenstern |
| Temple Board | Faye Lichtenstein |
| Temple Board | Roberta Levinthal Mallin |
| Wendy Freed & Family | Isadore Rotman |
| Wendy Freed & Family | Louis Freed |

Holocaust Memorial Garden Fund

| Donor | In Memory |
|-----------------------|-----------------------|
| Amy & Tony Pardo | Janet Rubin |
| Carol & Jon Adler | Janet Rubin |
| Carol & Marc Wolkoff | Janet Rubin |
| Howard Friedman | Janet Rubin |
| Linda Scott | Janet Rubin |
| Lori & Steve Blattner | Janet Rubin |
| Lynn & Harvey Rubin | Frances F. Levin |
| Nancy & Will Joseph | Janet Rubin |
| Peggy & Lou Gold | Miriam (Marlene) Gold |
| Rita Cobbett | Janet Rubin |
| Robin & Steve Hausman | Janet Rubin |
| Wanda Goodman | Janet Rubin |

Martha Klein Lottman Family Fund

| Donor | In Honor |
|---------------------------|---------------------------------|
| Betty Jo & Howard Louik | Ted Goldberg's special birthday |
| Betty Jo & Howard Louik | Ron Rothaus's special birthday |
| Randi & Nicholas Rumbaugh | Donation |

Nan Simon ECDC Fund

| Donor | In Memory |
|--|--------------------|
| Nan & Jeff Simon | Sam Levine |
| Nan & Jeff Simon | Ken Kantrowitz |
| Nan & Jeff Simon | Jerry Rosenfeld |
| Nan & Jeff Simon | Irene Kishter |
| Nan & Jeff Simon | Ruben Leibovitz |
| Nan & Jeff Simon | David Joel Pober |
| Nan & Jeff Simon and Jennifer S. Angeletti | Ruthie Spatz |
| Peggy & Louis Gold | Jane Colavincenzo |
| Pamela Handelman | Tovah Joy Bernfeld |
| Sandy & Lee Golomb | Ken Kantrowitz |
| Sandy & Lee Golomb | Pearl M. Golomb |

Rabbi Meyer's Discretionary Fund

| Donor | In Honor |
|-----------------------|---|
| Bunny & Alan Schorr | In appreciation of Rabbi Aaron Meyer |
| Debra & Ron Schneider | In appreciation of Rabbi Aaron Meyer |
| Holly & Bruce Rudoy | In appreciation of Rabbi Meyer's kindness to our family |
| Laura Sucher | With Gratitude for Rabbi Meyer's class |
| Paula & Bob Spock | In appreciation of Rabbi Aaron Meyer |
| Roz & Ed Friedman | In appreciation of Rabbi Aaron Meyer |

| Donor | In Memory |
|--------------------------|--------------------------|
| Anatilie Seewald | Dr. Marvin Kirchner |
| Beth & Charles Levinthal | Roberta Levinthal Mallin |
| Beth & Charles Levinthal | Morton Mallin |
| Judy Nesvisky | Jerry Bitner |
| Meg & Keith Abrams | Helene Abrams |
| Naomi & Howard Pittle | Harry Ruben |
| Roz & Ed Friedman | Betty Friedman |
| Roz & Ed Friedman | Charles Friedman |
| Selma Furst | Abraham Furst |
| Selma Furst | Gertrude Fishman Mark |
| Selma Furst | Rafael Furst |
| Shelley Roteman Orrill | Gilbert L. Roteman |

Rabbi William Sajowitz Endowment Fund

| Donor | In Memory |
|---------------|-----------------------|
| Marcy Shaffer | Ceil & Milton Shaffer |

Louise "Sissie" Sperling Endowment Fund

| Donor | In Memory |
|-----------|-----------|
| Anonymous | Donation |

Yahrzeit Remembrance Fund

| Donor | In Memory |
|---------------------------------|-----------------------|
| Anita Markowitz | Louis Markowitz |
| Anita Markowitz | Charles Pollak |
| Anne & Thomas Blank | Arthur Blank |
| Annette Resnick | Edward Resnick |
| Annette Resnick | Marc Resnick |
| Betty Jo & Howard Louik | Dean J. Hirschfield |
| Betty Jo & Howard Louik | Samuel Hirschfield |
| Carol & Ted Goldberg | Dean J. Hirschfield |
| Caroline & Erik Naft | Sorrell R. Naft |
| Cheryl & Howard Baskin | Sidney Brown |
| Debra & Ron Schneider | Donation |
| Diane & Arnold Eger | Fern Taksa Eger |
| Gary Schwager | Steven Schwager |
| Jacqueline Bialosky | Jerome Bialosky |
| Janice & Teddy Seidenfeld | Nat Greenberg |
| Joy Meyer | Donation |
| Laryn & Moses Finder | Leon Sax |
| Marilyn & Charles Spirer | Helen Spirer |
| Miriam & Tim Blanke | Milton David Schwartz |
| Miriam Breslow | Aaron Canter |
| Miriam Breslow | Arnold Breslow |
| Nancy Yoest | Lori Ann Sachs |
| Phyllis & Bob Henderson | Victoria Henderson |
| Ronna & Jeffrey Robinson | Alfred Robinson |
| Sally Lebowitz & Family | Milton Lebowitz |
| Sally Lebowitz & Family | Dora Tex Eisenstat |
| Shelley Berman | Helen Cassler |
| Sherri & Todd Jaffee | Kenneth Blinn |
| Sherri & Todd Jaffee | Danny Jaffee |
| Sherri & Todd Jaffee | Sharon Jaffee |
| Susan Schechter Lipsitz | Samuel Schechter |
| Susie & Steve Silbermann | Harold Kay |
| Susie & Steve Silbermann | Selma Kay |
| Teddy Seidenfeld | Anne Seidenfeld |
| Terri Greenberg & Randy Frankel | Judith Hoffman |

Yahrzeit Plaques

| Donor | In Memory |
|--------------------------|-----------------------|
| Alicia Kozel | Vicente Garcia |
| Anita Gold | Harold A. Gold |
| Anita Gold | Beatrice Carpe |
| Cara & Jeremy Snyder | Martha Peritz |
| Cara & Jeremy Snyder | Henry Hans Peritz |
| Debra Rasmussen | Desi Arbib Rasmussen |
| Kathryn & Jeffrey Simons | Prescott Warren May |
| Roz & Farrel Levine | Samuel Matthew Levine |

Zolot Israel Adult Scholarship Fund

| Donor | In Memory |
|------------------|-------------|
| Rita & Stu Zolot | Pearl Zolot |

To make a charitable donation, visit our [Donations page here.](#)

To learn more about these funds, visit our [Funds page here.](#)

Thank you!

Circles of Giving

To offer Temple's current level of programming, pastoral care, and leadership within the Jewish community costs about \$1,800 per affiliated adult. Contributions at or above one of our Circle of Giving levels make it possible for everyone, regardless of their financial circumstances, to learn in our ECDC, Torah Center, and Adult Education communities, to celebrate Shabbat and holidays in sacred community, and to embrace the wisdom of Jewish tradition together with the blessings of Jewish community and connection. Our Circles of Giving program allows us to make visible the shared investment that keeps Temple thriving for generations to come while also showing gratitude for program participants' considerable generosity.

Alef Circle

(tax-deductible giving at or above \$3,600)

- Recognition in Temple's bulletins, High Holy Day Magazine, and at a special Oneg Shabbat;
- Inclusion in Temple's New Year Greetings and Book of Remembrance;
- A Chanukah Dinner reservation for your immediate family (if made by the deadline);
- Two reservations for the 2nd Night Seder (if made by the deadline).

Bet Circle

(tax-deductible giving at or above \$5,000)

- All of the recognition from the Alef Circle, plus:
- A personal invitation to join us for the summertime Cheer on the Pirates afternoon

Gimel Circle

(tax-deductible giving at or above \$6,500)

- All of the recognition from the Bet Circle, plus:
- A personal invitation to join us for the Penguins Jewish Heritage night or the summertime Cheer on the Pirates afternoon

Dalet Circle

(tax-deductible giving at or above \$8,000)

- All of the recognition from the Gimel Circle, plus:
- Two additional reservations for the 2nd Night Seder (if made by the deadline);
- A personal invitation to join us for the Penguins Jewish Heritage night or the summertime Cheer on the Pirates afternoon;
- A personalized engraving on Temple's donation recognition display.

Benefits of the Temple Emanuel giving circles extend twelve months from the calendar month in which the total tax-deductible donation of a member account meets participation level. Circle members will receive advanced reminders of member benefit opportunities, but benefits must be claimed by the participation deadline to take advantage. If a member increases giving to reach a new circle level within the twelve-month period of current circle participation, the benefit period will reset at the higher level and extend for an additional twelve months. If you are willing and able to participate, please contact Rebecca Closson at rclosson@templeemanuelpgh.org.



CONTACT US



412-279-7600



TempleEmanuel@TempleEmanuelPGH.org



1250 Bower Hill Road
Pittsburgh, PA 15243



[Follow us on Facebook!](#)



[Follow us on YouTube!](#)



[Follow us on Instagram!](#)

We are here for you!

Please stop by or reach out via phone or email.

Our office is open:
Monday – Thursday, 9AM-2PM
Friday, 9AM-Noon

Rabbi Aaron Meyer

ameyer@templeemanuelpgh.org

Cantor Kalix Jacobson

kjacobson@templeemanuelpgh.org

ECDC Director & Temple Senior Director
Kate Louik

klouik@templeemanuelpgh.org

Torah Center Director & Event Coordinator
Steph McFerron

smcferron@templeemanuelpgh.org

Lifelong Learning Coordinator

Rabbi Emily Meyer

emeyer@templeemanuelpgh.org

Programming & Communications Director
Sarah Mangan

smangan@templeemanuelpgh.org

Finance & Development Director
Rebecca Closson

rclosson@templeemanuelpgh.org

Office Manager

Lori Blattner

lblattner@templeemanuelpgh.org

Operations and Technology Coordinator
Ellen Drook

edrook@templeemanuelpgh.org

Temple's Board President

Beth Schwartz

president@templeemanuelpgh.org

TEMPLE EMANUEL