

FALL 2024



INSIDE ISSUE

- [Worship Schedule](#)
- [Temple Family Mentschenings](#)
- [A Message from Rabbi Meyer](#)
- [A Message from Cantor Jacobson](#)
- [A Message from Temple's Board President, Beth Schwartz](#)
- [ECDC Update](#)
- [Torah Center Update](#)
- [Strategic Plan Updates](#)
- [Fall Programming](#)
- [Donations](#)
- [Contact Us](#)



Shape the Future of Temple

Vote on the Bylaws Change

Sunday, October 27th at 12:00

PM

The Temple Emanuel Board of Trustees invites all Temple members on October 27th at noon for a Special Congregational Meeting to vote on our new future-forward bylaws.





T'Filah

WORSHIP & TORAH STUDY SCHEDULE

Friday Afternoon Torah Study at 1:00pm

Join Rabbi Meyer for a 45-minute discussion of Proverbs, the wisdom literature of Jewish tradition, on Zoom by clicking [here](#).

Shabbat Evening Services – Fridays at 7:00pm

Join us for our Shabbat evening services in the Beit HaT'filah. You can also continue to connect with us via Temple's website, Facebook, or YouTube. An electronic copy of Mishkan T'filah, the congregation's prayer book, can be accessed [here](#). Immediately following the service, enjoy a nosh at the oneg and schmooze with fellow congregants!

Shabbat Mornings

8:00am Our Shabbat morning videos will be released on [Facebook](#) and [YouTube](#). One will include a traditional Aliyah from our Sefer Torah in Hebrew and translation, and the second a brief exposition of how the themes and lessons of the *parasha* (portion) relate to our modern lives.

Shabbat Morning Torah Study – Saturdays at 9:00am

Join Rabbi Meyer or Cantor Jacobson in person at Temple or on [Zoom](#) to discuss the weekly *parasha*.

Havdalah – Saturdays at 8:00pm

Join us virtually on Temple's [Facebook page](#).

Lay-Led Morning Minyan – Sundays at 9:30am

In person in the Beit HaT'filah or click [here](#) to join virtually on Zoom.

Shabbat Evening Services Fridays at 7:00 PM

October 18
Shabbat Sukkot

October 25
**Kindergarten
Consecration**

November 8
**TERMS Shabbat in
Honor of Veterans**

December 6
**First Grade Class
Service**

December 20
Class of 2024 Service

B'nei Mitzvah Services Saturdays at 10:30 AM

November 16
Evan Giliberto

December 14
Owen Hepps

TEMPLE FAMILY MENSCHENINGS

as of September 13, 2024

SHALOM!

A warm welcome goes to new (and returning)
members of our Temple family:

- **Rebecca Rosengard & Jennfer Robinson & their children, Hazel & Jack Rosengard**
- **Rebecca & Tep Tsai & their children, Corbin & Lily Tsai**
- **Joelle & Philip Klein & their children, Leila & Callie Klein**
- **Joseph Ligier & Anna Pasyuk & their children, Audrey, Donovan, Maxwell & Soleia**
- **Daniel & Kate Kleinbaum & their children, Amelia & Levi & Quinn**
- **Alex Gordon**
- **Michelle Bonnar**
- **Annie & Rich Kamrin & their children, Ezra & Oren**
- **Courtney & Grant Abrams & their children, Jacob & Kinsley**
- **Bianca & Greg Sloan & their son, Tyler Sloan**
- **Emily & Jim Sabol & their son, Norah**
- **Stephanie & Jonathan Libbon & their children, Leah & Noah**
- **Jennifer & Nik Levitan & their daughter, Lexie**

Births

Mazal Tov!

- **Eli David Sparkman**, grandson of Robin & Steve Hausman, son of Estee & Steven Sparkman, brother of AJ Sparkman (July 20)
- **Ezra William Margolis**, son of Lars Margolis & Lauren Krevet, brother of Leo and Taavi Margolis (July 25)
- **Ezra Phillip Farber**, son of Courtney Voss & Jacob Farber, brother of Ben & Jonah Farber (August 15)

We Mourn the Loss of:

- **Sylvan Holzer**, father of Jodie (Jarrod) Shaw, grandfather of Tyler & Emily Shaw (June 16)
- **John Wisler**, brother of Maria Margolis, uncle of Naomi, Ben & El Margolis (June 22)
- **Rabbi Fred Pomerantz**, brother of Debbie (Ken) Cook, uncle of Rachel & Brent Cook, (July 8) Debbie (Ken) Cook, uncle of Rachel & Brent Cook (July 8)
- **Anita McNabb**, niece of Ruben Abramovitz (July 6)
- **Thomas Hollander**, long-time Temple Member (July 10)
- **Melvin Bleiberg**, Temple member (July 18)
- **Israel Kleiner**, father of Ron Kleiner, and grandfather of Jordana & Elise Kleiner (August 5)
- **Irvin Beck**, Temple member & husband of Marilyn Beck, father of William Beck, Stephen Beck, Kenneth (Tara) Beck & Randi (Martin) Whaley, grandfather of Melissa Rush (August 26)

B'nei Mitzvah

- **Evan Giliberto**, son of Sarah and Phillip Giliberto will become a Bar Mitzvah on Saturday, November 16.
- **Owen Hepps**, son of Terri and David Hepps will become a Bar Mitzvah on Saturday, December 14.

Engagements

Mazel tov to Zachary Bahm on his engagement to Alexa Ana Mazur!



A MESSAGE FROM RABBI AARON MEYER

In Pirkei Avot 5:17, a section of the Jewish text known as the Mishnah dating back to the 2nd Century CE, we read wisdom as relevant for today as for the day it was written:

“Every dispute that is for the sake of Heaven will, in the end, endure; but one not for the sake of Heaven will not endure. Which is the controversy that is for the sake of Heaven? Such was the controversy of Hillel and Shammai. And which is the controversy that is not for the sake of Heaven? Such was the controversy of Korah and all his congregation.”

In a world marred by division and divisiveness, where our inclination to civility — let alone mutual responsibility — has fractured along lines of political party, generation, socioeconomic status, and identity awareness to name but a few, we are engaged in endless societal and personal disputes and arguments. Distinguishing between which disagreements bring us closer to shared society and which tear us further apart feels more important than ever. How might we be more like Hillel and Shammai than Korach? Let’s take a closer look at both disputes.

Hillel and Shammai frequently disagreed over the correct interpretation of Jewish tradition. Should conversion to Jewish tradition be maximalist or minimalist in terms of study? Should we start with one candle in the Chanukah menorah and build to eight or start with eight and decrease to one? On what day should we celebrate the new year for the trees, now known as Tu B’shevat? In what position should your body be when reciting the Shema? More than 300 disagreements are recorded between the Schools of Hillel and Shammai — they never stopped arguing — yet we are told their disagreements were for the sake of Heaven, meaning they were worthwhile, earnest, life-sustaining disagreements. How could this be? Talmud teaches that their intentions were pure as was their style of dispute: the Divine Voice ruled in favor of Hillel’s arguments because the students of Hillel were taught both Hillel’s and Shammai’s opinions. Imagine caring enough about the person with whom you disagree to evaluate, internalize, and be able to present their argument as on equal footing with your own!

Korach, on the other hand, rose in direct and open rebellion against Moses and his brother Aaron. “You have gone too far! All of the community is holy: who are you to tell us what to do?” the text of Numbers 16 tells us. Together with his followers, Korach sought power and self-aggrandizement through confrontation. It didn’t go well for him — the text says the earth swallowed them whole —because his motivation was wrong regardless of the merits of his claim. How often do we fall into the same trap, argue for the sake of self-righteousness and being “right” long after it has become clear that we will not change the hearts and minds of our discussion partners?

Dr. Joshua Kulp, the head of the Conservative Yeshiva in Jerusalem, writes: “In Judaism, debate is legitimate. Indeed Jews are famed worldwide for being an argumentative people, and this is considered (at least by most Jews themselves) a positive attribute. What is problematic is not debate itself, but debate that does not attempt to reveal the truth, and especially God’s truth. Debate that is only self-serving, an attempt to be victorious over the other side is considered to be illegitimate.”

As we navigate the complexities of our modern world, may we strive to engage in debates not for the sake of personal victory, but for the pursuit of truth, understanding, and a shared vision for a better society, just as Hillel and Shammai did. It’s significantly more difficult, as it puts the importance of relationship above ideology, but it’s the only way for the sake of Heaven.



A MESSAGE FROM CANTOR KALIX JACOBSON

In the aftermath of a brutal year, the last thing likely on our minds is hope. It may feel distant, like a sentiment held in a past life. I know this because I have been there with you every step of the way in 5784. It feels as though the Jewish people have been dealt blow after blow this year. This upcoming High Holy Day season and the commemorations of October 7th and October 27th will likely feel raw and painful. The liturgy may challenge us. Anniversaries may bring tears. However, I want to posit an option of choosing hope. Hope in the wake of despair is a radical choice, and it is one that has propelled the Jewish people forward since the beginning of our tribe.

This is not the first and will not be the last time the Jews will need to be resilient in the face of adversity. How many times in our past have we persevered—through the destruction of the temples, the Crusades, the Spanish Inquisition, the Holocaust, and in more recent years, tragedies such as Tree of Life and October 7th. This is not to say that we should not acknowledge our sorrow—remembering, too, is of critical importance. And yet by choosing joy and hope, we acknowledge our roots and tradition. By reserving our emotions only to sorrow and despair, we are ruminating in what was. By allowing ourselves to feel joy and hope, we are looking forward to what lies ahead in life. And indeed, we are commanded to do so. Deuteronomy 30 verse 19 tells us that G-d has put before us life and death, blessing and curse. G-d tells us to choose life. What is life if not rooted within hope?

In this month of Elul and as we continue to the month of Tishrei and the days of Awe, I invite you to carry hope with you. This is a time of renewal, of return, of reflection. One of the famous components of this time is asking one another for forgiveness. Many also make promises to themselves to do better. This time is a reminder that we believe that change is possible—that we can heal what is broken within us and within the world. We are not beyond repair, and neither is the imperfect world in which we live.

By choosing to hope in this upcoming fall season, we are choosing to commit to Tikkun Olam, to rebuilding and repairing the world. We are choosing to commit to our community, Jewish and otherwise. We are choosing even the simplest of acts: starting each day and putting one foot in front of the other. In a world that can be vicious and cruel, each of these choices are acts of radical hope.

The poem that inspired the Israeli national anthem Hatikvah, Tikvateinu, was written in 1878, just one decade after Austria granted emancipation to its Jews, including Tikvateinu's author, Naftali Herz Imber. The poem begins: "Our hope is not yet lost." I believe that this remains true today. Our hope is not yet lost. My wish for the New Year is that you will join me in this radical choice of hope.



A MESSAGE FROM TEMPLE EMANUEL'S BOARD PRESIDENT, BETH SCHWARTZ

As I write this Bulletin message the days feel like summer while the nights and early morning hours carry the hints of crisp autumn air. This time of year has always felt transitional to me. The relaxed summer days and vacations are fading into memory and the hectic days of the school year are getting into gear. This is also a reflective time of year as we move into the High Holy Days - we reflect back on where we have been and then look forward to where we want to be.

Temple Emanuel is also in a time of transition - although we reached this time, not by turning a calendar page, but through disciplined reflection and future forward planning with our strategic partner Outside Angle. We reflected back on what Temple has been, we considered where we are now, and then we developed a strategic plan to bring us to where we want to be. Our plan was the result of hours of research and deliberative and thoughtful discussions with a variety of iterations that included steering committees, board, staff and congregants.

As exciting as transitions and new beginnings can be, they can also be intimidating, and anxiety provoking. The status quo, even when it isn't working well, is familiar; familiarity is comfortable. Change leads us into the unknown and unfamiliar both of which can be uncomfortable, and even feel scary. Thus when we hear "change", our instinct may be to say "NO, Let's just keep with what we've done." But if we pause, take a breath, and open our minds, our ears, and our eyes to new directions for Temple Emanuel we can likely help Temple thrive into the future. Society all around us is changing, and for Temple Emanuel to remain relevant to the society in which we are immersed we do need to make changes. Yes, change is coming to Temple, change not common in the synagogue world. But change that we firmly believe will keep Temple Emanuel a relevant, strong, and thriving congregation in the years to come.

A lot of you have opened the emails we have sent out about the strategic planning process, some of you have attended our Town Halls, others of you have had individual conversations with staff, board or steering committee members. I encourage everyone to continue to read what we send out (which is also available on the Envisioning Our Future section of our website), come to our Town Hall meetings, dialogue with us, and ask us questions, Then come to our Congregational Meeting on October 27th to vote on the proposed changes so that Temple Emanuel can thrive into the future.

As your own families reflect and transition into fall and the High Holy Day season, I wish you health, peace and happiness.

Any of our Steering Committee members are happy to talk with you about Temple's transition and strategic plan.

President Beth Schwartz
Immediate Past President Michelle Markowitz
Vice President Tony Pardo
Treasurer Steve Del
Trustee Rob Edelson
Senior Rabbi Aaron Meyer
Senior Director Kate Louik

Holidays with Young Children: Making Memories, Making Meaning

Kate Louik, Director, Temple Emanuel Early Childhood Development Center

Do you remember what your house smelled like during the holidays? Can you almost taste your grandmother's matzo ball soup or your great aunt's pumpkin pie? These special times of year offer us unique opportunities to create and continue traditions with even our youngest family members.

While holidays are often a joyful time, they can also be stressful and hectic! Preparing yourself and your family to welcome the holiday is an important first step to celebrating. You might start by considering what is meaningful about the holiday to you. The list might include:

- Worship at synagogue
- Ritual or traditional foods
- Family gatherings
- A lesson or value connected to the holiday

By identifying what is most important to you about the holiday, you will be able to plan your celebrations accordingly. Checking the Temple worship schedule, coordinating logistics with family members, and finding books and activities for young children to engage with might be a part of your preparation for the holidays.

At Temple Emanuel ECDC, our holiday celebrations focus not just on telling stories and eating foods, but also on understanding the lessons and values we can learn from the holidays. During Yom Kippur, we learn how our relationships grow stronger when we're able to say we're sorry. On Sukkot, we learn about the value of Hachnasat Orchim (welcoming guests) as we consider whom we might invite into our Sukkah. Since Chanukah typically involves the giving of gifts, it can be a wonderful time to talk about the Jewish value of Hoda'ah (gratitude).

No matter how your family celebrates, I wish you a happy, healthy, and meaningful holiday season.



TORAH CENTER | UPDATE

From Steph McFerron - *Torah Center Director*

I spent a morning with Torah Center first graders in the SHIM Garden, thinking it would be just a quick photo op. But as I looked around, I was blown away by the magic of the moment. At first glance, it seemed like just another Sunday morning. But as I took a closer look, I saw our community's beauty shining through.

Our amazing teacher, who's also a congregant, was there, along with *madrichim* who sacrificed their Sunday morning sleep (thank you!), and an incredible parent volunteer who lent a hand. And then there was the garden itself, flourishing thanks to the love and care of our community. And let's not forget the kids, beaming with excitement as they got to put their classroom lesson on values into practice. It was a powerful reminder of what it means to live, learn, and lead Judaism together - and it was truly special.

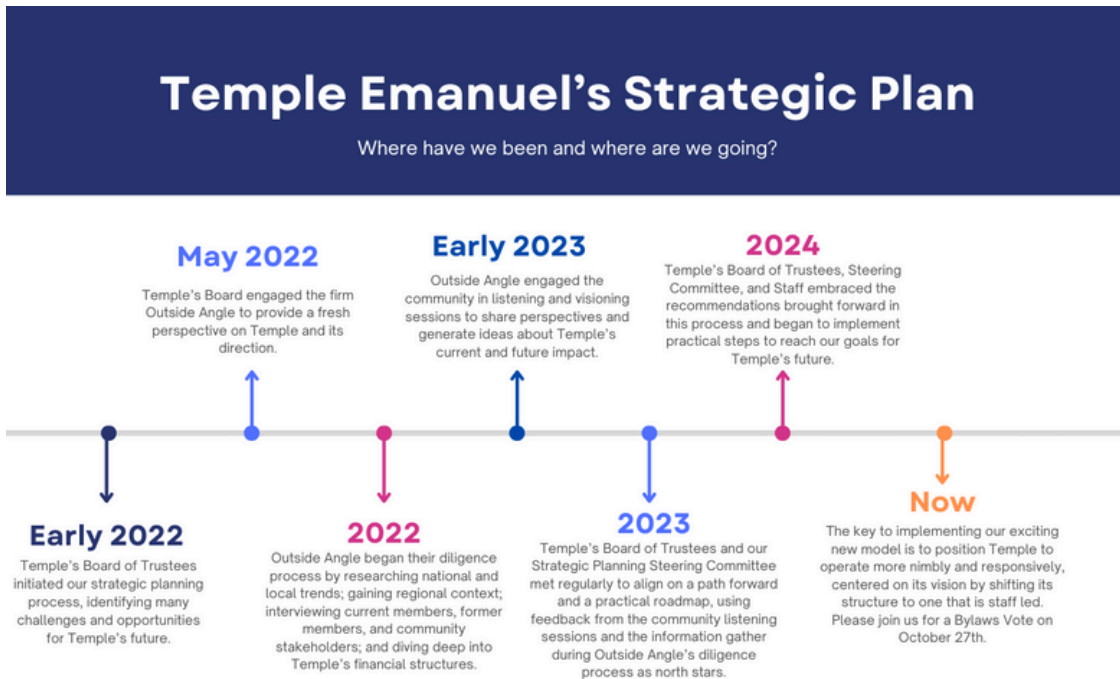
As we kick off the new year, I'm eager to experience more moments like these. In a world that can sometimes feel divided, these reminders of community and connection are more precious than ever. Wishing everyone a new year filled with joy, meaning, and moments that bring us closer together!



STRATEGIC PLAN UPDATES

Overview of Temple Emanuel's Strategic Plan

The shared, immersive process to envision Temple Emanuel's future has been ongoing since 2022. During this exciting time, we've spent (and continue to spend) a great deal of time researching national trends and local demographics, discussing our community's needs and Temple's areas for growth, and analyzing the many opportunities – and challenges! – facing synagogues in general and Temple Emanuel specifically.



Hundreds of individuals and families find value in Temple Emanuel as their Jewish home in the South Hills of Pittsburgh. These wonderful people – representing the diversity of American Jewish life with respect to interfaith family status, race, gender identity, sexuality, ideological diversity, and more – are growing in their diversity of needs and interests and are inviting us to expand our definition of success as a synagogue to match. We believe that Temple has an opportunity to increase engagement in our programs and services by expanding access, both real and perceived, while maintaining the centrality of our Mission and Vision. At the same time, we must also address declining interest in traditional definitions of membership while balancing our budget to ensure our success for generations to come.

The twin pillars of Temple's Strategic Plan are 1) increasing Temple's vibrancy and 2) transforming our revenue model to maintain financial solvency. The path forward we see inspires a more flexible and inclusive organizational structure, requiring three fundamental shifts in how Membership, Governance, and Individual Giving function at Temple Emanuel:

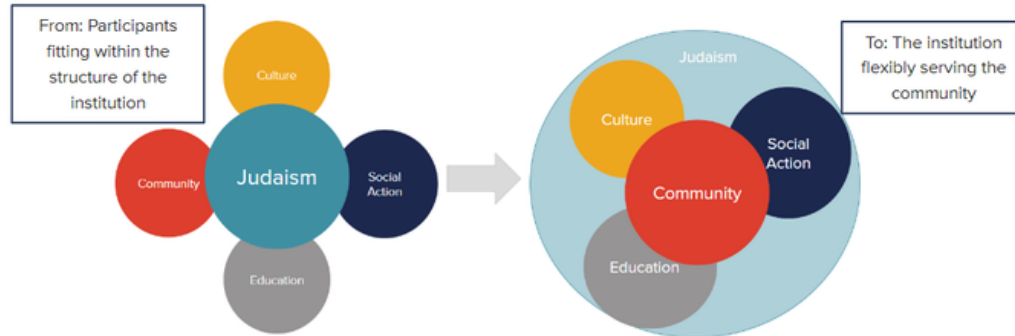
- Make it easier to feel a deep connection with Temple by changing traditional definitions of membership to make involvement in the community more accessible;
- Position Temple to operate more nimbly and responsively, centered on its mission by shifting its structure to one that is staff-led and continues to be guided by the community;
- Call on individuals to help us achieve continued financial solvency by contributing in accordance with the alignment between their individual values, the mission of Temple, and the actual costs to serve the community.

STRATEGIC PLAN UPDATES

Centering Our Community

At the core of these shifts is a transition toward centering the evolving, diverse needs of the Temple community and away from the traditional approach of expecting those connected to Temple to fit within the structure of the institution.

The future of Temple Emanuel requires a shift toward centering the community and its diverse, evolving needs.



Noble aspirations, all, and we have some work to do to operationalize this plan. You're probably wondering: what does it all mean for me?

For those who have long called Temple home and for those who feel well served by Temple, the short answer is that your experience of programs and services probably won't change much. We heard you during our listening sessions and throughout this multi-year process and have endeavored to keep everything you love about Temple. Your "Dues" statement might now say "Annual Financial Commitment" and we will ask you to consider participating more actively in regular townhall conversations instead of an "Annual Meeting," but Temple remains the community you know and love.

For those who are exploring Temple, are new to the community, or aren't currently feeling well-served, we hope this will eliminate perceived barriers and invite you to experience Temple in new ways. Come to a service, check out a volunteer project or adult education opportunity, and speak with a member of our clergy or staff team. We will ask you for financial support that aligns with your values down the road; for right now we just want you to find your fit in the Jewish community and here at Temple. Whether you are looking for a more casual relationship with a synagogue, making sure there are people or families like you counted among our community, or you are ready to jump in with both feet: we're here for it.

We hope these changes will also help Temple solidify our place in the broader South Hills community and perhaps more directly welcome to Temple many who have not considered engaging with a synagogue before.

Next Steps

To facilitate these shifts and help us prepare for the future, Temple's Board has considered a number of changes from our status quo, including 1) a move to an individualized giving approach instead of a one-size-

STRATEGIC PLAN UPDATES

fits-few dues model; 2) changing the structure of Temple’s governance model; and 3) thinking more inclusively about how Temple’s leadership can reflect the congregation. To help our community better understand where we think Temple is headed, we have scheduled multiple town hall meetings and information sessions to answer questions and address concerns.

Date	Time	Topic
Monday, September 30	7:00pm	Proposed Governance Changes VIRTUAL Town Hall
Saturday, October 12	2:00pm	Yom Kippur Afternoon Study Session
Thursday, October 17	6:30pm	Creating a More Inclusive Board Town Hall (Virtual and In-Person)
Sunday, October 20	11:00am	Temple’s Proposed Governance Changes Town Hall
Sunday, October 27	12:00pm	Bylaws Vote

We hope you are able to attend the meetings that fit into your schedule, and we also encourage you to reach out to the members of our Strategic Planning Steering Committee listed below:

[President Beth Schwartz](#)

[Immediate Past President Michelle Markowitz](#)

[Vice President Tony Pardo](#)

[Treasurer Steve Del](#)

[Trustee Rob Edelson](#)

[Senior Rabbi Aaron Meyer](#)

[Senior Director Kate Louik](#)



Read more on our website pages, linked above!

OCTOBER PROGRAMMING AT TEMPLE EMANUEL

SHANA
TOVA



Apples & Honey at Half Crown Hill Orchard Saturday, October 5th from 4:30 PM to 6:30 PM

Pack a picnic and join fellow families with young children to pick apples, taste honey made from bees on the orchard, play with giant bubbles, and meet some miniature goats! ¼ peck bags for picking apples and honey jars are available for individual purchase. RSVP to Sarah at smangan@templeemanuelpgh.org



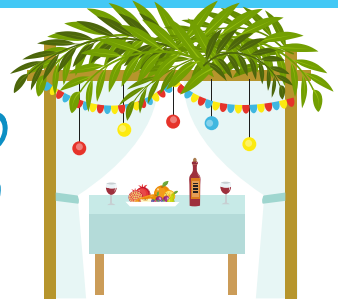
Team Sandwich:

Tuesday, October 15th at 1:00 PM

Join us to address food insecurity in the Pittsburgh region by making and donating sandwiches every third Tuesday of the month. Drop-off is at 1:00 pm.

Email Susie Hommel to sign up and learn more!

Happy
Sukkot



MOTE+ Sukkah Building & Pizza

Sunday, October 13th at 2:00 PM

Join MOTE+ to build the Temple Emanuel sukkah together and be the first to enjoy some *pizza in the hut* before the Steeler game! RSVP to Sarah.

Erev Sukkot Service

Wednesday, October 16th at 7:00 PM

Join us to welcome Sukkot and share a dessert in the sukkah.

WTE+ Soupkot Potluck

Sunday, October 20th at 6:00 PM

Let's stay warm during this late Sukkot with a *Soupkot* Potluck! Bring your favorite soup (outlets for crockpots will be available), soup dippers, drinks, or sides! [Sign up HERE](#).

TERMS Social in the Sukkah

Tuesday, October 22nd, 3:00 to 5:00 PM

Join TERMS for their fall social in the sukkah! RSVP to Alan Schorr.

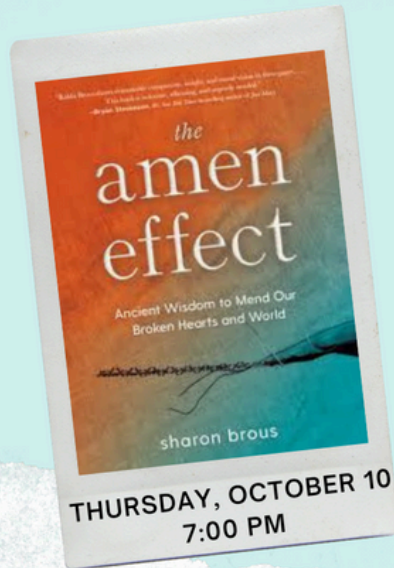
**Join us for our Bylaws Vote!
Sunday, October 27th at 12:00 PM**

JOIN US FOR

WTE+
Book Club

We will discuss Rabbi Sharon Brous' bestseller *The Amen Effect: Ancient Wisdom to Mend Our Broken Hearts and the World*.

Join us during the Days of Awe to discuss the book and its topics: the power of community and connecting more meaningfully through a Jewish lens.



Play Mahj!

Sunday, October 13th at 2:00 PM

Join in for table games of Mahjong. RSVP to Sarah.

KIDdish Club

Friday, October 18th at 5:30 PM

Join us for our monthly Shabbat service for families with children 0-6 years old! Email Sarah Mangan to learn more and RSVP.



Shabbat of Service Saturday, October 26th

Join us in an act of *Tikkun Olam* as we work with the Mt. Lebanon Nature Conservancy. Email Cantor Kalix for more information!



MOTE+ Brews Night

Thursday, November 7th at 7:30 PM

Join MOTE+ for locally brewed beer at Hitchhiker Brewing in Mt. Lebanon. RSVP to [Sarah](#).

KIDDISH Club

Friday, November 8th at 5:30 PM

Join us for our monthly Shabbat service for families with children 0-6 years old! Email [Sarah Mangan](#) to learn more and RSVP.

Baking Workshop: Oneg Cookies

Sunday, November 10 at 2:00 PM

Bake cookies for our Shabbat oneg tables with Temple Emanuel caterer and educator Melinda Freed! Join us for learning and *kehillah*. Email [Sarah Mangan](#) to learn more and RSVP.

Jewish Heritage Night

Wednesday, November 13th



Join the Pittsburgh Penguins and your Temple Emanuel Community for Jewish Heritage night! Meet and mingle with your Temple Emanuel community in the Ford Lounge during the second intermission.

[Click here for tickets!](#)

Mahj for a Cause

Sunday, November 17th at 2:00 PM

Join in for table games of Mahjong. Donations benefit Temple Emanuel's Giving Tuesday campaign. RSVP to [Sarah](#).

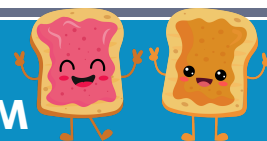
Abraham's Table

Monday, November 18th at 6:30 PM

Join the Temple Emanuel, St. Paul's Episcopal Church, and Turkish Cultural Center communities for another year of interfaith programs! [To sign up and learn more about this program, click here!](#)

Team Sandwich:

Tuesday, November 19th at 1:00 PM



Join us to address food insecurity in the Pittsburgh region by making and donating sandwiches every third Tuesday of the month. Drop-off is at 1:00 pm.

Email [Susie Hommel](#) to sign up and learn more!

Help Us Support Carnegie Elementary School's FreeStore15106 with Our Second Annual

Thanksgiving Food Drive

Saturday, November 23rd

from 10:00 AM to Noon

at Temple Emanuel of South Hills

Families with children of all ages are invited to join VolunTOTs, Uptown Speech Therapy, and Temple Emanuel to assemble kits of Thanksgiving sides and desserts for Carnegie Elementary School's FreeStore 15106. In addition to the kit assembly, there will be card making stations and a story time.

Sign up to join us here:

www.tinyurl.com/VolunTOTs2024



SAVE THE DATE

**58th ANNUAL INTERFAITH
THANKSGIVING SERVICE**

Tuesday, November 26th



DECEMBER PROGRAMMING AT TEMPLE EMANUEL

Temple Emanuel hosts

Azure Pittsburgh Family Concerts: Fall Series

Join us for "Festive Families," an event to get you in the holiday mood! Enjoy an evening of heartwarming holiday music, perfect for the whole family. Let's celebrate the season together with joyful tunes and festive cheer, featuring Chanukah and holiday favorites with a klezmer twist! [RSVP here.](#)

[Azure Pittsburgh](#)'s mission is "to foster community for people with autism by presenting interactive concerts in a welcoming environment."

Azure Pittsburgh recognizes that autism and related challenges can present barriers to attendance and engagement in a formal concert setting. We program the highest quality artists while taking care to consider and remove as many barriers as possible to create a sensory-friendly environment where all people are accepted, embraced, and celebrated.

At an Azure concert, if you want to sing, dance, vocalize, or clap, you're welcome to do so, and if you need a break, there's always a designated quiet space for you. Azure concerts are a place for connecting with each other through music.

Sunday, December 1st at 2:00 PM

Save the Date!

Temple Emanuel's Annual Chanukah Dinner & Service

Friday, December 27th



More details to come!

Did you know that Temple Emanuel also has a choir, a Grandparents Group, and GSA Groups? Want to get involved? Email [Sarah Mangan](#) for more information!

MOTE+ Brews Night

Thursday, December 5th at 7:30 PM

Join MOTE+ for locally brewed beer at Chimera Brewing in Castle Shannon. RSVP to [Sarah](#).

KIDDISH Club

Friday, December 13th at 5:30 PM

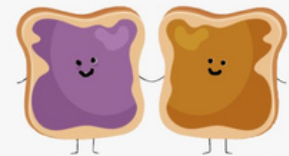
Join us for our monthly Shabbat service for families with children 0-6 years old! Email [Sarah Mangan](#) to learn more and RSVP.

WTE+ Art, Wine, and Cheese

Sunday, December 15th at 7:30 PM

Save the date to join Rabbi Emily for WTE+'s seasonal Art, Wine, and Cheese night! More information to come.

Team Sandwich
Tuesday, December 17th



Every month for 3 years, Temple Emanuel volunteers have donated their time and sandwich supplies to prepare sandwiches for our South Hills neighbors facing food insecurity.

Want to be part of the effort? All you need is a loaf of bread or two, sandwich fillings of your choice, and an email to Susie Hommel to let her know you're planning to donate: shommel46@gmail.com.

Shabbat of Service

Saturday, December 21st

Give back during Shabbat with your Temple Emanuel community. Email [Cantor Kalix Jacobson](#) for more details!



Play Mahj!

Sunday, December 22nd at 2:00 PM

Join in for table games of Mahjong. RSVP to [Sarah](#).

Thank you to the donors who help sustain Temple Emanuel through contributions to our various funds!

Donations to Temple Funds as of September 13, 2024

Cantor Jacobson Discretionary Fund

Donor	In Honor
Barry Benson	Karla & Mickey Benson Candle Lighting
Caleb & Dylan Mangan Hebrew Congregation of Chautauqua Iris & Chris Harlan	In appreciation of Cantor Kalix In appreciation of Cantor Kalix
Naomi & Howard Pittle Sherri Ciota Susan & Daniel Simons Tracey & David Palmieri	Naming of Penelope Zahava Lee Harlan & gratitude for Cantor Kalix Merrit's Bar Mitzvah In appreciation of Cantor Kalix In appreciation of Cantor Kalix Kaiya Josephine Cadiz Palmieri
Donor	In Memory
Andrea & Jeff Fitting Beth & Matt Schwartz	Peter Slania Shirley Kohn

Brenda & Larry Miller Memorial Caring Community

Donor	In Honor
Sandy & Lee Golomb	Bunny Schorr for her vounteer work for Temple and the community
Sandy & Lee Golomb	Alan Schorr's special birthday
Donor	In Memory
Susan & Richard Hommel Susan & Richard Hommel Susan & Richard Hommel	Barbara Eisenstat Yalisove Shirley Kohn Sylvan Holzer

Cemetery Beautification Fund

Donor	In Memory
Barbara & Gerald Chotiner Bernice Slifkin Elaine Goldblum Ellie Bahm Esther Kaufman & Children Howard Myers Jeffrey Levin Joan Ochs JoAnn Goldberg Judy Nesvisky Linda Sloan Marsha Mintz Mitchell Taback Nancy & Michael Lichtenstein Nancy Weissman Penny & David Abrams Penny & David Abrams Penny & David Abrams Penny & David Abrams Robin & Steve Hausman	Donation Irving Slifkin Meyer Feinberg Barbara Eisenstat Yalisove Donald Philip Sadkin Sandy Dickinson Sandra & Mark Levin Sandra & Melvin Gitelman Marc A. Goldberg Donation Howard Sloan Lewis Winnecour Barbara Taback Marvine Lichtenstein Jacquelin Wechsler Lena Abrams Amber N. Abrams Isadore Abrams Meyer Handmaker Peter Fitting Slania

Cemetery Beautification Fund (continued)

Donor	In Memory
Roslyn Goorin Sally Lebowitz Selma Furst Susan I. Eger The Myers Family	Stan Goorin Milton Lebowitz Robert Furst Leah Israel Sandy Dickinson

Charlotte & Peter Cooper Family Garden Fund

Donor	In Memory
Janet & Jerry Cooper Janet & Jerry Cooper Ruben Abramovitz	Arlene C. Abramovitz Charlotte B. & Peter Cooper Anita McNabb

Diskin Music Fund

Donor	In Memory
Betty Jo & Howard Louik Irene Luchinsky Marcia & Gerald Rubenstein	Melvin Bleiberg Rabbi Fred Pomerantz Barbara Yalisove

Eileen Wolf Memorial Fund

Donor	In Honor
Barbara & Milton Wolf	50th Anniversary of Alice & Mark Mahler
Donor	In Memory
Barbara & Milton Wolf Barbara & Milton Wolf	Shirley Kohn Barbara Yalisove

General Fund

Donor	In Honor
Andrea & Jeff Fitting Aron Wolfson Huebscher	Birth of Eli David Sparkman In appreciation of Rabbi Aaron Meyer
Barbara Trachtenberg	With gratitude for the outgoing & incoming Temple Board
Beth & Matt Schwartz	50th Anniversary of Alice & Mark Mahler
Iris & Chris Harlan	Michelle Markowitz's service as president of Temple Emanuel
Iris & Chris Harlan	David Weisberg receiving the Manny Award
JoAnn Goldberg	50th Anniversary of Alice & Mark Mahler
Laryn & Moses Finder	Beth Schwartz becoming President of Temple Emanuel
Laryn & Moses Finder	Temple Staff For All They Do

General Fund (continued)

Donor	In Honor
Laryn & Moses Finder	Michelle Markowitz's service as president of Temple Emanuel
Laryn & Moses Finder	David Weisberg receiving the Manny Award
Laryn & Moses Finder	Paula Spock, Bookkeeping Superb
Laryn & Moses Finder	Kim Rullo, Ultimate Photographer and Sings Too
Laryn & Moses Finder	Bunny Schorr, Distinguished Service Award
Laryn & Moses Finder	Maddie Dorish, college graduation
Leslie Hoffman	Susan & Richard Hommel's 55th Anniversary
Meg & Keith Abrams	Bunny & Alan Schorr for their Volunteerism
Meg & Keith Abrams	Sandy & Lee Golomb for their Volunteerism
Nancy & Will Joseph	50th Anniversary of Alice & Mark Mahler
Robin & Steve Hausman	50th Anniversary of Alice & Mark Mahler
Ruth Novice	Speedy Recovery for Alan London
Ruth Novice	Engagement of Zach Bahm to Lexi Mazur
Ruth Novice	Marriage of Scott Stevenson's son
Susan & Richard Hommel	Rebecca Zahalsky becoming a Bat Mitzvah

Donor	In Memory
Abrams & Dorish Families	Shirley Kohn
Alan Rosenthal	Shirley Kohn
Anna Lisa, Jordan & Shelby Silberman	Sara Radman
Anne Watzman	Ronald Watzman
Arnold & Sandra Ruben	Rose Ruben
Beth & Matt Schwartz	John Wisler
Cindy & Jack Bouer	Barbara Eisenstat Yalisove
David Katz	Lynn Schwartz Katz
Diane & Arnold Eger	Shirley Kohn
Elaine & Alan London	Edward Wittlin
Elaine & Alan London	Charles Wittlin
Eve Fischer	Frank Lalama
Heidi Russman	Judith Rodney
Ilene Trachtenberg Iskoe	Abe Leonard Trachtenberg
Irene Luchinsky & Allen Beitman	Shirley Kohn
Iris & Chris Harlan	Gertrude Mallet
Jim Lange	Shirley Kohn
Joan Sweet	Rabbi Fred Pomerantz
JoAnn Goldberg	Shirley Kohn
Judith Levitt Cohen	Arthur Harris Levitt
Karen & Tony Captline	Robin Snyder
Karen & Tony Captline	Barney Snyder
Laryn & Moses Finder	Lenny Kent
Laryn & Moses Finder	Shirley Kohn
Laura & Jeff Young & Family	Elinor Young
Laurey & Steve Silverman	Abe Silverman
Linda & Paul Richardson	Bernard Herman
Linda Scott	Shirley Kohn
Linda Sloan	Martin C. Sloan
Marcy Bernson	Sanford Lichtenstein
Marcy Bernson	Barbara Eisenstat Yalisove
Marcy Bernson	Wilma Rosen
Margie & Bill Stang	Peter Fitting Slania

General Fund (continued)

Donor	In Memory
Margie & Joel Caplan	Barbara Eisenstat Yalisove
Mark Frumkin	Pearl Frumkin
Melinda Freed	Marilyn Freed
Michelle Dreyfuss	Wilma Rosen
Nancy & Bill Berkowitz	Pearle Berkowitz
Naomi & Howard Pittle	Rose Ruben
Neal Pollon	Beatrice Bunin Pollon
Rikki Hommel & David Weisberg	Shirley Kohn
Rikki Hommel & David Weisberg	Debra & John Mullins
Rita Cobbett	Abe Shore
Rita Cobbett	Allen Cobbett
Robin & Steve Hausman	Clem Perlman, beloved uncle
Roslyn & Donald Small	Benjamin Plotkin
Ruth Novice	Barbara Eisenstat Yalisove
Ruth Novice	Roger Volk
Ruth Novice	Stacey Pellegrino's mother
Ruth Novice	Judge Jeffrey Manning
Sisters of Charity	Barbara Daniels
Steve Hausman	Shirley Kohn
Susan & Stephen Kroungold	Francie Hausman
Susie & Steve Silbermann	Shirley Kohn
Temple Board	Lisa Silbermann
Temple Board	Barbara Eisenstat Yalisove
Temple Board	Shirley Mason Weinberg Kohn
Temple Board	John Wisler
Temple Board	Irvin Beck
Temple Board	Rabbi Fred Pomerantz
Temple Board	Sylvan Holzer
Temple Board	Melvin Bleiberg
Temple Board	Israel Kleiner
Temple Board	Debra Mullins
Temple Board	John Mullins
Temple Board	Anitz McNabb
The Dvorin Family	Debra & John Mullins
The Intersection, Inc.	Shirley Kohn
Wendy Freed & Family	Rita Freed

Holocaust Memorial Garden Fund

Donor	In Honor
Bunny & Alan Schorr	Lynn Rubin's 20 year commitment to the Holocaust Garden

Donor	In Memory
Ava & Peter Alt	Our Parents
Bob Randall	Marga & Jordan Randall
Lynn & Harvey Rubin	Johanna Zimmerman
Nichola & Anthony Moretti	Elizabeth Crosby Pickens

Martha Klein Lottman Family Fund

Donor	In Memory
Betty Jo & Howard Louik	Barbara Eisenstat Yalisove

Nan Simon ECDC Fund

Donor	In Honor
Barbara Greenberg	Engagement of Zack Bahm to Lexi Mazur
Donor	In Memory
Irene Luchinsky	Hal Luchinsky
Irene Luchinsky & Allen Beitman	Barbara Yalisove
Nanette & Jeff Simon	Irene Simon Losman

Rabbi William Sajowitz Endowment Fund (cont.)

Donor	In Memory
Roz & Farrel Levine	Rabbi Fred Pomerantz
Roz & Farrel Levine	Edith Levine
Roz & Farrel Levine	Joseph Newhouse

Louise "Sissie" Sperling Endowment Fund

Donor	In Honor
Anonymous	Donation

Rabbi Mark Joel Mahler Rabbinic Chair Fund

Donor	In Honor
Mindy Hutchinson	50th Anniversary of Alice & Mark Mahler
Barbara Trachtenberg	50th Anniversary of Alice & Mark Mahler
Lori & Daniel Rothschild	50th Anniversary of Alice & Mark Mahler
Shelley Hiegel	50th Anniversary of Alice & Mark Mahler
Tracey & Jim Tierney	50th Anniversary of Alice & Mark Mahler

Yahrzeit Remembrance Fund

Donor	In Memory
Betty Jo & Howard Louik	Bertha Hirschfield
Bonnie Benhayon	Shirley K. Ferron
Carol & Ted Goldberg	Margaret Goldberg
Dorothy & Neal Pollon	Gerald Edward Pollon
Dorothy & Neal Pollon	Morris Pollon
Ellen & Tim Drook	David Bialosky
Janice Seidenfeld	Shirley Greenberg
Judy Nesvisky	Leo Stern
Judy Nesvisky	Fanny Stern
Ken Kantrowitz	Susan Kantrowitz
Laryn & Moses Finder	Stella Sax
Laryn & Moses Finder	Dora Borgenicht Finder
Laryn & Moses Finder	Sheldon Sax
Lee Golomb	Bernard L. Golomb
Nancy Gusky	Harriet Rosenbaum
Nancy Gusky	Albert Gusky
Nancy Gusky	Jay Gusky
Nancy Gusky	Henry Gusky
Noel & Samuel Bliman	Irwin Bliman
Paul Herman	Martin Herman
Phyllis & Robert Henderson & Family	Morris Henderson
Ruben Abramovitz	Bella Abramovitz
Ruben Abramovitz	Arlene Abramovitz
Sally Lebowitz & Family	Sam Eisenstat
Sandy Golomb	Erwin Rubenstein
Shelley Berman	David Berman
Silvana Kelly	Sean Sion Rasmussen
Susan Lipsitz	Simpson Schechter
Susan Lipsitz	Jean Schechter
Terri Greenberg & Family	Allen M. Hoffman
Terry & Steve Erenrich	Edith Bernstein

Rabbi Meyer's Discretionary Fund

Donor	In Honor
Joy Meyer	In Appreciation
Meredith & David Cohen	Alice & Mark Mahler's 50th anniversary
Robin & Steve Hausman	In appreciation of Rabbi Aaron for Eli's baby naming
Sherry Lamacchia	In appreciation of Rabbi Aaron
Susan & Daniel Simons	In appreciation of Rabbi Aaron
Tracey & David Palmieri	Kaiya Josephine Cadiz Palmieri
Georgia Kent	In Appreciation
Donor	In Memory
Roz & Ed Friedman	Martin Marcovitz
Ellen Breslin	Sayda Meyer Melamed
Ellen Breslin	Benjamin Melamed
Gary Brant	Barbara Eisenstat Yalisove
Kate & Joel Rosenthal	Wilma Rosen
Kate & Joel Rosenthal	Barbara Eisenstat Yalisove
Meg & Keith Abrams	Les Abrams

Rabbi William Sajowitz Endowment Fund

Donor	In Honor
Fred Fabricant	50th Anniversary of Alice & Mark Mahler
Gwenn & Jim Gilchrist	50th Anniversary of Alice & Mark Mahler
Linda Frankel	50th Anniversary of Alice & Mark Mahler
Roz & Farrel Levine	Speedy Recovery for Carl Zittre
Roz & Farrel Levine	Speedy Recovery for Debbie Cook

Zolot Israel Adult Scholarship Fund

Donor	In Honor
Rita & Stu Zolot	Jackson Levine becoming a Bar Mitzvah
Rita & Stu Zolot	Birth of Eli David Sparkman, grandson of Robin & Steve Hausman
Donor	In Memory
Rita & Stu Zolot	William Topolsky
Rita & Stu Zolot	Allen Brufsky
Rita & Stu Zolot	Rabbi Fred Pomerantz
Rita & Stu Zolot	Lenard Kent

Zolot Israel Adult Scholarship Fund (continued)

Donor

Rita & Stu Zolot
Rita & Stu Zolot

In Memory

Peter Slania
Debra & John Mullins

Yahrzeit Plaques

Donor

Alan Schorr
Alan Schorr
Karen Captline
Rob Brenner
Rob Brenner
Susan McClure
The Beck Family

In Memory

Gertrude Schorr
Robert Schorr
Robin Snyder
Max Ross Brenner
Marianne Rose Brenner
Bernice Frank
Irvin M. Beck

To learn more about these
funds, visit our
[Funds page here.](#)

To make a charitable
donation, visit our
[Donations page here.](#)

Circles of Giving

Circle 1

Lynn & Carl Bahm
Amy & David Bahm
Eleanor Bahm
Tracy & Michael Barnett
Melissa & Michael Bihary
Jane & Joseph Blattner
Karen & Anthony Captline
Janet & Gerald Cooper
Mary Cothran
Laura & Brian Davidson
Katie & Peter Davis
Jamie & Steven Del
Diane & Frank Dreifuss
Vonya & Nathan Eisinger
Kathy & Howard Ginsburg
Ben Handen & Dianna Ploof
Susan & Richard Hommel
Carol & Irv Horowitz
Nancy & Will Joseph
Carol & Peter Kaplan
Elaine & Alan London
Linda & Stuart Nyman
Byron Rose
Lori & Daniel Rothschild
Lynn & Harvey Rubin
Deborah & Paul Rudoy
Debra & Ronald Schneider

Circle 1 (cont.)

Bunny & Alan Schorr
Sharon & Jack Soodik
Mitchell Taback
Barbara & Eric Udren
David Weisberg & Rikki Hommel
Nancy Weissman
Barbara & Milton Wolf
April & Stanley Zaslau
Marion Zeichner
Rachel & Steven Zoffer

Circle 2

Barbara & Gerald Chotiner
Meredith & David Cohen
Diane & Arnold Eger
Beth & Daniel Erlanger
Carol & Theodore Goldberg
Sandra Kaplan & Karl Brammer
Marlene Naft
Amy & Anthony Pardo
Celeste & Rafael Schmulevich
Beth & Matthew Schwartz
Barbara Trachtenberg
Laura & Jeffrey Young

Circle 3

Laryn & Moses Finder
Andrea & Jeffrey Fitting
Robin & Steve Hausman
Lynn & Larry Lebowitz
Betty Jo Hirschfield Louik &
Howard Louik
Michelle & Pace Markowitz
Caroline & Erik Naft
Joan & Ronald Rothaus
Marcia & Gerald Rubenstein

Circle 4

Dvorin Family
Sarah & Alicia Kozel
Veronica & Jon Schmerling
Elisia & Charles Silverstein

Circle 5

Erica & William Goodman

Circle 6

Jill & Adam Brufsky
Dorothy & Neal Pollon
Lori & Robert Shure
Amy & Andrew Zahalsky



CONTACT US



412-279-7600



TempleEmanuel@TempleEmanuelPGH.org



1250 Bower Hill Road
Pittsburgh, PA 15243



[Follow us on Facebook!](#)



[Follow us on YouTube!](#)



[Follow us on Instagram!](#)

We are here for you!

Please stop by or reach out via phone or email.

Our office is open:
Monday - Thursday, 9AM-2PM
Friday, 9AM-Noon

Rabbi Aaron Meyer

ameyer@templemanuelpgh.org

Cantor Kalix Jacobson

kjacobson@templemanuelpgh.org

ECDC Director & Temple Senior Director

Kate Louik

klouik@templemanuelpgh.org

Assistant Director of ECDC & Communications Associate

Ellen Drook

edrook@templemanuelpgh.org

Torah Center Director & Event Coordinator

Steph McFerron

smcferron@templemanuelpgh.org

Programming & Communications Director

Sarah Mangan

smangan@templemanuelpgh.org

Finance & Development Director

Rebecca Closson

rclosson@templemanuelpgh.org

Office Manager

Lori Blattner

lblattner@templemanuelpgh.org

Temple's Board President

Beth Schwartz

president@templemanuelpgh.org



LIVING · LEARNING · LEADING