



Bulletin

1250 Bower Hill Road Pittsburgh, PA 15243

<http://www.templeemanuelpgh.org>

Vol. 21, #10 - 10 issues

August 2018, Av/Elul 5778

תפילה ת'פילה

Babysitting

Available during Friday Shabbat Services

Friday, August 3

Pre-Oneg—5:45 pm

Shabbat Service—6:30 pm

Saturday, August 4

Torah Study—9:00 am

Ekev, Deuteronomy 7:12-11:25

Shabbat Morning Service—10:30 am

Sunday, August 5

Morning Minyan—9:30 am

Friday, August 10

Pre-Oneg—5:45 pm

Shabbat Service—6:30 pm

Saturday, August 11

Torah Study—9:00 am

Re'eh, Deuteronomy 11:26-16:17

Shabbat Morning Service—10:30 am

Sunday, August 12

Morning Minyan—9:30 am

Friday, August 17

Pre-Oneg—5:45 pm

Shabbat Service—6:30 pm

Saturday, August 18

Torah Study—9:00 am

Shofetim, Deuteronomy 16:18-21:9

Shabbat Morning Service—10:30 am

Sunday, August 19

Morning Minyan—9:30 am

Friday, August 24

Pre-Oneg—5:45 pm

Shabbat Service—6:30 pm

Saturday, August 25

Torah Study—9:00 am

Kee Tetze, Deuteronomy 21:10-25:19

Shabbat Morning Service—10:30 am

Emma Hicks, Bat Mitzvah

Sunday, August 26

Morning Minyan—9:30 am

Friday, August 31

Pre-Oneg—5:45 pm

Shabbat Service—6:30 pm

Saturday, September 1

Torah Study—9:00 am

Ki Tavo, Deuteronomy 26:1-29:8

Shabbat Morning Service—10:30 am

Selichot Service

Reception—7:30 pm

Musical Service—8:15 pm

Sunday, September 2

Morning Minyan—9:30 am

Cemetery Memorial Service—11:00 am

Temple Emanuel Section in

Mt. Lebanon Cemetery

From Rabbi Don Rossoff



As a person who encourages others to develop the "attitude of gratitude," I want to express my gratitude to all those in our Temple Emanuel community who have given Fran and me such a warm reception since we landed in the South Hills in late June. Rabbi Locketz, Leslie, and Iris, as well as the office and maintenance staff have bent over backwards to make my landing into Temple life as smooth as can be. And I am especially grateful to Rabbi Mahler for his open and gracious welcome. Thanks to you all!

Many people do not know what an Interim Rabbi does. Some do not see the need to delay a year before getting the new "real" rabbi. For those, I simply recommend speaking with members of those congregations which hired a rabbi to be the successor of a long-serving rabbi but who instead became the "unintentional interim." Synagogues are finally catching up with the Christian community which has seen the importance and wisdom of having interim clergy for decades..

This year I will be one of your Rabbis, doing what Rabbis do, here to serve you along with Rabbi Locketz and our wonderful staff. But an Interim Rabbi is more than just a place holder. My purpose here is to walk alongside you through this year of transition, to help you say good bye and mourn that which was as well as to help you envision what might yet be. We know what was. We do not yet know what will be. It is unsettling. It is also exciting. While it will be important to maintain a sense of familiarity and being at home here, the transitional year also offers us opportunities to experiment, to try new things to see if they fit our community. Some will fit; others might not. In this regard, during this year of continuity and change, your feedback will be so very important. I really want to hear from you!

I imagine that I will be seeing some of you every week at Temple, others of you only on the High Holy Days, and most of you somewhere in between. If we have not met, I ask you please to introduce yourself when you can. (And if we have met, please remind me of your name when we meet again.) Please remember that I am here for YOU, for your rabbinic needs as one of your Rabbis. In that regard, I would be happy to make an appointment to meet with you - by yourself or with your family - to discuss whatever might be on your mind or simply to get to know one another.

Fran and I are looking forward to a wonderful year in the Pittsburgh area as part of the Temple Emanuel family. I know this year will fly by very quickly. I hope that we will make the most of every day we are together. And let's be grateful for all the special people in our lives and for each precious moment with which God blesses us.

In friendship,
Rabbi Don Rossoff

From Jessica Locketz, Educator

The Gift of Elul

Once again, the month of *Elul* is nearly upon us – it begins at sundown on Friday, August 14th. The start of Elul means that the High Holidays are right around the corner. It is difficult to imagine the start of Rosh Hashanah being so near – I have a sermon yet to be written, stories yet to be found and mastered, and liturgy to be reviewed and practiced. It is hard during these too warm days of summer to see ourselves wearing our holiday best, spending long hours together in soulful worship as we pray for another good and meaningful year. In August, the holidays seem so far away.

Our tradition understands our need to ease into the season; hence the month of *Elul*. Why an entire month? Our tradition tells us that because these days are filled with so much meaning and potency, they require a special measure of readiness. Thus we are called upon to enter the aptly named 'Days of Awe' thoughtfully; to be ready to once again seek repentance and renewal.

As the Maharal of Prague said, "All the month of Elul, before eating and sleeping, a person should look into his soul and search his deeds, that he may make confession."

In other words, each of us has been given a gift. The month of Elul offers a structured opportunity to truly examine ourselves – and to discover what changes we need to make to be the best that we can be. So...let the reflection and introspection begin!

Here are some ideas to get you started:

Reflect on Your Relationship with God

The word Elul can be understood as an acronym for the Hebrew verse *Ani L'dodi V'dodi Li*—"I am my Beloved's and my Beloved is mine" (Song of Songs 6:3). Believing that the 'beloved' refers to God, the sages take this verse to describe the particularly loving and close relationship between God and the people Israel, and thus between God and ourselves. Elul, then, is our time to re-establish this closeness, to reconnect with God.

Suggestion: Think about your relationship with God. Try to imagine a more intimate relationship, as if God were your beloved. Honor yourself (and God!) by seeing yourself as *B'tzelem Elohim*, created in 'God's image' and treat yourself as you would treat a much loved one.

Reflect on Your Relationship with Each Other

From our High Holiday prayer book:

For transgressions against God, the Day of Atonement atones; but for transgressions of one human being against another, the Day of Atonement does not atone until they have made peace with one another (*Mishnah*).

Attending services throughout the High Holidays is not enough; according to our tradition, we are supposed to resolve conflicts in our relationships by dealing with them face to face. It is never too early to start - Elul is the month in which to begin the healing process by asking forgiveness for our wrong doings.

Suggestion: As part of your *teshuvah* (repentance) process, try to sort out difficult relationships (with people, organizations) that drain you of your creative energy. Think about what steps need to be taken to move forward into the next year.

Reflect on Your Relationship with Yourself

The Physical: Elul is a time not only for introspection but also for inspection. Now is the time to make sure that you are taking care of your physical well-being as well as examining your spiritual health. This means setting aside time to get checked out by the professionals – physicians, dentists, etc. – all those who keep us healthy on the outside.

The Spiritual: Many of us already do visit our doctors and dentists for routine checkups... but how many of us have ever had a *spiritual* checkup? No medical professionals or office visits are required. Simply making the time to review the past year and coming up with a plan for the next one can fill our days with meaning.

Suggestion #1: Take some time to answer the following questions. They may be helpful in guiding you through this period of reflection and introspection:

1. When do I find my life is most meaningful?
2. Have I ever told those who mean the most to me how I feel about them?
3. If I could live my life over, would I change anything?
4. What would bring me more happiness than anything in the world?
5. What are three of my most significant achievements in the past year?
6. What are three of the biggest mistakes that I have made in the past year?
7. What project or goal, if left undone, will I most regret next year?
8. What are three major goals in my life?
 - a. What am I doing to achieve them?
 - b. what practical steps can I take towards reaching these goals?
9. If I could give my children (or others) three pieces of advice, what would they be?

Suggestion #2: Plan to take part in a more formal reflection through the Reboot initiative 10Q (ten questions) and its website <https://doyou10q.com/>. From Rosh Hashanah

(Cont'd on page 3)

(Cont'd from page 2)
 From Jessica Locketz, Educator

The Gift of Elul

through Yom Kippur, a question is sent via email each day to give you the opportunity to think about the year that has passed. Your answers are saved in a secure online vault (answers are shared only if you give permission) and then returned to you a year later as the process begins again. It's fun to see how answers change from year to year, and to document and recall the people, events, thoughts and actions that make up each year of our lives. Sign up now to receive the questions...and be ready to go on Rosh Hashanah.

The month of Elul is a gift, allowing us take time for self-reflection in the weeks before the holidays begin. May we make the most of it – and find relevance and meaning as we approach the High Holidays.

IT'S PARTY TIME! TORAH CENTER KICK OFF

Make a splash with your friends from Torah Center! Kick off the school year with fun for all.



- What:** Swim & Pizza Party
- Where:** Bower Hill Swim Club
- When:** August 22nd
6 PM to 8 PM
- Who:** All Pre-K - 7th Grade
Torah Center students & families
- Cost:** Free to all who attend

Please RSVP by August 16th to Paula at torahcenter@templemanuelpgh.org.

Shabbat Afternoon Family Hike with Rabbi Locketz



Grab your hiking shoes (or boots) and join Rabbi Jessica Locketz and her family for an exhilarating Shabbat afternoon hike through Boyce Mayview Park! Don't miss this chance to stretch your legs and clear your mind – there's nothing like a bit of fresh air and a nice hike! Bring sturdy (and waterproof!) footwear (it could be really muddy!), plenty of water and snacks for the trail, and be a part of the fun.

When: Saturday, September 1, 3:00 pm

Trail length: We'll hike for an hour or so at an easy pace.

Starting Point/Directions: We will be meeting in the parking lot of Ardolino's Pizza at 1141 Boyce Rd, Pittsburgh, PA 15241. This will put us near the start of the Wetlands Trail.

Hike Info: This is a Family-friendly hike - Bring the Kids! Serious hikers and casual strollers alike are encouraged to attend.

Questions: Contact Rabbi Locketz at 412.279.7600 or jlocketz@templemanuelpgh.org

Join us for First Friday Shabbat Under the Stars! Friday, September 7th Service at Bird Park

Enter via Cedar Blvd., Pgh. PA 15228

Not ready for summer to end? Neither are we! Your campfire-side seat is saved at this "camp-style" Shabbat experience on Friday, **September 7th, 5:45 pm at Bird Park.**

Bring your picnic dinner, lawn chairs and bug spray. Temple will provide s'mores and an inspirational worship experience.

**Dinner—5:45 pm
 Services—6:30 pm**

President's Message

From David Weisberg

The following was my speech from the Annual Meeting on June 10, 2018:



I am David Weisberg and proud to be President of Temple Emanuel.

But before we jump into the program, I'd like to thank Rabbi Mahler. I am proud to have served with him. And I am proud to be an endcap to his historic time with our congregation. Thank you for all you have done for us.

I'd also like to thank Rabbi Locketz for everything she has done this year. From leading us in worship as well as education, she has continued to be a stabilizing force for Temple Emanuel. Thank you.

Thank you Leslie Hoffman, Iris Harlan and our staff for all of your efforts to keep this place running.

And finally, I'd like to thank our Board of Trustees, who have helped lead our congregation and make these past two years among the most engaging, fulfilling, introspective, strategic and frankly enjoyable time for me as a volunteer.

Please join me in recognizing the members of our Board: our Vice Presidents Michelle Markowitz, David Rullo, Renee Tatro and Jeff Young, our Co-Treasurers Lee Golomb and Jason Green, Financial Secretary Keith Abrams, Secretary Mary Cothran, Board members Artie Baran, Marci Barnes, Mitch Bober, Adam Brusky, Nate Eisenger, Sara Frey, Max Louik, Ron Richards, Jo Schuman, Beth Schwartz, Lisa Steinfeld, Barb Udren, Jeff Weiner, and of course, our Immediate Past President Dan Rothschild. Thank you all for your service.

So here we are. At the end of my first two years as President of Temple Emanuel and I think of us in three words – Who, What and Why.

Who: Who is Temple Emanuel? Who are we now?

What: What do we want to become? What steps are needed? What will the future look like?

Why: This is the most important question of all as we move ahead and will shape us moving forward.

Let's start with the first question. Who are we?

It's easy, right? We are the only Reform congregation in the South Hills of Pittsburgh. We are the largest congregation in the South Hills. We have the largest pre-school in the South Hills. We have the largest Torah Center in all of Greater Pittsburgh.

We are a 67 year old congregation who has had the benefit of having two rabbis, one of them Rabbi Mahler, who as we all know, is retiring at the end of June after serving us for 38 years. This makes him the longest-tenured Rabbi of any congregation in Greater Pittsburgh.

So who is Temple Emanuel?

Our Vision: To help our congregants find more ways to live Judaism each new year more than the year before.

Our Mission: Is to preserve, strengthen, and realize the sacred principles and practices of Judaism.

Yes, what I just reviewed is who we are today. But with Rabbi Mahler leaving, we will inherently be going through change. Rabbi Rossoff will be joining us as our interim rabbi beginning July 1st. Then one year later, July 1, 2019, we will have new settled rabbi.

Change is easy. It happens in a moment. Change is ordinarily good, except when it is implemented too quickly or poorly. We have been fortunate here at Temple Emanuel that we have been given ample time to prepare and celebrate the legacy left by Rabbi Mahler.

Transition, on the other hand, takes a long time and is more psychological. It happens differently for everyone. I along with the rest of the Board and many here in the room have been going through transition at the forefront of our congregation. But many of us, including many not in this room, have not truly begun that transition. For them, it will likely begin when they would have expected Rabbi Mahler to be there and he is not. It may be a Shabbat service, High Holidays, baby naming, B'Nai Mitzvah, wedding or funeral. We need to be aware and sensitive that we all will be living this transition together, just at different speeds.

It is my role and frankly Rabbi Rossoff's role as our Interim Rabbi who has been trained on helping congregations through transition to help guide us through this period. He will be here to help all of us – congregants and staff. It will be difficult for many and exciting for others as we move through this transition together.

So now the what? We all have been deliberate and measured during this period. Here's a quick recap of the steps we've taken in order to help in answering these "what" questions: What do we want to become? What steps are needed? What will ensure our future?

1. 18 months ago, the Board decided we wanted to go with a one-year Interim Rabbi, which is typical, rather than straight to a new Settled Rabbi, allowing for the congregation to take a deep breath.
2. 15 months ago, the Interim Rabbi Search Committee was formed.
3. 10 months ago, the Interim Rabbi Congregational survey was conducted.

4. 6 through 9 months ago, the Interim Rabbi application was submitted, a search was performed, candidates were interviewed and visited with us, the search committee issued a unanimous recommendation and there was unanimous recommendation from the HR Committee
5. 4 months ago we had unanimous board approval and unanimous Congregation approval for the hiring of Rabbi Rossoff. Thank you!
6. 3 months ago, the Settled Rabbi Search Committee was formed.
7. 6 weeks ago, the listening sessions began – input from broad cross-section of congregants through a survey and over 30 focus groups both in people’s homes and here at Temple Emanuel. This feedback will help shape not only what we are looking for in our next Rabbi but also who Temple will be going forward.

I've highlighted some of the steps over the past eighteen months that we've undertaken through the Rabbinic Search. Let's look at other items that we have been doing that will help in forming the foundation for Temple Emanuel's future:

1. Established a new restricted fund called the Rabbi Mark Joel Mahler Rabbinic Chair Fund that will fund the senior rabbi position in perpetuity.
2. Participating in the Life & Legacy partnership program of the Harold Grinspoon Foundation to support Jewish communities in securing after-lifetime gifts. Temple Emanuel is participating with other Jewish organizations in Greater Pittsburgh to secure legacy gifts, steward donors and integrate legacy giving into the philanthropic culture of the Jewish community. Please remember Temple Emanuel with a gift in your will, trust, retirement account or life insurance policy to our newly established Legacy Fund. There is no minimum. Please contact Leslie Hoffman or me to begin discussions.
3. One of the items of which I'm most proud is ensuring Temple Emanuel's future with the expansion of the Temple Emanuel section of the Mt. Lebanon Cemetery by acquiring 80 additional burial spaces. As many know, establishing a cemetery is one of the first priorities for a new Jewish community so this expansion of our cemetery will ensure our future.
4. A group of us went to the URJ Biennial conference this past December in Boston. We have brought back the best practices from across the Reform movement and have begun to institute them here at Temple Emanuel.
5. The Board and I will be taking a deeper dive into the 2017 Pittsburgh Jewish Community Study that was instituted by the Jewish Federation of Greater Pittsburgh. Some of you may have attended a panel discussion on which I participated on May 30th at the South Hills JCC. These results should help shape in reengaging current members and also reaching out to those who are not members of Temple Emanuel.

This leads to my last and most important question as we move forward: Why?

What is Temple Emanuel's *Why*? Some of you may be familiar with Simon Sinek's TED Talk and book, which is called "Start

with Why." As he says, "People don't buy What you do; they buy Why you do it." Every leader and organization knows the What. They can describe their products, their industry, and their competitors. The What is the easiest to know and articulate. Few organizations know or articulate their Why—their purpose, cause or belief. The Why is their reason for being. And the Why is why anyone should care.

A good example that Sinek discusses is Apple. Is Apple a computer company? A consumer electronics company? A smartphone company? These are all expressions of What. Apple doesn't start with What. They start with Why. In the early 2000's, Apple started a campaign to communicate the Why called "Think Different." Millions and millions of consumers identify with the Why. It's why every single iPhone release is an industry phenomenon. It's why customers are willing to pay premium prices, even when cheaper alternatives exist. Remember, people don't buy What you do, they buy Why you do it."

So what is Temple Emanuel's Why? Our congregation has started that process with the focus groups and survey that have just been completed in the past month and a half. We will continue this journey with Rabbi Rossoff this next year followed by our new Settled Rabbi. Over these next few years, I would expect we will be going through strategic planning, revisiting our vision and mission statements and utilizing other tools that will put us on a path to Why.

Changes are coming – and we will continue to focus on our Why.

Who... What... Why.

Who is Temple Emanuel? Who are we now?

What will the future look like?

Finally - Why? What is our Why?

Now we need to reach up and shout out. We want your continued input and engagement. I am very excited about our future. Temple Emanuel is on a very positive path and one that I hope you all will walk with me as we continue this journey. Thank you.

HOW WILL YOU ASSURE JEWISH TOMORROWS?

What aspects of Jewish life do you cherish most—learning, community, worship, caring for those in need or social justice? Whatever you care about most, by leaving a legacy you ensure the things you value are sustained for future generations.

To create your Jewish legacy contact:
Leslie Hoffman, Executive Director
lhoffman@templeemanelpgh.org, 412.279.7600 or
templeemanelpgh.org.

NEW YEAR GREETINGS FOR 5779

SEND YOUR NEW YEAR WISHES TO YOUR TEMPLE FAMILY!



Your greetings will be distributed at our High Holy Day services (Cerev Rosh HaShana is Sunday, September 9). This donation allows you to send a personalized greeting to members of our community and it shows your support of Temple.

Please note that families who are in Circles of Giving levels III or above are automatically included for a half page greeting in this booklet. **HOWEVER**, we ask those families to also complete the New Year's Greetings form so that we can be sure that your greeting is included.

In order for us to include your High Holiday Greeting, we have a deadline as of August 6th. Please return the completed form with your check to Temple Emanuel, 1250 Bower Hill Road, 15243.

DUE NO LATER THAN AUGUST 6, 2018

NEW YEAR GREETING FORM

I WOULD LIKE TO WISH OUR CONGREGANTS THE BEST IN THE NEW YEAR TO COME. I HAVE MADE MY SELECTION BELOW.

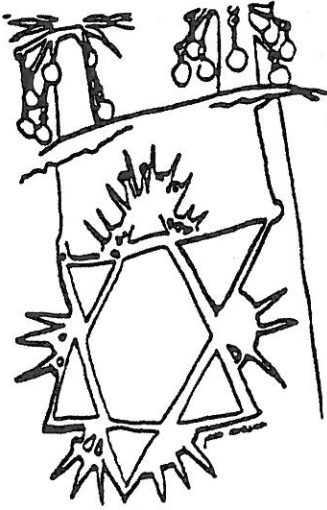
- Chai \$36.00 Two Lines, ONLY 32 SPACES PER LINE
- Double Chai \$54.00 Eighth of a Page
- Multiple Chai \$72.00 Quarter Page
- Multiple Chai \$154.00 Half Page
- Multiple Chai \$216.00 Whole Page

Greeting to read: _____

Total: \$ _____ We are Circle III or above

From: _____

BOOK OF REMEMBRANCE FOR THE NEW YEAR (5779)



“To live in hearts we leave behind is truly not to die.”

Inscription of the Weiner-Tumpson memorial sculpture standing on Temple’s front plaza

We invite you to participate in a meaningful way of remembering your departed loved ones. Once again we will be printing the Book of Remembrance to be used in 5779 for Yizkor services on Yom Kippur, concluding Sukkot, Passover and Shavuot.

Join with the many families of Temple Emanuel by participating. Submit the bottom portion of this form together with your check:

Payable to: Temple Emanuel
Note on memo line: Book of Remembrance
Send to: Temple Emanuel
1250 Bower Hill Road
Pittsburgh, PA 15243

In order for us to prepare this information in a timely manner before the Holy Days, we must have your information to Temple *no later than Tuesday, August 14, 2018.*

Book of Remembrance

The suggested minimum donation is \$36. We encourage additional donations for each loved one. *If death has occurred since last Rosh HaShana, indicate this information with an asterisk** (please print)

Example(s):
In memory of:
Joe Smith
Remembered by:
Ann Smith



In memory of:
Ruth & Joe Smith
Remembered by:
Ann Smith

Names to be remembered (print):

Remembered by (print):

Enclosed is my donation (we encourage additional donations for each loved one) in the amount of

\$540___ \$360___ \$216___ \$180___ \$108___ \$72___ \$54___ \$36___

Your donation remembers those you love throughout the year while providing much appreciated financial support for our Temple.

DUE BY TUESDAY, AUGUST 14, 2018

SELICHOT

Saturday Evening, September 1, 2018

Temple Emanuel of South Hills

7:30 p.m.

Reception & Musical Service

Beth El Congregation and Temple Emanuel of South Hills will join together to celebrate the lovely service of Selichot, the late evening service recited on the Saturday night before Rosh HaShana. The word Selicha means forgiveness, and Selichot begins the penitential season which starts before Rosh HaShana and concludes with Yom Kippur. Many of the prayers recited help prepare the worshipper for the coming season of reverence and set the mood for self-appraisal. Repentance is a process through which a person seeks forgiveness and then commits oneself to returning to Torah and its commandments.

HIGH HOLIDAYS CEMETERY VISITS AND SERVICES

Before Rosh HaShana and during the Ten Days of Repentance, the period between Rosh HaShana and Yom Kippur, are two times when it is traditional for Jews to visit the cemetery to visit the graves of departed family members and recite kaddish, the mourner's prayer.

Memorial Service

Temple Emanuel's Section

Mt. Lebanon Cemetery

Sunday, September 2 @ 11:00 a.m.

CEMETERY PLOTS NEW TEMPLE SECTION

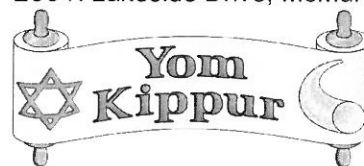
Temple Emanuel has entered into an agreement with the Mt. Lebanon Cemetery to acquire additional burial spaces for our members. There are a limited number available and they are located adjacent to the existing Temple Emanuel section of the cemetery. If you are interested in purchasing plots, please contact Leslie Hoffman, 412.279.7600 or lhoffman@templeemanuelphg.org to discuss availability and payment options.

HIGH HOLY DAY SERVICE SCHEDULE

Sept. 1	Selichot	
(Saturday)	Reception & Musical Service	7:30 p.m.
Sept. 2	Cemetery Service	
(Sunday)	Temple Emanuel Section Mt. Lebanon Cemetery	11:00 a.m.



Sept. 9	Erev Rosh HaShana	
(Sunday)	Sanctuary Service	8:00 p.m.
Sept. 10	Rosh HaShana	
(Monday)	Service (Sanctuary)	10:00 a.m.
	Preschool Program (ages 2 to 5)	10:00 a.m.
	K-6 th Grade Program	10:00 a.m.
	Family Service (Beit HaT'fila)	2:45 p.m.
	Tashlich at Mad Max Lakeside	4:30 p.m.
	200 N Lakeside Drive, McMurray 15317	



Sept. 18	Kol Nidre	
(Tuesday)	Family Service (Beit HaT'fila)	6:45 p.m.
	Traditional Service	8:00 p.m.
Sept. 19	Yom Kippur	
(Wednesday)	Service (Sanctuary)	10:00 a.m.
	Preschool Program (ages 2 to 5)	10:00 a.m.
	K-6 th Grade Program	10:00 a.m.
	Beit Midrash	12:15 p.m. to 3:30 p.m.
	Family Service (Beit HaT'fila)	2:45 p.m.
	Afternoon Service (Sanctuary)	3:30 p.m.
	Including Yizkor Memorial and Neilah Service	

Please bring your pass with you for
Rosh HaShana and Yom Kippur Services.

**Pre-registration is required for
PRESCHOOL PROGRAMMING and
BABYSITTING on or before
Tuesday, September 4th**

(See page 11 for more information)

For more information call the Temple office, 412.279.7600
8 a.m. to 5 p.m. – Monday through Thursday
8 a.m. to 3 p.m. – Friday
or visit our Web site at www.templeemanuelphg.org.

HIGH HOLY DAY PASS INFORMATION FOR MEMBERS AND THEIR GUESTS

Erev Rosh HaShana, September 9, 2018 — Kol Nidre, September 18, 2018

TEMPLE MEMBERS

- Temple members will be receiving two (2) passes and High Holy Day information shortly in the mail. Dependent children do not require passes (24 years of age and under). Please bring your pass with you for Rosh HaShana and Yom Kippur Services.

COLLEGE STUDENTS AND SERVICE PERSONNEL

- Passes will be issued at no charge. (Please complete the Pass Request Form below.)

RELATIVES AND GUESTS OF MEMBERS

- **Affiliated**
To obtain passes for guests who are affiliated members in good standing with another congregation, **please bring, email or mail to the Temple Office** (at least 10 days before the High Holy Days) a document from their Temple indicating good standing and there will be no charge for passes.
- **Unaffiliated** (Please complete the Pass Request Form below.)
 - Unaffiliated Out-of-Town Guests*
\$100 per High Holy Day, per person
 - Unaffiliated In-Town Guests* (Includes the City of Pittsburgh & Suburbs of Pittsburgh)
\$250 per High Holy Day, per person

PASS REQUEST FORM MUST BE MADE IN WRITING OR IN PERSON.

PASS REQUEST FORM

Return this form to the Temple Office **no later than** Thursday, August 30, 2018 if you want us to mail your passes. Passes can be picked up until 2:30 pm, Friday, September 7, 2018.

Member Requesting Pass(es): _____

Address to Mail Passes: _____

Name and Address of Person(s) Unaffiliated

Out of Town Guest(s) \$100 per Holy Day per person:

In Town Guest(s) (living in Pittsburgh or Suburb of Pittsburgh) \$250 per Holy Day per person:

Enclosed check made payable to Temple Emanuel, Pass Request for \$ _____

If mailing, send to: Temple Emanuel, Pass Request, 1250 Bower Hill Road, Pittsburgh, PA 15243

TASHLICH and TACOS Is Back Again This Year!!! Monday, September 10th 4:30 P.M.

Join us at Canonsburg Lake (just off Rt. 19 South at McDowell Lane) for Tashlich. We'll sing songs and recite the Tashlich prayers as we symbolically cast our sins into the water (with bread crumbs), leave our old shortcomings behind, and start the New Year with a clean slate. After the service we'll gather at Mad Mex Lakeside to socialize and enjoy a buffet of light appetizers and mini-fish tacos.



While EVERYONE is welcome to join us at the lake for the service, space at Mad Mex is limited to 150 people. Please RSVP to 412.279.7600 or at www.templeemanuelpgh.org/event/tashlich2018 if you plan to come to Mad Mex . This year, the cost is \$5/adult (ages 16+); children are still free!

Parents & Teenagers

Begin The High Holy Days With A Mitzvah! Volunteer to Help with...

Temple's High Holy Days
Grades K-5 Children's Programs
10:00 to 12:00 a.m.

Rosh HaShana
Monday, September 10th
and/or Yom Kippur
Wednesday, September 19th

- ☆ Help provide a memorable experience of the High Holy Days for our children!
- ☆ It's easy! Everything is provided including clear instructions.
- ☆ Arrive at Temple at 9:30 am.

To volunteer, kindly contact the Education Office at
412-279-7600 ext. 214 or
torahcenter@templeemanuelpgh.org

NO LATER than Tuesday, Sept. 4.

We Need YOU!

Be a part of our Simchat Torah Celebration as we come to the last word in Deuteronomy and immediately begin again with the first words in Genesis. To participate in the service on **Sunday morning, September 30th** by reading a line of Torah, please contact Rabbi Jessica Locketz at jlocketz@templeemanuelpgh.org.



OWN YOUR OWN...

Have you been inspired by our High Holy Day prayer books, Mishkan Hanefesh? Would you like to have a set to use at home and at services? Place your order now through Temple to receive the discounted price of \$39/set (retail price is \$42 + shipping), and we will have them available for you in time for Rosh Hashanah.

Name: _____

I/we would like to purchase ___ sets of Mishkan Hanefesh at \$39/set.

Orders and payment (cash or check) are due to the office by Monday, August 20.

Also, did you know that Mishkan Hanefesh is also available on Amazon for your Kindle? Each book (Rosh Hashanah and Yom Kippur) is available for just \$9.99! We welcome you to choose this option and bring your Kindles to services this year!

ARE YOU COOKING FOR THE HOLIDAYS?

If you will be grocery shopping at Giant Eagle, please participate by buying your Giant Eagle gift cards here at Temple. When you buy Giant Eagle gift cards through our office, Temple receives 5% of every dollar spent -it costs you nothing and it costs Temple nothing. *That's right, nothing.* You spend the full face value of the gift cards and get the added *nachas* of knowing that you've provided much needed support to Temple's fundraising efforts. .

Other than groceries, also use the cards to pay for gas at GetGo, prescriptions and dry cleaning, and even beer at Market Districts! And, you can use them to buy hundreds of other gift cards for other businesses too. Don't forget you will receive Fuel Perks when you use your cards. With birthdays, weddings and home-improvement projects, it's the perfect time to stock up!

THANK YOU IN ADVANCE FOR YOUR PARTICIPATION!

HIGH HOLY DAY BABYSITTING REGISTRATION REQUIRED

Temple Emanuel once again is pleased to coordinate babysitting services for infants, ages 3 months and up to 2 years, during the morning services on both Rosh HaShana and Yom Kippur. **Please do not confuse this with the Preschool Programming we have scheduled for our 2 to 5 year old children.**

The number of babysitters hired is based on the confirmed number of children registered. Confirmed registration is required for admittance to babysitting by **September 4th**. No exceptions will be made.

For more information or questions, contact Torah Center, Temple Emanuel office, 412-279-7600.



BABYSITTING REGISTRATION FORM

Deadline is Tuesday, September 4, 2018

E-mail: torahcenter@templeemanuelpgh.org

Please print information:

Member's Name _____

Phone No. _____

E-mail Address _____

Relationship to Child _____

List name of child(ren) and select services needed for babysitting.

Child's Name _____

Age _____

Rosh HaShana: 10:00 a.m. _____

Yom Kippur 10:00 a.m. _____ 3:30 p.m. _____

Child's Name _____

Age _____

Rosh HaShana: 10:00 a.m. _____

Yom Kippur 10:00 a.m. _____ 3:30 p.m. _____

Child's Name _____

Age _____

Rosh HaShana: 10:00 a.m. _____

Yom Kippur 10:00 a.m. _____ 3:30 p.m. _____

Special information (i.e. allergies, medical conditions, etc.) _____

Please let the babysitters know where you will be sitting in the sanctuary.

HIGH HOLY DAY PRESCHOOL PROGRAMMING

Temple Emanuel's preschool holiday programming is for children ages 24 months up to 5 years (or not yet attending kindergarten) and is **offered during the 10:00 a.m. services** on both Rosh HaShana and Yom Kippur. The program includes special services led by Rabbi Locketz, holiday crafts, and play time. Parents are welcome to stay for the program or attend the services in the sanctuary.

So that we may best plan for assistants and materials, *please be sure to submit your registration by Tuesday, September 4th*. Thank you!

For more information or questions, contact the Education Office at Temple, 412.279.7600, or e-mail: torahcenter@templeemanuelpgh.org



PRESCHOOL PROGRAMMING REGISTRATION FORM

Please submit no later than Tuesday, September 4.

Send to: Temple Emanuel Preschool Programming
1250 Bower Hill Road, Pittsburgh, PA 15243

Please print information:

Member's Name _____

Phone No. _____

E-mail Address _____

____ Yes, I will be staying for the preschool program.**

____ No, I plan to attend the regular High Holy Day Services.

Please indicate the program(s) your child(ren) will participate in:

Child's Name _____ Age _____

Rosh HaShana: 10:00 a.m. _____ Yom Kippur: 10:00 a.m. _____

Child's Name _____ Age _____

Rosh HaShana: 10:00 a.m. _____ Yom Kippur: 10:00 a.m. _____

Child's Name _____ Age _____

Rosh HaShana: 10:00 a.m. _____ Yom Kippur: 10:00 a.m. _____

Special information (i.e. allergies, medical conditions, etc):

**If you plan to stay with your child, please indicate if you would be willing to help with the other children, in particular monitoring the craft activities.

____ Yes, I would like to assist with the program.

If you are attending the 3:30 p.m. services on Yom Kippur, babysitting only (no programming) for children ages 24 months to 5 years will be available. Please complete the babysitting form.

TEMPLE FAMILY MENSCHENINGS

SHALOM

A warm welcome goes to new members of our Temple family:

➤ **Alissa and Aaron Hirschl**

OUR CONDOLENCES ON THE FOLLOWING BEREAVEMENTS:

יהי זכרם ברוך

➤ **Sanford Lichtenstein**, father of Marcy Bernson, grandfather of Seth, Evan and Melissa Bernson (May 29)

➤ **Carol Baker**, Temple member and mother of Melanie Bleiweis, mother-in-law of Craig Bleiweis and grandmother of Alexa and Dustin Bleiweis (June 10)

➤ **Ruth Sajowitz**, Temple member and wife of the late Rabbi William Sajowitz (July 12)

➤ **Margaret Goldberg**, mother of Ted Goldberg (Carol), grandmother of John, David & Elizabeth (July 13)

א

MAZAL TOV מזל טוב

Births:

➤ **Micah Joe Finder**, great-grandson of Laryn & Moe Finder, born May 4, 2018.

➤ **Ailey Dorit Kaufman**, daughter of Carrie & Brian Kaufman, born June 4, 2018.

Marriage:

Marriage of **Alissa Sobel and Aaron Hirschl**. Alissa is the daughter of Andrea and Norman Sobel.

THANK YOU—TODAH RABAH:

Office Volunteers:

Lisa Katz, Flora Calgaro, Peggy Gold, Nancy Berkowitz, Ellie Bahm, Roberta Carr, Irene Luchinsky, Allen Beitman, Nan Simon, Stacy Tafeen, Penny Abrams, Mary Christine, Roz & Farrel Levine, Susan Hommel and Susan Konig

B'NEI MITZVAH



EMMA HICKS

On Friday, August 24, the Shabbat candles will be kindled by Jill Hicks. The pulpit flowers will be provided by Jill and Andrew Hicks who will share with Temple Emanuel in hosting the Oneg Shabbat in honor of their daughter, Emma, becoming a Bat Mitzvah. On Saturday, August 25, please join with the Hicks family as they host the Kiddush following Shabbat morning services.

Emma's mitzvah project is working with Animal Friends doing a food and supply collection drive at Temple and Bethel Park Petco. She also will be working with her Torah Center class making dog toys to donate to Animal Friends.

TEMPLE'S JUDAICA



Unique Gift Items for: B'nei Mitzvot, Art Work, Baby Gifts, Engagements, Weddings, Birthdays, Simchas, Hostess Gifts, Holiday Accessories, Books & Cards.

FREE CUSTOM GIFT WRAP

SUMMER HOURS BY APPOINTMENT

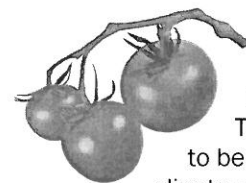
April Zaslau—412.279.3750
Rita Zolot—412.279.1020



Wedding anniversaries are a time to celebrate the joys of today, the memories of yesterday and the hopes of tomorrow. Best wishes to our Temple members who are celebrating their anniversaries in August:

Eric & Marion Barr
Mitchell & Lastenia Bober
Jonathan & Heather Bonime
Eric & Jennifer Bordenstein
Timothy & Karen Brogdon
Steven & Jamie Del
Darryl & Mindy Dorish
Robert & Selma Furst
Lee & Sandra Golomb
Robert & Lisa Goodman
Jason & Pauline Green
Mark & Sherri Kramer
David & Sarah Levinthal
Alan & Elaine London
Scott & Elizabeth Maidman
Roger & Lisa May
Kenneth & Stephanie McFerron
Paul & Linda Richardson
David Rosenberg & Davant Dodson-Rosenberg
Daniel & Lori Rothschild
Vyacheslav & Elena Rovner
Arnold & Sandra Ruben
Matthew & Beth Schwartz
Brian Szklinski & Beth Sweet
Richard & Lorie Turian
Jason & Jennifer Tyson
Howard & Mary Wolf
Marc & Carol Wolkoff
Andrew & Amy Zahalsky

TEMPLE'S GARDEN



A bounty of squash, tomato varieties and leafy greens is in Temple's front yard, to be harvested for SHIM clients and families. Special thanks to Temple member Deb Madaras and son Ari for donating all of the successful plantings!!

Events for August 2018

SUNDAY	MONDAY	TUESDAY	WEDNESDAY	THURSDAY	FRIDAY	SATURDAY
29 Minyan - 9:30 am	30	31	1	2	3	4 Torah Study - 9:00 am Shabbat Morning Worship - 10:30 am
5 Minyan - 9:30 am	6	7 ECDC Advisory Board and PTP Meeting 7:00 pm	8	9	10 Pre-Oneg - 5:45 pm Shabbat Worship Service - 6:30 pm	11 Torah Study - 9:00 am Shabbat Morning Worship - 10:30 am
12 Minyan - 9:30 am Bereavement Group 10:00 am	13 Meet Rabbi Rossoff at our Ice Cream Social - 7:00 pm	14 Coffee & Conversation to meet Rabbi Rossoff 10:00 am	15	16	17 TERMS meeting - 10:00 am Pre-Oneg - 5:45 pm Shabbat Worship Service - 6:30 pm	18 Torah Study - 9:00 am Shabbat Morning Service - 10:30 am
19 Minyan - 9:30 am	20	21 Worship Team Mtg. 7:00 pm	22	23	24 Pre-Oneg - 5:45 pm Shabbat Worship Service - 6:30 pm	25 Torah Study - 9:00 am Shabbat Morning Service & Bat Mitzvah of Emma Hicks - 10:30 am
26 Minyan - 9:30 am	27	28 Board Meeting 7:00 pm	29 Torah Center Kick Off Pool Party at Bower Hill Swim Club - 6:00 pm	30 ECDC Professional Development Day 9:00 am	31 Pre-Oneg - 5:45 pm Shabbat Worship Service - 6:30 pm	1 Torah Study - 9:00 am Shabbat Morning Service - 10:30 am Shabbat Family Hike - 3:00 pm Selichot - 7:30 pm



Monday, September 3rd

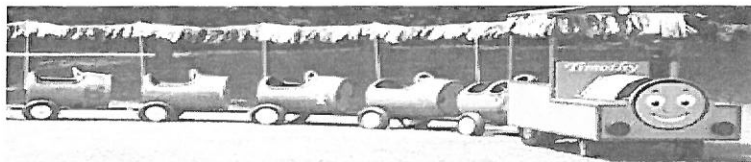
4:00 PM to 6:00 PM

Temple Emanuel of South Hills

Guests welcome!

Bring your friends and family—No charge

**There will be a BARBECUE, MUSIC, LAWN GAMES and
THE TRACKLESS TRAIN**



50/50 Raffle and more

**Just bring one non-dairy vegetarian side dish to share,
*(include list of ingredients for those with allergies).***

Temple supplies the hot dogs, burgers and soft drinks.

RSVP by August 29th to one of the following:

templemanuel@templemanuelpgh.org

<http://www.templemanuelpgh.org/event/ld2018>

**or 412.279.7600 with the number attending and
what you will be bringing.**

Do you ever feel like you don't recognize people at Temple events?

Are you looking to connect with other members?

Introducing Temple **SMALL GROUPS**....

SMALL GROUPS are forming over the coming months. The goal is for participants to ***form meaningful relationships*** with members who share similar interests and/or life stages. This is a wonderful way to meet members of the Temple community or strengthen established bonds.

Join a SMALL GROUP by filling out the form below and sending to Beth Schwartz at Temple Emanuel 1250 Bower Hill Rd, Pittsburgh, PA 15243 or on Temple's website at <http://www.templeemanuelpgh.org/community/small-groups>.

I am: (Circle **ALL** that apply)

Single Married Divorced Widowed Interfaith Family

I have: (Circle **ALL** that apply)

No Children Young Children Teenage Children Adult Children Grand Children

I'd be interested in meeting others for: (Circle **ALL** that apply)

Hiking Cycling Sharing Shabbat/Holidays Playing Board/Card Games
 Jewish Study Discussing Books Researching Ancestry Bowling
 Dining Out Dining In Activities Including Children Activities Not-including Children

Other activities I'd like to do with a SMALL GROUP...

I'd like to be in a SMALL GROUP with members at my life stage. We will decide what we want to do together.

Yes No

Name(s) _____ Age(s) _____

Email _____ Phone _____

Questions? Call Beth Schwartz, 412.877.5996, or Laura Young, 917.488.8995, or email TempleEmanuelSmallGroups@gmail.com.

An Evening of Celebration Honoring Rabbi Mark Joel Mahler

On June 3, 2018 we honored Rabbi Mark Joel Mahler on the occasion of his retirement from Temple Emanuel. It was a memorable evening as we celebrated and joined together to wish Mark and Alice 'mazel tov' for all that they have done for Temple over the last 38 years.

Our thanks to Susan Hommel and her committee who organized this event and also to those who participated with speeches and entertainment during this evening.

Many thanks to the Sponsors of the Gala. **The Gold Sponsors** were Nancy & Bill Berkowitz, Robin & Steve Hausman, Elaine & Alan London, Betty Jo Hirschfield Louik & Howard Louik, Marlene Naft, Joan & Ron Rothaus and Rikki Hommel & David Weisberg. **The Silver Sponsors** were Jill & Adam Brufsky, Climatech, Meredith & David Cohen, Laryn & Moses Finder and Lori & Daniel Rothschild. **The Patrons** were Carol & Michael Bleier, Lisa & David Dvorin, Andrea & Jeff Fitting, Peggy & Louis Gold, Carol & Ted Goldberg, Thomas Hollander, Leslie & David Hoffman, Rabbi Jessica Locketz & Larry Schwartz, Michelle & Pace Markowitz, Beth & Matt Schwartz, Lori & Bob Shure, Laura & Jeff Young, Amy & Andrew Zahalsky and April & Stanley Zaslau.

Our thanks also to those who put a greeting and/or ad in our beautiful Tribute Book designed by Kim Rullo.

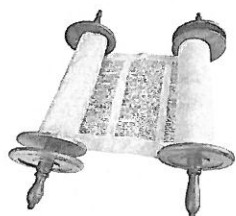
Proceeds from this evening went to the newly created Rabbi Mark Joel Mahler Rabbinic Chair Fund. This fund has been established to secure the financial stability of our congregation by funding the Senior Rabbi position in perpetuity.

Legacy Heritage

OnBoard™

Legacy Heritage OnBoard Program

Temple Emanuel has been selected as one of 15 Jewish organizations in the Pittsburgh area to participate in the Legacy Heritage OnBoard Program. The Legacy Heritage OnBoard Program is a 15-month program designed to strengthen and develop the skills of board members of Jewish organizations through skills-based workshops and personalized Jewish learning. The goal of the program is to nurture effective and dynamic lay leadership for the Jewish community. Temple Emanuel is grateful for being chosen to participate in the Legacy Heritage OnBoard Program and looks forward to sharing with the community how this program has positively influenced our organization. We are pleased to announce that Beth Schwartz has been selected as our OnBoard fellow. Beth's project will focus on creating small groups to promote relationships and connections within our congregation.



TORAH STUDY

Saturdays, 9:00 – 10:30 am

Our Shabbat morning Torah Study focuses on the weekly Torah portion. The session is built on the reading and translation of various passages from the Torah portion, traditional commentary and group discussion. No background in Hebrew or the Bible is necessary, only an interest in exploring the text.

Mark Your Calendars For 5779

September:

- 1 Selichot
- 2 Cemetery Service

Year beginning 5779:

- 9 Erev Rosh HaShana
- 10 Rosh HaShana
- 18 Kol Nidre
- 19 Yom Kippur
- 23 Erev Sukkot
- 24 Sukkot
- 30 Erev Simchat Torah

October:

- 1 Concluding Sukkot, Yizkor

December:

- 2 Erev Chanukah (1st Candle)

January:

- 21 Tu B'Shvat

March:

- 20 Erev Purim
- 21 Purim

April:

- 19 Erev Pesach (1st Seder)
- 20 Pesach
- 26 Concluding Pesach, Yizkor

May:

- 2 Yom Hashoah
- 9 Yom Ha'Atzmaut
- 23 Lag B'Omer
- Yom Yerushalayim

June:

- 8 Erev Shavuot
- 9 Shavuot, Yizkor

August:

- 10 Tisha B'Av

Yizkor Dates:

- Yom Kippur 10th of Tishri, Wed., Sept. 19, 2018
- Concluding Sukkot 22nd of Tishri, Mon., Oct. 1, 2018
- Concluding Passover (7th day) 21st of Nisan, Fri., April 26, 2019
- Shavuot 6th of Sivan, Sun., Jun. 9, 2019

From Iris Harlan, ECDC Director



Welcome ECDC Assistant Director!

I could not be happier in announcing that ECDC now has an Assistant Director, and better yet, that the Assistant Director is Ellen Drook.

Many of you know Ellen as a Temple member and as an ECDC Teacher. Ellen in fact grew up at Temple Emanuel where she celebrated her Bat Mitzvah and those of her two daughters, Cosette and Cara.

Ellen taught at ECDC for the past four years and proved herself to be a most dedicated and talented teacher. In 2017 she was in fact the Pittsburgh recipient of the esteemed Grinspoon Award for Excellence in Jewish Education.

Even more important, Ellen is loved by her peers. As ECDC adopted electronic formats for communication, Ellen was the go-to-person for help with technology. At all hours of day or night, she could be found making instructional guides for peers or posting updates on her classroom blog.

The Assistant Director position is part-time, but Ellen works fast and hard. In her first week on the job, she converted the annual multi-paged welcome packet from hardcopy to digital! This is the first of many ways in which Ellen will help ECDC to become more efficient and user-friendly. **Welcome Ellen!**

Social Action Project

Temple Emanuel Early Childhood Development Center and Social Action are partnering on a campaign to raise funds for the Humanitarian Respite Center of Catholic Charities of the Rio Grande Valley.

How did we choose this campaign? We were inspired by a "sister Temple Emanuel", located in McAllen, Texas on the border of Mexico and a few miles from the respite center. Also known as Temple Emanuel of Rio Grande Valley, it is located a few short miles from Catholic Charities and partners to raise funds for the respite center. The respite center opened in 2014 and with the help of volunteers the center has provided assistance in form of food and clothing to over 100,000 immigrants and refugees. We learned of these efforts on the web site of the [Religious Action Center of Reform Judaism](#).

In Pittsburgh we do not come face-to-face with the humanitarian crisis at our border. We therefore welcome this opportunity to partner with Temple Emanuel of McAllen, Texas.

Mike Blum, the Chair of their Social Action Committee sends this message: *We have received financial gifts from more than 70 congregations across the USA which has been astonishing, and a true demonstration of tikkun olam. An equal or greater number have sent truckloads boxes of toiletries, diapers, wipes, clothing items, blankets and small toys which has been a logistical challenge for our congregation. Thank you and all of your fellow members. It is good for the heart to give for those who are in need, regardless of where they come from or why they're here.*

Please use this link <http://www.templeemanuelpgh.org/event/helptexas/> to **donate by August 31, 2018.**

COLLEGE CONNECTION



High School Graduates and College Students attending college or other educational programs - please complete this form with your e-mail and address for the 2018-2019 school year so that we can stay in touch with you. Good luck to you at school.

If you participated during the last school year, you still need to send in this form.

PLEASE PRINT ALL INFORMATION:

Family Name _____

Student #1 Name _____

School _____

Mailing Address (as of Sept. 2018)

Email _____

Phone Number _____

Student #2 Name _____

School _____

Mailing Address (as of Sept. 2018)

Email _____

Phone Number _____

Return to:
 Temple Emanuel, Attention:
 College Connection
 1250 Bower Hill Road
 Pittsburgh, PA 15243
 or email this information to
templeemanuel@templeemanuelpgh.org.

Bereavement Support Group

Next Meeting, Sunday, August 12
10:00 am

Led by **Jamie Del, MS, NCC, LPC** and
Naomi Pittle, LCSW

Jamie Del is a Licensed Professional Counselor and National Certified Counselor. Over the past twelve years, she has worked to help people experiencing a variety of issues, including grief, depression, and trauma. Jamie holds certifications in School Counseling and Weight Loss from a Mental Health Perspective. Jamie is also trained in a trauma therapy, Eye Movement Desensitization Reprocessing (EMDR). Jamie currently provides counseling at her Bridgeville practice, Pittsburgh Counseling Solutions.

Naomi Ruben Pittle, grew up near Buffalo, NY and earned a Master's in Social Work from the University of Pittsburgh. She worked as a Licensed Clinical Social Worker for the Veteran's Administration Health Care System for 14 years and is currently employed as a teacher's aide in the Mt. Lebanon school district.

If you plan to attend the meeting, please RSVP to Leon at leonsteineresa@verizon.net.

The Bereavement Group welcomes previous and newly bereaved adults to our monthly support group. Everyone grieves differently and there is no right or wrong way to grieve. Support often can be very helpful knowing you are not alone. Meet others who have lost their parents, siblings, partners or children and find hope. All are welcome.

In addition, the past and current members of this group have organized monthly dinners for anyone who has lost a loved one. Please contact Rima Wolfe at 412.956.5738 for times and to make a reservation.

Temple Emanuel's Brenda & Larry Miller Memorial Caring Community



A place where we get help
when we need it,
and give help when we can.

For more information contact Sara Frey at
slfrey@comcast.net or 412-835-1783.

Knitting & Crocheting Circle of Friends

Welcome back after a relaxing summer.

Meeting on
Sunday, September 16th
10:00 am – noon

Meeting outside of
Anthropologie at the Galleria.
All are welcome to participate
in this Circle of Friends.

Now we are beginning our
Fall Challenge once again.

Please consider knitting or crocheting scarves, hats and gloves for SHIM's coat drive AND lap blankets and shawls for Bridgeville Rehab and Care Center..

All new knitted or crocheted fall items will be accepted from October 1st through December 1st. Please place your completed item(s) in a clear plastic Ziplock bag to the drop off point in the community room at Temple.

From Bob Konig, TERMS Chair

Temple Emanuel Retirees in Mitzvah Service

Come to TERMS with your ideas, skills & passions.
It's a Good Time to Get Involved!

TERMS meets the 3rd Friday of the month at 10 am
ALL WELCOME

Now that you, as a retiree, can truly call your time your own, this may be your ideal opportunity to make a valuable contribution to your Temple community and to yourself.

Temple Emanuel's year-round Mitzvah program (TERMS) is operated by the retirees, and nearly retired, men and women of Temple Emanuel. This successful team has participated in many highlights at Temple which were of our choosing.

If you are a Temple Emanuel member who is retired, or contemplating retirement in the next year and would like to experience retirement on your own TERMS, please contact Bob at bobkonig@gmail.com. Each new member enriches us, and increases our capacity to perform good deeds on behalf of the Temple Emanuel family. Do it today, while you are thinking about it. You won't be sorry.

DONATIONS TO TEMPLE FUNDS

Pay tribute to someone special and provide much appreciated financial support for Temple by donating to a Temple Fund.
(Minimum donation of \$10 will be accepted for all funds unless otherwise indicated below.)

#21 CAPITAL CAMPAIGN FUND

To fund & bring to completion the renovation & expansion project.

#23 CEMETERY BEAUTIFICATION FUND

Enhances Temple Emanuel's Cemetery beyond perpetual care.

DONOR

Carole & Jesse Mantel
Judi Rudoy
Joan Scheinholtz
The Myers Family

IN MEMORY

Eric Cantor
Mollie Ponyman
Sylvia Russell
Bonnie Myers

#6 SHELLY COHEN CLASSROOM FUND

For classroom refurbishment

DONOR

Sam Puterman

IN MEMORY

Mark Puterman

#7 RICHARD A. COHN & CHARLOTTE COHN MEMORIAL SCHOLARSHIP

Provides an annual college freshman grant to a deserving student(s) who are a Temple member & whose accomplishments & character merit this award.

#20 THE PETER & CHARLOTTE COOPER FAMILY GARDEN

Supports the planting & upkeep of the garden in the courtyard.

DONOR

Ruben Abramovitz

IN MEMORY

Arlene Abramovitz
Bella Abramovitz

#19 DISKIN MUSIC FUND

Presents innovative and special music and music education programs through religious school and Temple events, as well as events open to the community.

DONOR

Barbara Trachtenberg

IN HONOR

Rabbi Mahler

#14 GENERAL FUND

Supports the most basic and fundamental purposes of our synagogue.

DONOR

Temple Emanuel Board

IN MEMORY

Sanford Lichtenstein
Carol Baker
Lea Davidson
Esther Leipzig
Dr. Florence L. Marcus
Della Marcus Friedland
Dr. Charles M. Friedland
Stanley Simons
George McCaa
Sanford Lichtenstein,
father of Marcy Bernson
Sanford Lichtenstein
Shelly Keyser
Barney Snyder
Sanford Lichtenstein,
father of Marcy Bernson
Sanford Lichtenstein,
father of Marcy Bernson
Sanford Lichtenstein,
father of Marcy Bernson

Mary Cothran
Robin & Rick Minutello

Ronna & Jeff Robinson
Barbara Greenberg

Betty Jo & Howard Louik
Ruth Novice
Karen & Tony Captline
Julie Cohen & Brian Neft

Nancy & Dan Garfinkel

Judi & Eric Kline

Nancy & Michael
Lichtenstein
Leslie & David Hoffman

Marvine Lichtenstein
Charlotte Levin

DONOR

The Dvorin Family

IN HONOR

The Torah Center teachers for a great year
For the Madrichim for all they do
Kathy Ginsburg's service as a Torah Center teacher
Mindy Spitzer's service as a Torah Center teacher
Sara Frey's service as a Torah Center teacher
Paula Spock's service to Torah Center
Rabbi Locketz's Torah Center service
Henry Barnes becoming a Bar Mitzvah
Maya Leyzarovich becoming a Bat Mitzvah

Castagnari Family Charitable Fund of the Pgh. Foundation
Dot & Neal Pollon

Ellie Bahm

Ruth Novice

Cheri & Joel Schwartz

Constance Mayer

David Weisberg's support
Their daughter, Jill, being Confirmed
Susan Hommel's outstanding work on the Retirement Gala
Marriage of Shelly & Bob Cohn's grandson
Jarah Eger becoming a Bat Mitzvah
In appreciation of
Rabbi Mark Mahler &
Rabbi Jessica Locketz

#8 JEANNE GLASSPOOL NURSERY SCHOOL FUND

Provides special equipment, repairs & maintenance of the indoor gym.

#9 MURRAY GOLD LIBRARY FUND

Purchases books, supplies and equipment for the Library. To purchase a book, the minimum donation is \$36).

DONOR

Paula & Marty Altschul &
Abby, Bob & Josh Brashler

DONOR

Judy Nesvisky

IN MEMORY

Sanford Lichtenstein

IN HONOR

Paula & Marty Altschul

#17 HOLOCAUST MEMORIAL GARDEN

Supports the planting & upkeep of the garden in the courtyard area remembering the six million Jews lost during World War II and those who survived.

DONOR

Lynn & Harvey Rubin

IN MEMORY

Johanna Zimmerman

#26 JACOB'S LADDER FUND

Provides programming, including open forums for our community, concerning youth issues.

#28 MARTHA KLEIN LOTTMAN FAMILY FUND

Provides matching monies for Jewish Early Childhood Education Initiative & related projects.

DONOR

The Gurell Family

IN MEMORY

Dvorin's Jewish dog,
Buddha

#22 MARK LEVIN SCHOLARSHIP FUND

Provides scholarships to students for Torah Center on the basis of demonstrated financial need.

DONOR

Sandra Levin

IN MEMORY

Father-in-law, Harry Levin

#5 RABBI LOCKETZ'S DISCRETIONARY FUND

Assists the Rabbi in programs helpful to the pursuit of her work & in the enrichment of congregation & Jewish life, both programmatically & philanthropically.

*#4 RABBI MAHLER'S DISCRETIONARY FUND

Assists the Rabbi in programs helpful to the pursuit of his work & in the enrichment of congregation & Jewish life, both programmatically & philanthropically.

DONOR

Deborah Mottsmann Rosen

DONOR

Rabbi Jeremy Weisblatt
Dot & Neal Pollon

IN MEMORY

Mother, Phyllis Mottsmann

IN HONOR

Rabbi Mahler
Their daughter Jill becoming Confirmed
Rabbi Mahler's Retirement

#3 RABBI MARK JOEL MAHLER RABBINIC CHAIR

To secure the financial stability of our congregation by funding the Senior Rabbi position in perpetuity.

DONOR

Barb & Eric Udren

DONOR

Roz & Farrel Levine
Ruth Elder
Sally & Leonard Gehl
Rabbi Mark & Alice Mahler
Rose Field
Robin & Rick Minutello & Family

IN MEMORY

Martha Berman

IN HONOR

Rabbi Mark Joel Mahler
Rabbi Mark Joel Mahler
Rabbi Mahler's retirement
Donation
Rabbi Mark Joel Mahler
Rabbi Mark & Alice Mahler receiving Temple's Manny Award
The Rothaus Family receiving Temple's Dor L'Dor Award

#10 LARRY & BRENDA MILLER MEMORIAL CARING COMMUNITY

Facilitates care to members of our congregation in times of crisis.

DONOR

Marianne & Scott Faber

IN HONOR

Meg Abram's Distinguished Service Award

#4 SENIOR RABBI'S DISCRETIONARY FUND

Assists the Rabbi in programs helpful to the pursuit of his work & in the enrichment of congregation & Jewish life, both programmatically & philanthropically.

***As of July 1, 2018, donations are no longer accepted to The Rabbi Mahler Discretionary Fund. Going forward, such donations can be made to "The Senior Rabbi Discretionary Fund."**

**DONATIONS TO
TEMPLE FUNDS**

#15 PRAYERBOOK FUND

Purchases & maintains books for worship
(Prayerbooks—\$36; Bibles—\$55).

DONOR

Penny & David Abrams

IN MEMORY

Marjorie Armour
Lena Abrams

DONOR

Penny & David Abrams

IN HONOR

Birth of Laryn & Moe
Finder's great-grandson
Confirmation of Madeline
Elizabeth Dorish,
granddaughter of Penny
& David Abrams

Laryn & Moses Finder

**#11 REBECCA REVSIN MEMORIAL
FUND**

Supports Temple's Torah Center through the
purchase of special materials & equipment.

**#1 RABBI WILLIAM SAJOWITZ
ENDOWMENT FUND**

Support, enhances & ensures special programs
for our youth & the entire congregation.

DONOR

Linda & Mark Silverman

IN MEMORY

Nathan Smiga

**#16 NAN SIMON ECDC
FUND**

Provides ECDC staff training and
technology in the classroom

**#2 LOUISE "SISSIE"
SPERLING**

ENDOWMENT FUND

Enriches our operating budget & celebrates
your commitment to our future

DONOR

Ellie Bahm

IN MEMORY

Sanford Lichtenstein

DONOR

Ellie Bahm

IN HONOR

Tyler Legum graduating
from high school,
grandson of Ruth Novice

WALL OF REMEMBRANCE PLAQUES

(Plaques are \$360, \$750, and \$1500)

A wonderful way for a group of friends or an
individual to recognize a special birthday,
anniversary or any other occasion.

#12 EILEEN WOLF MEMORIAL FUND

Provides special treats for
Torah Center students at holidays

DONOR

Barbara & Milt Wolf

IN HONOR

Byron Rose's 80th birthday

**#18 YAHRZEIT REMEMBRANCE
FUND**

Purchases new items & restores &
refurbishes our sanctuary and social hall.
Also for ongoing operational expenses.

DONOR

Colleen & Eric Frankel
Penny & David Abrams
Scott Kallick
Rose Field

Bernice Frank

Naomi & Howard Pittle
Steven Erenrich
Laryn & Moses Finder

Layla Ballon

Rena Schake
Shirl S. Unatin

Roz & Ed Friedman
Dorothy & Neal Pollon

Rosalind & Farrel Levine
Judy & Joel Safier
Joyce & Howard Simons

Lisa, Morton & Amy Wintner

Judy & Jon Friedman

Carol Rosenberg Spolter

Linda & Paul Richardson

Chuck, Lauren & Josh Snyder

Sandy Golomb

Robert A. Cohen

Ellie & Ron Solomon

Paul Herman

Betty Jo & Howard Louik

IN MEMORY

Ruth Friedman
Rita Handmaker

Irene Kallick

Rebecca Field,

mother-in-law

Samuel Kamisar,

beloved father

Carl Pittle

Louise Erenrich

Stella Sax

Dora Borgenicht Finder

Esther Gusky,

beloved mother

Stephen Schake

Richard Stein,

beloved brother

Marion Marcovitz

Gerald Pollon

Beatrice Pollon

Ruth Newhouse

Allen Safier

Lois Simons

Morris Favis

Father, David Friedman

Muriel Bloch Rosenberg

Bernard Herman

Barney Snyder

Erwin Rubenstein

Mary Cohen

Lisa Rae Solomon

Martin Herman

Myron Louik

YAHRZEIT PLAQUES

DONOR

Howard Miller

IN MEMORY

Brenda Miller

**# 27 ZOLOT ISRAEL
ADULT SCHOLARSHIP FUND**

Provides a yearly scholarship to help offset the cost
of a Temple sponsored trip or Reform Movement Missio
to Israel for one adult member of
Temple who requires financial assistance.

**HONORING THEIR MEMORY
Families of the Following Loved Ones
Will Honor Their Memories and Mark the
Occasion of Their Family**

August 3/ 4 Harry M. Blockstein,
Celia Caplan, Beatrice Carpe, Esther
Cohen, Harry Gorman, Albert Gusky,
Beverly LeWinter, Darlene Blank, Lillian
Caplan, Albert Felder, Marie Fellman,
Jacob Presser, Al Rubenstein, Jack
Steiner, Abbey Auffenberg, Lynn Katz,
Robert Lumish, Elliot Marcus, Benjamin
Plotkin, Ruth Stein, Bessie Baker,
Margaret Del, Howard Protas Freed, Rita
Freed, Meyer Handmaker, Jamie Steve
Simon, Rose Weinberg, Jacob Budin,
Julius Field, Samuel Harris, Allen M.
Hoffman, Esther Horelick, Edward
Mottzman, Isadore Abrams, Nathan
Lightman, Beatrice Rubenstein, Arnold
Schilit, Gerdie Smiga, Robert Solock,
Albert Brownstein, Maxine Hoffman,
Ruth Kupperman, Jerry Light

August 10/11 Mary Plung, Robert
Vatz, Eunice Barnes, Harry M. Karp,
Emma Wolf Loeb, Sheldon Sax, Ruth

Erenrich, Arnold Faber, Albert Fine,
Bessie Goodman, Martin Marcovitz, Edith
Shapiro. Arthur Friedman. Ivan

Landman, Minnie Miller, Rae Rosenthal,
Mayme Roth, Matt Rothman, Elaine
Tropp, Clara Udren, Harry Whiser, Ken
Winograd, Geraldine Berger, Paul Green,
Barbara Grice, Fannie Katz, Ruth Daniels
Muehl, Sara Myers, Milton Slavkin, Al
Dresner, Celia Grupp, Bertha Hirschfeld,
Victoria Levitt, Bernie Roth, Frieda Ruth
Schwartz, Lily Shear, Mildred Lupovitz,
Edna Perlstein

August 17/18 Jerome Baskin, David
Berman, Shirley Greenberg, Mae
Kaufman, Gerd Leston, Samuel Salut,
Harriet Berk, Ann Gold Cooper, Herbert J.
Friedman, Samuel Kindler, Benjamin
Frank, Gertrude Heeter, Morris Pollon,
Lena Erenrich, Ruth Ptacek, Sue Tatich,
Harry Hoffman, Otto D. Kent, Mark Levin,
Henry Lightman, Bernice Moskowitz,
Rose Lubell Stolzer, Sarah Amster,
Rosalyn Blumberg, Ruth Brufsky, Peter
Cooper, Richard Hutchinson, Bernard M.
Levin, Ruth A. Mates, Judith Rodney,
Esther Rosin, Abe Leonard Trachtenberg,
Ida London Berke, Rose Breman Grass,
Pearl Stelzer, R. Patricia Spector, Gloria
Weiss

August 24/25 Dorothy Kopelman
Cohn, Charlotte B. Cooper, Gloria Fine,
Grace Fivars, Herbert M. Kohn, Sayde
Skirble Miller, Aaron Natbony, Samuel
Routman, Harry Cooper, Sandy
Dickinson, Lillian Hochman, Josef Kiss,
Ruth G. Polak, Diana Stern, Meyer
Goldblum, Sean Sion Rasmussen, Harold
Wintner, Janice Burdick, Jeanette
Herman, Phyllis Kindler, Joseph Moidel,
Carol Rothaus, Sidney Saul, Abe Shore,
Pearl Canter, Mildred Kaufman, Leonard
Levick, Anna (Sis) Samowich, Marc A.
Goldberg, Louise Kepcia, Elyeh Khalili,
Rose Linder, Edward Pearlstein, Barbara
Taback

August 31/September 1 Doris L.
Clateman, Charna Fabricant, Rose
Friedman, Elizabeth Goldstein, Mildred
Press, Jean Schechter, Sidney H.
Weinstein, Richard Goodman, Martha
Hirsch Green, Morris Haffner, Brett
Morgenstern, Melvin Shapiro, Gail
Silvert, Marvin Williams, Sidney Farber,
Ronnie Friedken, Rebecca Goldblum,
Andrew Morrison, Sarah Rafael, Richard
J. Blattner, Albert Bloom, Ed Cohen, Isaac
Konig, Jacob Libenson, Dorothy Chosky,
Doris Clateman, Sam Garfinkel, Anne
Sadler, Elizabeth Schiffman, Judith
Adelsheim Cano, Jack Rorick, Alice D.
Safier, Virginia C. Steinberg, Bessie
Cooper Wice

DUPLICATE BRIDGE

Temple Emanuel

1250 Bower Hill Road
Mt. Lebanon

12:00 P.M.
EVERY WEDNESDAY

TEMPLE'S SOCIAL HALL



Have fun and meet new people while playing the world's greatest card game!

Master Points awarded

Bring a Partner or Match Up at Game
\$6.00 per person

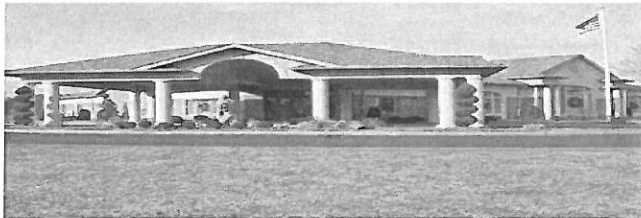
For Game Details & Information

Call: Darlene Mannheimer 412.343.0419

Or E-mail: darlenedlm@aol.com



American Contract Bridge League



William
SLATER II
Funeral Service

- Serving the Jewish Community with Traditional Jewish funerals
- Specially Developed Tabarah Room with Mikva facilities for Chevra Kadisha
- Accommodations for Shomer
- Guaranteed advanced funeral planning

Locally owned & operated
1650 Greentree Road – Pittsburgh, PA 15220
412.563.2800 – Fax: 412.563.5347
Serving Scott Twp., Greentree, Carnegie, Mt. Lebanon,
Upper St. Clair and Bethel Park

Pittsburgh's Newest Funeral Home



Temple Emanuel Kids: Have a great summer at JCC Day Camps!

June 18-August 10

Day camps for kids ages 2 to grade 8
CIT Leadership: grades 7-10
Counselors age 16 and over

Member and non-member rates available

Mention
this ad and receive
a FREE post-camp
summer J-Day

**JCC
PGH**

Contact Jason Haber for more information:
jhaber@jccpgh.org
412-278-1782

JCC of Greater Pittsburgh-South Hills
345 Kane Boulevard
Pittsburgh, PA 15243 • JCCPGHdaycamps.com

Inscribe a plaque and leave your message on

“THE WALL OF REMEMBRANCE”

(Plaques are \$360, \$750, and \$1500)

A wonderful way for a group of friends or an individual to recognize a special birthday, anniversary, or any other occasion.

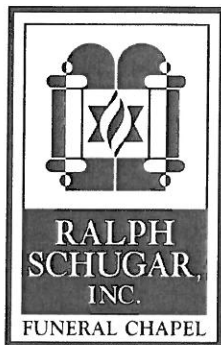
Contact Temple Office, 412.279.7600.



Helping you
through life's
changes &
challenges

JFCS

5743 Bartlett Street • Pittsburgh, PA
info@jfcspgh.org • 412.422.7200
jfcspgh.org



SHARON RYAVE BRODY

Owner and President • Licensed Funeral Director

Temple Emanuel Member

**GUARANTEED ADVANCE
FUNERAL PLANNING**

sharon.brody@schugar.com
412.621.8282 • 888.621.8282
FAX 412.621.5225
5509 Centre Avenue • Pittsburgh, PA 15232

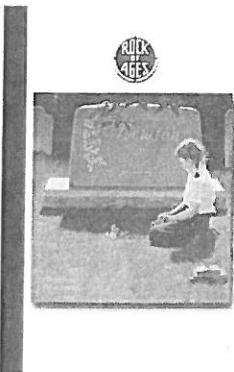
ROSEMARIE CARFAGNA AU

Licensed Funeral Director and Supervisor

www.schugar.com

Like us on Facebook: Ralph Schugar Chapel, Inc.

Fresh! Personalized! Creative!
From brisket to bruschetta, rugelach to risotto,
poached salmon to poached pears...
Temple Emanuel Catering
Kosher-style catering for all Temple occasions
Melinda Freed, Catering Manager
412.279.7600/ melindafreed@msn.com



Urbach Memorials

Heath Peterson

5505 Centre Avenue
Pittsburgh PA 15232
Office: 412.421.8655
Fax: 412.421.2292
Heath@UrbachMemorials.com

www.UrbachMemorials.com
www.RomeMonuments.com



**Five Star
Professional**
A Select Award by
Pittsburgh Magazine
Honoring Top
Realtors for Overall
Satisfaction

JUDY NESVISKY
Certified Residential
Specialist

I'll contribute \$250.00 to TEMPLE
EMANUEL, in your name, when you buy
or sell a home with me.

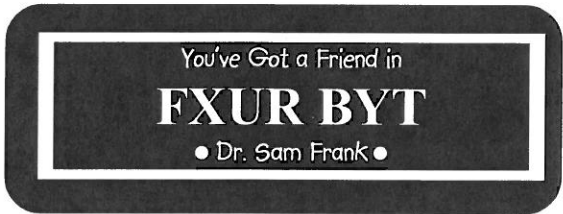


RE/MAX

CSI REALTORS®

(412) 833-0900 x2531
(Cell) (412) 551-4480

judynesvisky@yahoo.com



Dr. Samuel Frank

Orthodontist | Board Certified



For all ages

Mt. Lebanon Office

455 Cochran Road Pittsburgh, PA 15228

Tel: 412.561.4561

www.samfrankorthodontics.com

An Invisalign Preferred Provider



rhaina
Taylor
PHOTOGRAPHY

Bar & Bat Mitzvah
Photographer



www.rhainataylor.com ~ 412.916.1374

TEMPLE EMANUEL of South Hills

1250 Bower Hill Road
Pittsburgh Pennsylvania 15243-1380
(412) 279-7600 FAX (412) 279-7628
website: <http://www.templeemanuelpgh.org>

ADDRESS SERVICE REQUESTED

Interim Rabbi: Donald B. Rossoff, D.D., R.J.E.
Rabbi & Director of Education: Jessica Locketz, R.J.E.
Rabbi Emeritus: Mark Joel Mahler, D.D., M.A.H.L.
Executive Director: Leslie Hoffman
Early Childhood Development Center Director:
Iris Harlan, M.Ed.
Bulletin Editor: Linda Friedman Frankel
President: David Weisberg
V. President: David Rullo
V. President: Beth Schwartz
V. President: Lisa Steinfeld
V. President: Jeffrey Young
Financial Secretary: David Hepps
Treasurer: Tracy Barnett
Treasurer: Jason A. Green
Secretary: Mary Cothran

*deceased

US Postage
PAID
Pittsburgh, PA
Permit #2207

TIME VALUE

Say Hello!

Come to meet Rabbi Rossoff & welcome him to Temple!



Monday, August 13
7-8 PM at Temple
All-Ages Ice Cream Social



Tuesday, August 14
10AM at Temple
Coffee & Conversation

And of course...
Every Friday in August
Wine & Cheese Pre-Onegs at 5:45PM before our
6:30 PM Shabbat Services

Please RSVP to the office at templeemanuel@templeemanuelpgh.org or 412-279-7600 for the Ice Cream and/or Coffee, so that we'll be sure to have enough refreshments for all.
