



T'FILA תפילה

Babysitting available during services.
Call 412.279.7600 to make arrangements.

November 4

Pre-Oneg—5:45 pm

First Friday Service—6:30 pm

November 5

Torah Study—9:00 am

Noah, Genesis 6:9-11:32

Shabbat Morning Service—10:30 am

Cyrus Jonathan Khani, Bar Mitzvah

Sunday, November 6

Morning Meditation—9:00 am

Morning Minyan—9:30 am

November 11—7:30 pm

Kol Emanuel Shabbat Service

November 12

Torah Study—9:00 am

Lech Lecha, Genesis 12:1-17:27

Shabbat Morning Service—10:30 am

Young Family Havdalah—6:30 pm

Sunday, November 13

Morning Minyan—9:30 am

SOUTH HILLS TORAH WEEKEND

Guest: Rabbi Gershom Sizomu
"Under the Same Universe"

November 18 at Temple Emanuel

Pre-Oneg—5:45 pm

Shabbat Worship Service—6:30 pm

November 19

At Beth El Congregation

Shabbat Morning Service—9:15 am

Vayera, Genesis 18:1-22:24

Kiddush luncheon, Q & A to follow

At South Hills JCC —7:00 pm

Dessert Reception & Musical Havdalah

Sunday, November 20

Morning Meditation—9:00 am

Morning Minyan—9:30 am

Tuesday, November 22—7:30 pm

Annual Interfaith Thanksgiving Service

—Good Shepherd Lutheran Church

November 25—7:30 pm

Shabbat Worship Service

November 26

Torah Study—9:00 am

Haye Sarah, Genesis 23:1-25:18

Shabbat Meditation—10:00 am

Shabbat Morning Service—10:30 am

Sunday, November 27

Morning Minyan—9:30 am

Bulletin

1250 Bower Hill Road Pittsburgh, PA 15243

<http://www.templeemanuelpgh.org>

Vol. 19 #3 – 10 issues

November 2016 Tishrei-Cheshvan 5777

From Rabbi Mark Joel Mahler

Next Year in Jerusalem!

There is so much to love about our new High Holy Day Machzor, *Mishkan HaNefesh*. One of my many favorites comes at the end of N'ila, concluding Yom Kippur with a *T'kiah G'dolah* and *L'Shana HaBa'a b'Yerushalayim*, "Next Year in Jerusalem." This exhortation has concluded the Passover Haggadah for centuries. All hail once again to Reform Judaism for placing this exhortation at the end of the High Holy Days. Last month, it reminded me that I've promised a Temple Emanuel Mission to Israel in 2017.

A year ago, when I floated the idea of two Temple missions to Israel, one in the summer of 2016 and other in fall of 2017, more people expressed interest in the latter. Yes indeed, Israel in the fall is temperate and beautiful. So that's what I'm now planning for 2017.

First, some things changed between our 2014 mission and planning a mission for this past summer. We now need a minimum of 15 people because this is the number of people that hotels in Israel require to book rooms at a group rate. Similarly airlines now have a minimum for group bookings. But these are minor details. Nothing has changed for the major details.

For first timers or veterans, the itinerary includes as many of the spectacular highlights of Israel that we can pack into ten to twelve days. We'll begin in Tel Aviv for two nights, then to the north and the Galilee for two nights, and then devote the remainder of our time to Jerusalem. Jerusalem defies description. What Jerusalem is can only be grasped and appreciated by experience. Jerusalem especially is why I promise you the most amazing and inspiring trip of your life.

One example of how inspiring Israel can be.... Stuart and Rita Zolot were so moved by our 2014 mission that they created a special fund at Temple to help people who had shied away from going on Temple's Israel Missions previously because of cost. The Zolot Fund will provide a subsidy for one person up to \$2000 or for a couple up to \$3000.

I hope you're interested. Let me know: 412-279-7600/
ravmayim@gmail.com. Sometime in January, Alice and I will be hosting a meeting in our home for everyone who is interested in the mission. Date and time to be announced. I look forward to hearing from you.

From Rabbi Jessica Locketz, Educator

Thoughts of Summer??

The temperature is falling. It is time to dig out scarves, gloves, hats and heavy coats...and yet, I am thinking about summer. In particular, I am thinking about next summer and the opportunity to go to camp. Yes, I do mean the type of summer camp filled with dirt, mosquitoes, typical camp food, and lots of sunburn. But I also mean the kind of camp that includes *Maccabiah* (color war), *Gaga* (Israeli dodgeball), Shabbat...a Jewish summer camp experience that is fun but also fosters Jewish identity and connection.

If you have ever attended summer camp, you understand how all-encompassing the experience can be. As a child, the lasting memories of fun-filled days are what kept me going from one summer to the next. My years were divided into two parts: "camp time" and "waiting for camp time." Ah...the days of summer when spent at camp are truly awesome.

Many of our Temple Emanuel kids already know the joy of the summer camp experience. For those who have yet to discover it, I hope that this will be the summer to experience summer camp. And, I might add, not just *any* summer camp – but *Jewish* summer camp.

I grew up attending a Jewish summer camp in a small town called Oconomowoc, Wisconsin. Believe it or not, that is a place where Judaism thrives. It makes me smile when I think of all the friendships that I made there that have endured to this day. I still laugh when I remember how much fun we had together. The memories of those days will be with me always.

I am most certainly an affiliated Jew because of my time at camp, because of my experiences in the great outdoors. Jewish summer camp is the way to make Jewish kids stay Jewish as adults.

That is why I will be spending time next summer on the faculty of URJ (Union of Reform Judaism) Camp Harlam, our regional URJ camp on the other side of the state, in the Pocono Mountains. I believe in the power of camp – and I know what an impact it has had on my life. It is my hope that many of you will send your children to camp this summer and allow Jewish camping to impact your (and their!) life as well.

Jewish summer camps come in all shapes and sizes. The options are endless depending on your child's interests. I am happy to help determine which camp is best for your family. And if you have not yet chosen a camping experience for your children, I hope you will consider sending them with me to Camp Harlam.

There is an upcoming opportunity to learn more about this camp that I love. **Camp Harlam director Aaron Selkow will be here at Temple on Sunday, November 13th** (watch your emails for more details) to share more about the adventure that awaits us at Camp Harlam this summer.

Jewish Summer Camp is a great experience... I look forward to sharing it with you and your children.

From David Weisberg

President's Message



The following is my speech given on Yom Kippur, October 12, 2016:

Three numbers I'd like for you to remember – 14 million, 520 and One. So why are these important? And more importantly, why are they significant to you? Keep these numbers in mind, 14 million, 520 and One, as hopefully I will be able to give you something to think about.

First, let me introduce myself to you. I am David Weisberg. I am proud to be the current President for Temple Emanuel. Some of you may know me as the husband of my beautiful wife Rikki Hommel. Others of you may be connected to me as the son-in-law of Suzi and Richard Hommel. For those long-time Pittsburghers, my parents are Charles and Gail Weisberg who, as any proud parent would want to do, are here today to listen to their son. Speaking of parenthood, of all the ways that you may be familiar with me, my highlight is being a father to my daughter Marti and my son Ozzy, ages 7 and 5, who are busy having fun and learning in today's children's program.

Before my current role on the Board of Trustees, some of you may recognize me from my prior roles these past six plus years. I was in a Treasurer role and then Vice President of Finance. So of course, numbers are something with which I am comfortable.

Professionally I am a banker, specifically a lender. I understand finances. My kids ask me what I do when I go to work. I took them to "Take Your Children to Work" day this past Spring, so as far as they know I eat lollipops and donuts, count paperclips, color on Post It notes and play on the computer all day.

As you would expect, that's not my typical day at work. I tell my kids that I help people and I help them achieve their dreams. Just as I do with my clients, I look to do so with my efforts here at Temple Emanuel. I want to help all of you achieve your and your family's dreams and ultimately gain fulfillment here at Temple Emanuel. I want you to be connected to each other, to greater Pittsburgh and to our community both inside and outside of this building.

So why these numbers: 14 million, 520 and One?

14 million – this is the estimated world Jewish population as of 2014. The world's total population is greater than 7 billion so we as Jews are less than 1%. Of that 14 million Jews in this world, the United States has approximately 6 million, only 2% of the total US population.

So why should this be important to you? It is because we as Jews truly have made an impact both in our country and in the world in a magnitude that is far greater than our actual

(cont'd. from Page 2)

From David Weisberg

President's Message

numbers. We are notable actors and actresses, business professionals, artists, musicians, scientists, inventors, intellectuals, medical professionals, legal scholars, politicians, fashion designers, comedians, just to name a few. Most importantly, we are connected to each other. You've heard the expression that all people in the world are connected by six degrees of separation. In the Jewish community, my thinking is that it is far less. We've all played "Jewish geography," right? Why? It's because we're all connected.

Of the American Jews who describe themselves as "strongly connected" to Judaism, their active engagement with Judaism ranges from attending daily prayer services on one end of the spectrum to as little as attending Passover Seders or lighting Hanukkah candles on the other. Of those "strongly connected" Jews, just under half belong to a synagogue with the largest percentage being in the Reform movement. We at Temple Emanuel are one of the greater than 800 Reform Jewish congregations in North America. As many congregations are struggling, many have lots of positives. This leads me to my next number.

520. This is the number of member families that we have here at Temple Emanuel. Look around. You are this 520. You are Temple Emanuel. You make Temple Emanuel what it is today as well as tomorrow and the next day. You are the current and the future. Why do you belong to Temple Emanuel? Why is being a member of Temple Emanuel important to you?

We at Temple Emanuel should be proud and have centerpieces from which we can build. We are the largest congregation in the South Hills with 520 member families. We have greater than 150 children in our Torah Center which is the largest Jewish religious school in Greater Pittsburgh outside of Community Day, the Jewish Day School in Squirrel Hill. We have 180 children in our ECDC, the largest of any nursery school in the South Hills of Pittsburgh.

Yes we have things with which we can improve but your generosity and connection are what keep this place going. For that, we thank you. \$1.8 million keeps this place running on an annual basis and that does not include necessary improvements that are needed like the parking lot patchwork and roof repairs, which have been funded out of our capital campaign.

520 is the number of member families, but the actual number of people in our congregation is well over 1,000. As an example, my family of four is one member family. All of us together make Temple Emanuel. All of us should be proud. You are the 520. We all are the 520.

The most important number is the final number I told you we're going to be discussing. The number One. Why? One is

you. One is me. One is each of us. Why is One important? It is important because you are here. You are here today. Maybe you are here in this building for more than just today but you all have a reason for being here. You all have a reason for being a One. You all have a reason for being a part of Temple Emanuel. You all have a connection.

You – the One. You are important. You are valued. Your contribution is key. Your connection is paramount. What else can our Board do to make it more meaningful for you? What can we do to develop greater bonds to each other? We are all in this together. We are One. We are a community, we are Temple Emanuel. We together can continue to build and bring connections to Temple and to each other.

In all deference to Three Dog Night, "One is the loneliest number," I would beg to differ. One makes connections with another. One can link to another. One and One does indeed make two but One plus One is far greater. It connects. It empowers. It compounds. It multiplies. It helps create dreams. Remember, it all starts with One.

Thank you for being the One. I look forward to what lies ahead here at Temple Emanuel. All of us, each of us as individuals, as One's, can connect to make this an even better place than it is today.

Thank you. L'Shana Tovah!

From Rabbi Mark Joel Mahler

Meeting the Mind: Meditation

We are having meditation at Temple every weekend. Weekends without a bar or bat mitzvah, meditation will be from 10:00 to 10:25 before the Shabbat morning service. Weekends with a bar or bat mitzvah, meditation will be Sunday morning from 9:00 to 9:25, before the Sunday morning minyan. Shabbat or Sunday, meditation will be in the Beit HaT'fila. From week to week, the exact schedule will be posted on Temple's various calendars; e.g., the front page worship schedule of the Temple Bulletin and the Temple website.

Each meditation will begin with five minutes devoted to contemplating aspects of meditation throughout Jewish experience. In Jewish tradition, this form of meditation is called, *Hitbonenut*, "Contemplation," more literally "Building," or more exactly "Self-Building." In contemporary parlance, we are building "Mindfulness." In Jewish tradition, we are building *Mochin Gadlut*, a "Greater Mind." Or we might chant a prayer, or a phrase from the Bible, or one of the many mantras from Jewish tradition. There may be no Hebrew word equivalent to "mantra," but Jewish tradition is replete with mantras, from great teachers of meditation like Abraham Abulafia, Isaac Luria, and Nachman of Bratzlav. Five minutes of *Hitbonenut* will then prepare us for twenty minutes of *Hitbodedut*, Meditation.

ELECTION DAY BAKE SALE



Don't forget to Vote on
Tuesday, November 8, 2016
and participate in our fabulous bake sale.

Bake, volunteer to help or just come and purchase the wonderful desserts.

If you are donating baked good, please label your donations (nuts, gluten free, etc). They can be left in Temple's kitchen on Monday, November 7, or bring early on Tuesday, November 8.

We are also looking for volunteers to help staff the booth.

Proceeds will benefit C.U.R.E.D. (Campaigning Urging Research for Eosinophilic Disease) which is Eliana Zahalsky's Mitzvah project and proceed will also benefit the Temple's Murray Gold Library Fund.

For more information on volunteering or to donate, please contact:

Eileen Geffrey at eilgef@yahoo.com or 412-996-9111;
Paula Altschul, altschulp@verizon.net or 412.344.6738; or
Eliana Zahalsky at AmyZahalsky@gmail.com.

Young Family Havdalah* November 12 @ 6:30 pm - 7:30 pm

Join us for our next Young Family Shabbat Experience...
PJ Library Havdalah*

Wear your pajamas!

Join us as we celebrate the end of Shabbat with stories, songs, crafts, and of course – Havdalah*!

Free for everyone, but please RSVP by email to LBlattner@templeemanuelpgh.org or calling the office at 412.279.7600.

We welcome all parents/grandparents with infants through 2nd graders (older siblings welcome!) to join us for Young Family Shabbat Experiences.

*A brief service that marks the end of Shabbat

WARNING:

If you can't read this,
you need classes!



Five FREE hour-and-a-half lessons that are perfect for beginners and intermediates.

Sundays, Nov. 6, 13 & 20 and Dec. 4 & 11

10:30 a.m. to 12:00 noon

Teacher – Melinda Freed

RSVP to lblattner@templeemanuelpgh.org

Classes offered in partnership with NJOP
Read Hebrew America/Canada Initiative

Join us for
First Friday Shabbat
Friday, November 4th
Pre-Oneg – 5:45 pm
First Friday Shabbat Service - 6:30 pm

“Jews in the News” with Rabbi Mahler

Friday, November 18th
at Concordia
11:00 am

South Hills

NOVEMBER

TORAH
WEEKEND

18-19, 2016

Rabbi
Gershom

Sizomu, the spiritual leader of the Abayudaya Jews of Uganda (tribal name means "people of Judah"), is the first black

rabbi from sub-Saharan Africa to be ordained at an American rabbinic school. In 2003, Rabbi Sizomu was awarded a Be'chol Lashon Fellowship to attend the 5-year Ziegler School of Rabbinic Studies program at the University of Judaism in Los Angeles. In 2008, he was ordained and returned home to Uganda to lead his Jewish community and establish a yeshiva in Uganda to train Jews from ancient and emerging communities throughout Africa.

Today, Rabbi Sizomu, a charismatic leader and accomplished musician, continues to help his community remain healthy and strong, both physically and spiritually. The Abayudaya are a growing community of over 2,000 Jews among their Christian and Muslim neighbors in scattered villages of Eastern Uganda. With the support of Be'chol Lashon,* the Abayudaya are engaged in a comprehensive Health and Development Project that includes building the Tobin Health Center, preventing disease, and developing economy. Improved healthcare and community development provided by the Abayudaya Jews to their Christian and Muslim neighbors fosters good will and cooperation among the communities.

Rabbi Gershom Sizomu is Senior Rabbinic Associate at Be'chol Lashon and member of Ugandan Parliament. He is married to Tziporah and has four children: Igaal, Dafna, Naavah, and Zivah.

**Be'chol Lashon (In Every Tongue) grows and strengthens the Jewish people through ethnic, cultural, and racial inclusiveness.*

Weekend Schedule

Friday, November 18

Temple Emanuel of South Hills

1250 Bower Hill Road 15243

5:45 p.m. — Pre Oneg Reception

6:30 p.m. — *History of the Abayudaya Jewish Community & Be'chol Lashon*

Saturday, November 19

Beth El Congregation

1900 Cochran Road 15220

9:15 a.m. — *Life Under Idi Amin & Life in Public Office*

Kiddush luncheon with Q & A to follow

South Hills JCC

345 Kane Boulevard 15243

7:00 p.m. — Dessert Reception & Musical Havdalah

Rabbi Sizomu will speak on
Health and Economic Development of the Abayudaya Jewish Community

For more information visit
www.southhillsewewishpittsburgh.org

Funded by The Rabbi William Sajowitz Endowment Fund of Temple Emanuel of South Hills, the Men's Club of Beth El Congregation, South Hills JCC and through a grant from South Hills Jewish Pittsburgh. It is also supported by Beth Israel Center and Congregation Ahavath Achim (the Carnegie Shul)

Todah Rabah! We couldn't do it without you!

Many Temple Emanuel Congregants came together this new year, 5777 to make the High Holy Days observance, led by Rabbi Mark Mahler and Rabbi Jessica Locketz, a beautiful and inspirational experience. We acknowledge their mitzvah and extend our sincere and heartfelt appreciation.

- First, to our congregation, who filled our Temple with prayer, song, and community.
- Selichot Reception chair Paula Altschul and the Selichot reception contributors: Paula Altschul, Marcy Bernson, Lori Blattner, Roberta Carr, Stephanie Claypool, Marianne Faber, Melinda Freed, Eileen Geffrey, Peggy Gold, Judy Haseleu, Kate Louik, Irene Luchinsky, Michelle Markowitz, Robin Minutello, Amy Pardo, Beth Schwartz, Lisa Steinfeld, Stacy Tafeen and Rita Zolot
- Selichot participants: Mitchell Bober, Rebecca Schwartz and David Weisberg along with Beth El members: Alva Daffner, Alan Frank and Cliff Spungen.
- Aron Zelkowitz for his outstanding Kol Nidre solo.
- Harvey Rubin and Ron Schneider for the stirring sounds they produced on the Shofar at our services.
- Dr. Charles Cohen and Jim Burns for their Inspirational music.
- To the following volunteers making Rosh HaShana and Yom Kippur High Holy Days more special for our pre-school through 6th grade children: Lynn Bahm, Jennifer Bahm, Bryan Bahm, Jonathan Bahm, Evan Bahm, Sandee Connors-Rowe, Diane Dreifuss, Michelle Dreyfuss, Lisa Dvorin, Zoe Dvorin, Maggie Friedman, Kathy Ginsburg, Ike Goldman, Maggie Goldman, Cami Herman, Lydia Herman, Jill Hicks, Shoshanah Karow, Hannah Labovitz, Rebecca Labovitz, Ben Lebovitz, Emily Linder, Kate Louik, Stephanie McFerron, Naomi Pittle, Jason Richards, Anna Schwartz, Rebecca Schwartz, Alexa Silverman, Mindy Spitzer, Eden Weiner and Zach Wik,
- Steve Zoffer for providing music and Anna Schwartz for blowing the Shofar.
- Torah lay readers: Melinda Freed, Ben Handen, Robin Hausman, Jacob Naveh and Milt Wolf.
- Haftorah lay readers: David Cohen, Joan Rothaus, Daniel Rothschild, Israel Rudoy and Mel Vatz.
- Candlelighters: Iris Harlan and Alice Mahler.
- Bima Sitters:
Keith Abrams, Artie Baran, Marci Barnes, Mitchell Bober, Adam Brufsky, Mary Cothran, Nate Eisinger, Sara Frey, Lee Golomb, Jason Green, Helaine Labovitz, Max Louik, Michelle Markowitz, Ron Richards, Dave Rullo, Jo Schuman, Beth Schwartz, Lisa Steinfeld, Renee Tatro, Barb Udren, Jeff Weiner, David Weisberg, Jeff Young.

- Aliyah Participants: David Abrams, Marty Altschul, Paula Altschul, Tracy Barnett, Marcy Bernson, Meredith Cohen, Janet Cooper, Jerry Cooper, Melinda Freed, Chris Harlan, Betty Jo Hirschfield Louik, Jerry Pearl, Harvey Rubin, Leah Rubinstein, Larry Schwartz, Matt Schwartz, Rebecca Schwartz, Eric Udren, Andrew Zahalsky, Amy Zahalsky.
- Participants in Yom Kippur afternoon service: David Dvorin Family, Jason A. Green Family, Howard Ginsburg Family, Stephanie Reiss & Son and the Matthew Schwartz Family.
- Marty Altschul for carrying the Holocaust Torah.
- Our efficient and gracious ushering staff under the experienced leadership of Milt Wolf: Peter Alt, Marty Altschul, Paula Altschul, Carl Bahm, Bill Berkowitz, Jeff Bernson, Steve Blattner, Michael Bleier, Gary Brant, Mary Cothran, Lee Feldman, Moses Finder, Peter Freed, Roz Goorin, Ben Handen, Arnie Klein, Bob Konig, Art Kramer, Bill Labovitz, Roger Liss, Lynn Mandel, Robin Minutello, Paul Richardson, Gerald Rubenstein, Harvey Rubin, Paul Rudoy, Len Sogoloff, Mel Vatz, Jeff Weiner, Rich Wellins, and Barbara Wolf.
- Beth Schwartz and the Worship Team for working on all areas of worship assignments.
- The Social Action Team chaired by Marty Altschul for preparing bags for our food drive and the congregants for returning full bags of food for SHIM (South Hills Interfaith Movement).
- Jeff Weiner for providing the greens and gourds for the Sukkah.
- Volunteers for their creativity and hard work in building and decorating the Sanctuary and outside Sukkahs
- The entire Temple staff for ensuring that our High Holy Days observance went smoothly.

Bereavement Support Group

Meeting on
Sunday, November 20th
@ 10:00 a.m.

Led by **Alice Mahler, LCSW** and
Julie Bowden, Ph.D.

Both Alice and Julie have extensive
experience in grief counseling.

No need to preregister.

Find the support you need to deal with loss. Don't grieve alone. Meet others who have lost their parents, siblings, partners or children and find hope. All are welcome.

Questions? Contact Alice Mahler at 412.606.3288.

COLLEGE SCHOLARSHIPS 2017-2018

Financial aid for 2017-2018 is available from the Central Scholarship and Loan Referral Service (CSLRS) of the Jewish Federation of Greater Pittsburgh.

Scholarships are distributed on the basis of demonstrated financial need. Other factors such as academic achievement, personal characteristics, and individual circumstances may also be considered. The applicant must be Jewish, reside in Allegheny, Westmoreland, Beaver, Butler or Washington County for at least two years, and need financial assistance to attend an accredited institution of higher education as either an undergraduate or graduate student. **For school year 2017-2018, Central Scholarship will use an online application process available in late November at <http://www.centralscholarship.org>.**

For more information call JF&CS at (412) 422-5627 or write to: Central Scholarship & Loan Referral Service, 5743 Bartlett Street, Pittsburgh, PA 15217.

First-time applicants must be interviewed. All applications should be submitted as early as possible to ensure processing.

The deadline for 2017-2018 application is February 9, 2017.

From the Social Action Food Bank Team

FOOD DONATIONS ALWAYS NEEDED

We had a wonderful food collection over the holidays. SHIM was very grateful for all the food that was donated and we would like to thank all our Temple congregates that contributed.

Time moves on and as always SHIM still needs non-perishable food items for their food bank, we are hoping to collect **Thanksgiving items such as gravy, roll mixes, canned fruit and vegetables, brownie mix, stuffing, Instant mashed potatoes and more.**

We only make this suggestion to try to balance our donations to the food pantry. We are also collecting gluten-free soups and pasta.

Please bring your items to Temple Emanuel and place them in the marked container for SHIM. SHIM is very grateful to those at Temple Emanuel who are helping fill their pantry.

MOVIE AND MUNCHIES

Bring your friends & neighbors

Monday, November 28

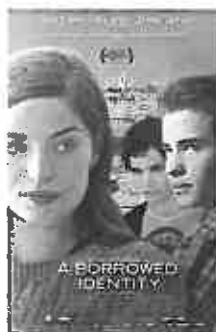
1:00 pm

Temple's Community Room

Presenting

"A Borrowed Identity"

1hr 44min · Drama



A gifted Palestinian Israeli boy, Eyad, is given the chance to go to a prestigious Jewish boarding school in Jerusalem. It becomes difficult for him to fit in with his Jewish schoolmates and within Israeli society. He falls in love with a Jewish girl, Naomi, and he leaves school when their relationship is uncovered. He discovers that he will have to sacrifice his identity in order to

be accepted. Faced with a choice, Eyad will have to make a decision that will change his life forever.

Ready for pick up:

The 2016-2017

ENJOY COUPON BOOKS

@ \$30 each

**JAM-PACKED WITH OVER A THOUSAND OFFERS
TO USE ALL OVER TOWN, ALL YEAR!**

This book contains hundreds of two-for-one and 50% off discounts on dining, sporting events, golf, theatres, cleaners and much more.

START USING THEM IMMEDIATELY.

Make checks payable to:

—TEMPLE EMANUEL BROTHERHOOD—

Call Ruby to reserve your book(s) @ 412.276.0105 or contact Temple's office, 412.279.7600.



SOUTH HILLS JEWISH PITTSBURGH

Community Engagement Survey



Take the Survey Now

\$36 Giant Eagle Gift Cards
to 10 Survey Respondents!

To take the survey, go to
<https://www.surveymonkey.com/r/H7F8XZ8>

South Hills Town Hall Meeting with Jeff Finkelstein & Cindy Shapira November 30th 7:00 pm–9:00 pm South Hills JCC

Join the conversation about the Jewish Federation of Greater Pittsburgh's continued support of South Hills Jewish Pittsburgh with CEO/President Jeff Finkelstein and Chairperson Cindy Shapira.

Snacks and light refreshments provided. Dietary Laws observed.

FREE and open to the entire South Hills Jewish Community.

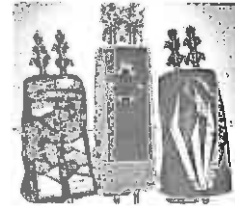
Come and Get It.... Please

The new Temple Directory is in and was distributed at the Labor Day Picnic and to the Torah Center families. If you have not yet received your new Directory, please come to the Temple office to get one. The office hours are Mondays thru Thursdays from 8:00 a.m. to 5:00 p.m. and Fridays from 8:00 a.m. to 3:00 p.m.

TORAH STUDY

With Rabbi Mark Mahler

**Saturdays
9 – 10:30 am**



Our Shabbat morning Torah Study focuses on the weekly Torah portion. The session is built on the reading and translation of various passages from the Torah portion, traditional commentary and group discussion. No background in Hebrew or the Bible is necessary, only an interest in exploring the text.

Save your Wednesday mornings for

T'hilim (Psalms) & Tangents

With Rabbi Mark Mahler

Wednesdays, 10-11 am

All are invited to attend this weekly discussion group at Temple Emanuel. We will be reading the book of Psalms, Psalm by Psalm, and discussing timely topics in the Jewish world.

Attention Members

If you no longer are using a landline, please contact the Temple office by email templemanuel@templemanuelpgh.org or call 412.279.7600 with your contact cell phone number so we can update our records. Thank you.



The Larry Miller Caring Community is looking for Temple members to help with making cards, Shabbat bags, making phone calls, attending a shiva minyan. If you can donate your time even once this year please call Sara Frey 412-835-1783 or sifrey@comcast.net. We welcome new people. We are a community of Jewish Temple members dedicated to helping other members with their life cycle events.

From The Larry Miller Memorial Caring Community

NEED A RIDE

Frank Barnes, our Temple member, has started a driving business and he has offered to transport Temple members who are unable to drive to/from Shabbat services at no charge.

If you need a ride for services, he can be reached by email at frank_barnes_40@yahoo.com or at 412.722.3654.

For more information about his business, go to www.drivepittsburgh16.wix.com/drivepgh.



Wedding anniversaries are a time to celebrate the joys of today, the memories of yesterday and the hopes of tomorrow. Best wishes to our Temple members who are celebrating their **anniversary in November**.

- | | |
|---------------------------|----------------------------|
| Michael & Aimee Braun | Dante Plutko & |
| Steve & Jennifer Cohen | Barbara Belle-Plutko |
| Marc & Alyssa Foremsky | Ron & Britt Roteman |
| David & Barbara Greenberg | Gerald & Marcia Rubenstein |
| Philip & Debra Levy | Jeffrey & Kathryn Simons |
| Roger & Janet Liss | Leonard & Naomi Sogoloff |
| Eric & Marsha Morgenstern | Jesse & Julie Sweet |

Janet & Jack Mostow

Stuart & Rita Zolot



Join Together For
Our 50th Year Celebration
 of our
**Annual SOUTH HILLS INTERFAITH
 THANKSGIVING SERVICE**

Tuesday
November 22, 2016
7:30 PM

Hosted this year by
Good Shepherd Lutheran Church
 1700 Bower Hill Road, Pittsburgh, PA 15243

Temple Emanuel members are invited and encouraged to join with congregants from Bower Hill Community Church, Good Shepherd Lutheran Church, Our Lady of Grace and Greater Hope Restoration Ministry that will participate for the first time.

This is always a heartwarming service as we all join together.

SHIM COAT DRIVE

Temple Emanuel will be collecting tots', kids' and adults' gently used and clean outerwear and accessories for South Hills Interfaith Movement (the new name of SHIM) from now until early December. There will be a bin in the courtyard hallway at Temple to drop off these items.

TEMPLE FAMILY Menschenings

Shalom

A warm welcome goes to new members of our Temple family:

- **Sean Collins** and his son, **Jacob**
- **Sophia & Alexander Glukhovsky**
- **Jennifer & Brian Reverri** and their children, **Ariella & Sienna**

Our condolences on the following bereavements:

יהי זכרם ברוך

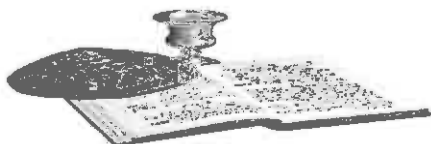
- **Sandra Pittle**, mother of Howard Pittle (September 28)
- **John William Colavincenzo**, father of Peggy Gold (October 1)
- **Lester Rosenblum**, father of Arlene Roos (October 3)
- **Carol Maidman**, Temple member and mother of Scott Maidman, grandmother of Owen & Cecelia Maidman (October 5)
- **Lynette Barr**, Temple member and wife of Bernard J. Barr, mother of Eric Barr and grandmother of Jared Barr.

מזל טוב Mazal Tov

Honors:

- **Paul Abrams** is one of 12 USC seniors named Semifinalists in the 2017 National Merit Scholarship Program. He scored in the top one percent of all juniors completing the PSAT in October 2015. Paul is the son of **Meg and Keith Abrams**.
- **Phillip Hoffman and Allie Ryave** are two of 13 USC HS seniors who recently was recognized as Commended Student in the 2017 National Merit Scholarship Program. Phillip is the son of **Leslie & David Hoffman** and Allie is the daughter of **Judy Ryave**.

BAR MITZVAH



CYRUS JONATHAN KHANI

On Friday, November 4, the Shabbat candles will be kindled by Pamela Khani. The pulpit flowers will be provided by Pamela and David Khani who will share with Temple Emanuel in hosting the Oneg Shabbat in honor of their son, Cyrus, becoming a Bar Mitzvah. On Saturday, November 5, please join with the Khani family as they host the Kiddush following Shabbat morning services.

Cyrus' mitzvah project is to work on a fundraiser for the American Cancer Society.

TEMPLE'S JUDAICA



Unique Gift Items for: B'nei Mitzvot, Confirmation, Art Work, Engagements, Weddings, Birthdays, Simchas, Hostess Gifts, Holiday Accessories, Books & Cards.

FREE CUSTOM GIFT WRAP

HOURS DURING TORAH CENTER:

- Sundays** - 9:30 am to 12 noon
- Mondays** - 6:30 to 8:30 p.m.
- Wednesdays** - 4:30 to 6:30 p.m.

OR ANYTIME BY APPOINTMENT

- April Zaslau—412.279.3750
- Rita Zolot—412.279.1020
- Eileen Geffrey—412.854.9111

It's time to order your 2017 National Mah Jongg League cards thru Temple Emanuel's Gift Shop

- Cost per card is: \$8 (small) or \$9 (large)
- Make your check payable to *Temple Emanuel (please note mahj card on memo line)*
- Mail (or drop off) your check to: 1250 Bower Hill Rd., 15243.

For groups:

If ONE check, note name, address and size for each card so League can mail cards directly to each player.

Individual checks are fine.

- Deadline is January 22, 2017 (cards cannot be ordered without payment).
- Cards usually arrive on April 1st.

Questions? Call Rita at 412.279.1020 or SDZolot@aol.com

Also, Pushers are now available, clear, \$17 - set of 4.



**Todah Rabah to our
Office Volunteers.
Our volunteers are unpaid not
because they are worthless,
but because they are
priceless.**

Martha Berman, Lisa Katz, Flora Calgaro, Peggy Gold, Nancy Berkowitz, Ellie Bahm, Roberta Carr, Penny Abrams, Nan Simon, Stacy Tafeen, Corinne Mazerov, Roz & Farrel Levine, Susan Hommel, Irene Luchinsky, Allen Beitman and Susan Konig.

**GIANT EAGLE GIFT
CARDS ARE
AVAILABLE IN
TEMPLE'S OFFICE.**

From Paula Altschul, Librarian

Pollon Family Library News

Librarian's Hours:

Sunday 9:30 am – noon; Monday 11:00 am - 3:00 pm
Wednesday 2:00 - 6:30 pm; Thursday 11:00 am - 5:00 pm

Incorporating Judaism into your everyday life shouldn't be that hard. So many of the books we have in the Pollon Family Library of Temple Emanuel can be read and used in our secular lives. As our Temple President, David Weisberg, said in his annual address on Yom Kippur, connections are important, and lifelong friendships are made at Temple Emanuel with people and reading.

That's right - friendship with books! I know that everyone is busy and children are sometimes required to read their school curriculum books, but we have a great resource right here, and a very friendly lending policy.

Parents who come to the Library on Sunday morning and/or Wednesday afternoon usually engage in conversation and get to know one another. Sometimes, it's quiet and they actually get to read or work on their laptops! However, I always try to introduce people and encourage them to become more active in Temple. There are just so many ways to connect.

I hope you will all have a healthy 5777 and read a good book—graphic novel, historical fiction, non-fiction, academic; whatever your interest.

BTW, even if you still don't want to read a book, I can give you a good movie recommendation. Or you can give me one. Some of my best ideas aren't actually mine. They have come from congregants suggestions. I recently learned about a website that might be interesting. It is ritualwell.org. Check it out.

Check out our movie on November 28th, advertised on page 7. Even if you can't attend, a lot of the movies I show are also available through our public library system.

LUNCH AND LEARN SERIES

Monday,
NOVEMBER 14, 2016
Noon

Speaker:

Bob MacGregor from CARIE
Center for Advocacy for the
Rights and Interests for the Elderly

Topic:

"Medicare Fraud Prevention"

RSVP by November 9th to Sue Kantrowitz at
412-276-0520 or asusie2@yahoo.com
[put Lunch & Learn on the subject line].
Donation \$6.00 per person.

LUNCH DOWNTOWN WITH RABBI MAHLER



If you work downtown, or can meet downtown at noon, bring your lunch and join this discussion group with Rabbi Mark Mahler that focuses on Jewish current events and traditional Jewish text study.

MONDAY, NOVEMBER 21
@ NOON

HOST: David Cohen

LOCATION: Reed Smith
225 Fifth Ave.
Suite 1200
Pittsburgh 15222

RSVP: SKaiser@reedsmith.com
[suzy]

412.288.4271

From Iris Harlan, ECDC Director



How Pleasant It is for Friends to Sing Together

Friday Assembly is a treasured tradition at Temple Emanuel ECDC. For decades our children and teachers have gathered on Fridays to sing songs. Through the years we have developed a repertoire of favorites including seasonal, Shabbat and just plain silly songs. When I meet older children and even young adults who attended ECDC (Temple Emanuel Nursery School or TENS), I ask them about their favorite memory and they often reply – Assembly!

This summer while traveling in Israel on a “Classrooms without Borders” trip with 24 Early Childhood Educators, we had constant discussion about “bringing Israel” to our programs in Pittsburgh. Two ECDC teachers, Julie Silverman and Michelle Dreyfuss, were among this group of amazing women, so we had ongoing opportunity to talk specifically about our dreams for our center. Among hours of conversation, I remember a moment on a bus tour, when Julie said, “We should do Kabbalat Shabbat at Temple!” I was also inspired when I heard a group of five year olds in an Israeli Gan (preschool) singing “Hinei Ma Tov” with gusto. Surely we could recreate that feeling at ECDC.

We wanted to build on the tradition of Assembly with improvements and without harming what we already value. How would that be possible? Like any improvement plan, it would be important to write down our goals and to gather input from our community.

Goals:

- Build a repertoire of favorite songs for community singing.
- Build a connection and reverence for Shabbat with Shabbat songs and rituals.
- Offer and enjoy a wide range of beautiful and high-quality music experiences – vocal and instrumental.
- Offer opportunity to enjoy music with movement and/or rhythm instruments

We are fortunate that both Rabbi Locketz and Cantor Rena Shapiro are helping us to reach these goals by sometimes leading Assembly and sharing their talents. If you are a good song leader or play an instrument, we invite you to participate in Kabbalat Shabbat at ECDC. Please call me at 412-279-7687 or send an email at iharlan@templemanuelphg.org. To make a small revision on beloved traditional text, “How pleasant it is for friends to sing together!”

Hinei Ma Tov
 Uma na'im
 Shevat achim gam yachad

Hinei ma tov
 Hinei ma tov
 Lai lai lai lai lai

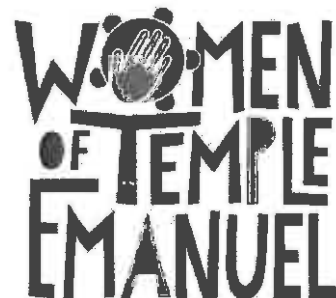
Behold how good
 And how pleasant it is
 For friends to dwell together

Just Mention Our #1250695 To The United Way

Temple Emanuel ECDC is a United Way Choice Contributor agency!

Please think of us when contributing to the United Way. The funds will help us to make scholarships available to families facing financial hardships as well as providing special programming for the children. We appreciate your donations and thank you in advance.

Our United Way Number is **1250695** and must be used when you make your contribution.



BOOK CLUB
THURSDAY,
NOVEMBER 17
Location and Time TBA

Reviewing the book
Aftertaste by *Meredith Milet*
 (aka our Temple member Meredith Cohen)

We are happy to have Meredith with us for our discussion

Please RSVP to Laura Young at laurahopkins@hotmail.com or 917-488-8995; Beth Schwartz at mschwartzb@gmail.com or 412-388-0669

Knitting & Crocheting Circle of Friends

Meeting on
Sunday, November 13th
10:00 am – noon

Meeting outside of
Anthropologie at the Galleria.

Fall Scarf Challenge

Have a favorite fall color?
Rooting for a favorite fall sports team and
want to display their team colors?

In conjunction with Temple Emanuel fall coat drive,
please consider knitting or crocheting a scarf to be
donated to SHIM.

All new knitted or crocheted scarves will be accepted
from October 1st through December 1st. Please place
your completed scarf in a clear plastic Ziplock bag with a
drop off point either at the coat collection box or at the
Temple office.

Donations of new clean yarn for projects is always
welcome and appreciated. Drop off point is the knitting
box in the community room.

Thank you as always for your generosity, time and talent.

MIRYAM'S PLACE

Miryam's Place offers a safe sanctuary, nutritious meals
and other services to homeless women and those at-risk
of homelessness. Lunch and dinner are offered to
approximately 45 women, seven days a week. For
several years a number of Temple families or groups of
members have been providing occasional meals to
Miryam's. Our goal is to fulfill at least one meal a month
that comes from a family or a group from Temple. You
have the option of preparing the meal at your house or
you may use the lovely kitchen at Miryam's. Meal service
is cafeteria style; you and your family may wish to help
serve also, but that is optional.

We are still looking for families or groups that can provide
a meal in November. Please contact Carol Rose at
rosece428@comcast.net or by phone at 412-279-2771.
We can also talk about dates in 2017. Thanks.

Please Be In Touch With Us

We are eager to be in touch with all members of the
Temple family whenever there are occasions of joy or
sadness in your lives. Please call us as soon as possible,
for yourself, a loved one, or for another Temple member,
especially when there is a death in the family. We very
much want to be there with you at a time of grief, and
celebrate with you in times of joy. In an emergency,
always feel free to call us at home if the Temple office is
closed.

Temple Emanuel is also here as a safe haven in times of
crisis and confusion. We will always offer you a listening
ear, a caring heart, confidentiality and guidance to the
best of our abilities.

Rabbi Mahler and Rabbi Locketz



In the event of inclement weather, we will announce our
Torah Center's closing: on KDKA Channel 2, WTAE
Channel 4 and WPXI Channel 11. You can check the
information at www.KDKA.com, www.WPXI.com, or
www.WTAE.com. Torah Center will also send an e-blast to
those families enrolled. There will be no Beit Ha Midrash
(Adult Education) classes when Torah Center is
cancelled.



Leave Your Address With Us

If you are leaving Pittsburgh for the winter, please notify
the Temple office with your alternate address, your e-mail
address, and phone number.

CIRCLES OF GIVING

Circles of Giving are Temple Emanuel's way of meeting our financial challenges while enabling families on dues "adjustments" or behind in their commitment to be a part of our Temple community. By contributing over & above basic dues – as you are able – you ensure that Temple continues to serve as the center of your Jewish community. Thank you to those who have already given. For more information, contact Leslie Hoffman, 412.279.7600.

DONOR CIRCLE 1 - \$2,700 TO \$3,199

Margaret & Keith Abrams	Robin & Richard Minutello
Amy & David Bahm	Caroline & Erik Naft
Lynn & Carl Bahm	Linda & Stuart Nyman
Martha Berman	Naomi & Howard Pittle
Natalie & Eric Bernstein	Lauren & Ken Rice
Carol & Michael Bleier	Carol & Byron Rose
Carol & Jeff Chase	Lori & Daniel Rothschild
Judith & Ira Cohen	Lynn & Harvey Rubin
Mary Cothran	Deborah & Paul Rudoy
Laura & Brian Davidson	Joan Scheinholtz
Katie & Peter Davis	Veronica & Jonathan Schmerling
Betty Diskin	Debra & Ronald Schneider
Diane & Frank Dreifuss	Beth & Matt Schwartz
Lisa & David Dvorin	Linda & Martin Sloan
Sylvia Feinberg	Sharon & Jack Soodik
Delaree & Bruce Fine	Mitchell Taback
Wendy & Peter Freed	Jon Tucker
June Swanson & Richard Gordon	Barbara & Eric Udren
Charles Greenberg	Rikki Hommel & David Weisberg
Dianna Ploof & Ben Handen	Nancy & Michael Weissman
Susan & Richard Hommel	Tobi & Jonathan Williams
Carol & Irv Horowitz	Lisa & Morton Wintner
Diane & John Inserra	Barbara & Milton Wolf
Saundra Lumish	April & Stanley Zaslau
Jill & David Mandelblatt	Marion Zeichner
Leslie & Ronald Marcus	Rachel & Steven Zoffer
Michelle & Pace Markowitz	Rita & Stuart Zolot
Sue & Ray Melcher	

DONOR CIRCLE 2 - \$3,200 TO \$3,699

Ellie Bahm	Barbara & David Greenberg
Marcy & Jeffrey Bernson	Sandra Kaplan
Kim & Robert Breit	Pamela & David Khani
Meredith & David Cohen	Susan & Bob Konig
Diane & Arnold Eger	Marlene Naft
Susan & Mark Eger	Heidi & Richard Russman
Nancy & Dan Garfinkel	Celeste & Rafael Schmulevich
Carol & Theodore Goldberg	Barbara Trachtenberg

DONOR CIRCLE 3 - \$3,700 TO \$4,199

Sandra & Seymour Baskin	Lynn & Larry Lebowitz
Karen & Anthony Captline	Betty Jo Hirschfield Louik & Howard Louik
Beth & Dan Erlanger	Joan & Ronald Rothaus
Laryn & Moses Finder	Marcia & Jerry Rubenstein
Margaret & Louis Gold	Ingrid & Eric Smiga
Robin & Steven Hausman	
Carol & Peter Kaplan	

DONOR CIRCLE 4 - \$4,200 TO \$5,399

Nancy & Bill Berkowitz	Lori & Robert Shure
Andrea & Jeffrey Fitting	

DONOR CIRCLE 5 - \$5,400 TO \$7,599

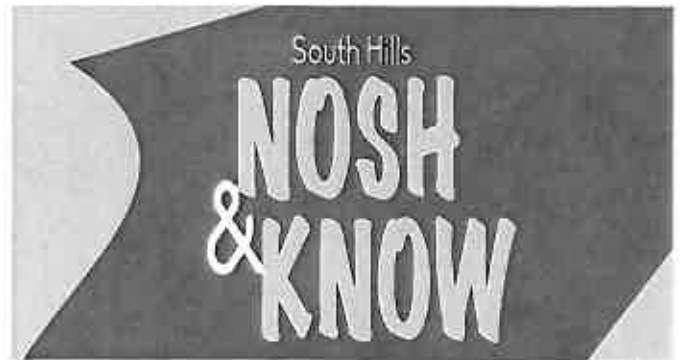
Laura Brookfield & Greg Christiansen	Erica & Bill Goodman
Sally & Leonard Gehl	Charles Snyder

DONOR CIRCLE 6 - \$7,600 TO \$10,399

Jill & Adam Brusky	Amy & Andrew Zahalsky
--------------------	-----------------------

DONOR CIRCLE 7 - \$10,400 +

Dorothy & Neal Pollon



With Rabbi Danny Schiff,
Foundation Scholar

Nosh & Know

Wednesdays

November 9–December 14

11:45 a.m.–1:00 p.m.

The Artsmiths of Pittsburgh

1635 McFarland Road, 15216

Some Jewish Thoughts On...

- 11/9 - Truth and Lies - Is there any "Grey"?
- 11/16 - Tzedakah (Charity) - What's Expected?
- 11/30 - Gossip and Slander - Should We Care?
- 12/7 - Prayer - What's the Point?
- 12/14 - Miracles - Fact or Fiction?

\$10 per session/\$25 for all 5 sessions

Light lunch provided

Dietary laws observed

RSVP by calling 412.697.6647 or email

ahertzman@jfedpgh.org

Accommodations available to include differing abilities.

Please email ahertzman@jfedpgh.org or call 412-697-6652 with needs.

DONATIONS TO TEMPLE FUNDS

Pay tribute to someone special and provide much appreciated financial support for Temple by donating to a Temple Fund.

(Minimum donation of \$10 will be accepted for all funds unless otherwise indicated below.)

#21 CAPITAL CAMPAIGN FUND

To fund & bring to completion the renovation & expansion project.

#23 CEMETERY BEAUTIFICATION FUND

Enhances Temple Emanuel's Cemetery beyond perpetual care.

DONOR

Ellen Felder
Elaine Goldblum
Sally & Milton Lebowitz
Lynn & Harvey Rubin
Sid Metzger
Barbara & Gerald Chotiner
Rochelle Rudoy
Sylvia Feinberg
Jason Paransky
Stuart Glasspool
Judi & Iz Rudoy
Helen Surtoff

Betsy Espel
Mitchell Taback
Marlene Naft
Georgia L. Kent
Joan Scheinholtz

Margaret Kimball

Susan & Stuart Schlansky
Ann Bregman Rascoe
Rona Pookman &
Ken Pookman
Margot Zabban
Natalie Mandelblatt
Ellie Bahm
Eric Raphael
Robert Kalinsky

#6 SHELLY COHEN CLASSROOM FUND

For classroom refurbishment

#7 RICHARD A. COHN & CHARLOTTE COHN MEMORIAL SCHOLARSHIP

Provides an annual college freshman grant to a deserving student(s) who is a Temple member & whose accomplishments & character merit this award.

#20 CHARLOTTE & PETER COOPER GARDEN FUND

Supports the planting & upkeep of the garden behind Temple.

#19 DISKIN MUSIC FUND

Presents innovative and special music and music education programs through religious school and Temple events, as well as events open to the community.

#14 GENERAL FUND

Supports the most basic and fundamental purposes of our synagogue.

DONOR

Temple Emanuel Board

IN MEMORY

John W. Colavincenzo
Sandra Pittle
Carol Maidman
Lester Rosenblum
Lynette Barr

Marilyn Shure
Sandi Ruben
Rose Field

Penny & David Abrams

Joan & Ron Rothaus
The Dvorin Family

Elie Baker Feldman
Heidi Russman
Joan & Ron Rothaus
Cheryl & Howie Baskin
Joan Scheinholtz
Robin & Rick Minutello

Richard Ballon
Rikki Hommel &
David Weisberg
Cheri & Joel Schwartz
Beverly & Bernard Wolfson
Linda & Martin Sloan
Natalie & Eric Bernstein
Jeff Bernson
Carol Kaplan

Pauli & Jason Green
Beth & Matt Schwartz

Marlene W. Naft

Noel & Sam Bliman
Rita & Allen Cobbett

DONOR
Rikki Hommel &
David Weisberg

Joan & Ron Rothaus

Robin & Rick Minutello

Dr. & Mrs. Stephen Dvorin

#8 JEANNE GLASSPOOL NURSERY SCHOOL FUND

Provides special equipment, repairs & maintenance of the indoor gym.

#9 MURRAY GOLD LIBRARY FUND

Purchases books, supplies and equipment for the Library. To purchase a book, the minimum donation is \$36.

DONOR

Anonymous
Anonymous
DONOR
Anonymous

IN MEMORY

Donation
Donation
IN HONOR
Donation

#17 HOLOCAUST MEMORIAL GARDEN

Supports the planting & upkeep of the garden in the courtyard area remembering the six million Jews lost during World War II and those who survived.

DONOR

Lynn & Harvey Rubin
Toba & Howard Myers

IN MEMORY

Frieda Rubin
Lucille Gerson

Herbert Shure
Miriam Schatz
Mary Presser, beloved mother

Beatrice "Beechie" Claypool

Herbert Brody
Beatrice "Beechie" Claypool

Sandra Pittle
Morton Baker
Judith Rodney
Victoria Levitt
Herbert Brody
Herbert Brody
Beatrice "Beechie" Claypool
Abe Ballon

Sandra Pittle
Carol Maidman
Shirley Bleiberg
Maryce Sloan
Sandra Pittle
Esther Bernson
Gertrude Tarbis, beloved mother
Sandra Pittle
Sandra Pittle
Carol Maidman
Ethel Weiss
Sally Naft
Loretta Haven
Esther Shore

IN HONOR

Birth of Alana Claire Kirklín, granddaughter of Meredith & David Cohen

Birth of Alana Claire Kirklín, granddaughter of Meredith & David Cohen

Birth of Alana Claire Kirklín, granddaughter of Meredith & David Cohen

Lisa, David, Sam, Zoe & Ian Dvorin

#26 JACOB'S LADDER FUND

Provides programming, including open forums for our community, concerning youth issues.

#28 MARTHA KLEIN LOTTMAN FAMILY FUND

Provides matching monies for Jewish Early Childhood Education Initiative & related projects.

#22 MARK LEVIN SCHOLARSHIP FUND

Provides scholarships to students for Torah Center on the basis of demonstrated financial need.

#5 RABBI LOCKETZ'S DISCRETIONARY FUND

Assists the Rabbi in programs helpful to the pursuit of her work & in the enrichment of congregation & Jewish life, both programmatically & philanthropically.

#4 RABBI MAHLER'S DISCRETIONARY FUND

Assists the Rabbi in programs helpful to the pursuit of his work & in the enrichment of congregation & Jewish life, both programmatically & philanthropically.

DONOR

Janice Keilly
Laura & Brian Davidson

Linda Scott

DONOR

Carol & Peter Kaplan

Iris, Larry, Elizabeth & David Friedman

IN MEMORY

Andrew Claypool's mother
Robert Rothschild
Herbert Brody

Rose & Nathan Simon

IN HONOR

Birth of Euan, Rabbi & Alice Mahler's grandson

Birth of Euan Benjamin Mahler

#10 LARRY MILLER MEMORIAL CARING COMMUNITY

Facilitates care to members of our congregation in times of crisis.

#15 PRAYERBOOK FUND

Purchases & maintains books for worship (Prayerbooks—\$36; Bibles—\$55).

DONOR

Roz & Farrel Levine

Sandy & Steve Roth

IN MEMORY

Lester Rosenblum, father of Arlene Roos
Lester Rosenblum, father of Arlene Roos

#11 REBECCA REVSIN MEMORIAL FUND

Supports Temple's Torah Center through the purchase of special materials & equipment.

#1 RABBI WILLIAM SAJOWITZ ENDOWMENT FUND

Support, enhances & ensures special programs for our youth & the entire congregation.

#16 NAN SIMON ECDC FUND

Provides ECDC staff training and technology in the classroom

DONOR

Nan & Jeff Simon

Iris & Chris Har'an

IN MEMORY

John Colavincenzo, father of Peggy Gold
Carol Maidman

DONATIONS TO TEMPLE FUNDS

DONOR

Robin & Rick Minutello

Nan & Jeff Simon

IN HONOR

Jacob Adwar becoming a Bar Mitzvah

Birth of Nora Golomb, daughter of Dana & Adam Golomb and granddaughter of Sandy & Lee Golomb

#2 LOUISE "SISSIE" SPERLING ENDOWMENT FUND

Enriches our operating budget & celebrates your commitment to our future

WALL OF REMEMBRANCE PLAQUES

(Plaques are \$360, \$750, and \$1500)

A wonderful way for a group of friends or an individual to recognize a special birthday, anniversary or any other occasion.

#12 EILEEN WOLF MEMORIAL FUND

Provides special treats for Torah Center students at holidays

DONOR

Barbara & Milt Wolf

IN MEMORY

Carol Maldman
Tanya & David Levine

#18 YAHRZEIT REMEMBRANCE FUND

Purchases new items & restores & refurbishes our sanctuary and social hall. Also for ongoing operational expenses.

DONOR

Penny & David Abrams

Esther & Mitchell Sperling
Sylvia Feinberg

Beverly Esterman
Arline Hoffman
Carl Bahm

Michelle Cohn
Helen Caplan

Joyce & Howard Simons
Annette Resnick

Barbara Trachtenberg
Veronica & Jonathan Schmerling
Margaret Tachna
Nessa Mines

Mary Cothran
Helen Caplan

Susan Lipsitz

IN MEMORY

Ida Goldstein, beloved grandmother
Diane Schrader
Dorothy Peresman, beloved mother
Benjamin Esterman
Leonard Hoffman
Gary A. Bahm, beloved father
Irene Lewis
Howard L. Caplan, beloved husband
Leona Shorr
Mae Graff, beloved mother
Florence Wiener

George Rocher
Margaret Franchek
Irving Farbstein
Marcia Farbstein
Charlotte McCaa
Julius Kolodner, beloved father
Robert Lipsitz
Herman Lipsitz

YAHRZEIT PLAQUES

DONOR

Mitchell Bober

IN MEMORY

Stanley Bober

27 ZOLOT ISRAEL ADULT SCHOLARSHIP FUND

Provides a yearly scholarship to help offset the cost of a Temple sponsored trip or Reform Movement Mission to Israel for one adult member of Temple who requires financial assistance.

DONOR

Rita & Stuart Zolot

IN MEMORY

Bernard Zolot
beloved father

DONOR

Rita & Stuart Zolot

Louis Foreman, beloved grandfather
Robert Rothschild
Amber Abrams
Beatrice Claypool
John Colavincenzo

IN HONOR

Birth of Ava & Peter Alt's grandson
Birth of Rabbi Mark & Alice Mahler's grandson
Complete & speedy recovery for Shelley Roterman Orrill
L'Shana Tova for Lee Feidman
Marriage of Mary Christine and Jerry Pearl
Gabe Rosenberg's graduation from College and new job
Melinda Freed's chanting of the Rosh Hashanah Torah Portion



HONORING THEIR MEMORY

Families of the

Following Loved Ones Will Honor Their Memories and Mark the Occasion of Their Family

November 4/5 Yetta Friedman Amper, Edith Baskin, Milton L. Goldstein, Yetta Kaufman, Enid Lesser, Freida Liss, Marvin Metosky, Frances Trachtenberg, Irving Wechsler, Ruth Tracht Blain, Thelma Cobbett, Hugo Hauser, William Learish, Julia Zubroff, Harry Barash, Anna Diskin, Wilfred Erenrich, Lois Krash, Yetta Levine, Eva Rintzler, Robert Rosecrans, Samuel Rothaus, Meyer J. Shaffer, Harold Tucker, Jeanne Glasspool, Rhea Kossoff, Rubin Levin, Ruth Miller, Pauline Ringelheim, Pauline Shiffman, Harry Soffer, Alice Sperling, Wilma Evans, Thelma Korenberg, Robert Pomerantz, Harry Seltzer, Samuel Lewis Silver, Morton Simons, Rose Barash, Rose Miller Landsman, William (Knobby) McNabb Sr., Lou Mitchell, Allan Nesvisky, Charles Presser, Esther Rosenthal, Lawrence I. Weiskopf, Phil Bloom, Garry Freid, J. Leroy (Lee) Myers, Jeanette Pepper, Leon Rintzler, Albert M. Wice
November 11/12 Ida Bahm, Betty Edelman, Harry Gerhardt,

Selma Goldstein, Jessie Pookman, Leonard Rothaus, Bennett Sack, Isidore Samler, Freda Caplan, Saul Kaufman, Louis Levy, Tessie Plotkin, Daniel Brand, Sylvia Fabricant, Lena Friss, Samuel L. Simons, Bob Wolf, Diane Slavkin Benson, Ben Fisher, Jerome Friedman, Ida Goorin, David London, Mary May, Sylvia Melnick, David Rafael, Manny Weiss, Bernard Zolot, Bella Cohen, Lillian Bebe Light, Shirley B. McQuarters, Charles Bleier, Norma Mandel, Leo Roos, Evelyn Rostalsky, Anne Zeichner, Stanley Amster, William M. Ballon, Louis S. Frankel, Joseph Genstein, Betty Goldin, Marilyn Grob

November 18/19 Sara Goldstein, Robert S. Golomb, Samuel Rubenstein, Max Russman, Louis Barr, Sam Finder, George Frankel, Alfred Teplitz, Milton Zakowitz, Jeanette Feldman, Alice McCaa Kelly, Richard Maidman, David J. Neustadt, Nettie Sasanow, Samuel Shulman, David Spitzer, Mary Blockstein, Violet Cepikoff, Myer Gewirz, Arnold Libenson, Edward J. Breman, Gertrude Feldman, Herbert Marks, Louis Reznicoff, Richard Seewald, Naomi Vatz, Joseph Braver, Roslyn Stein Favish, Milton W. Golomb, Victor Levine, Bessie Popkin, Cheryl Turoff, Jessie Yorkin

November 25/26 Bessie Budin, Estelle Gorin, Harold Guggenheim, Bertha Peresman, Myron Bleiberg, Joseph Freeman, Abe Gural, Jacob Kaufman, Jeanne M. Marple, Louise Parker, Milton O. Peresman, Peter Rosen, Maurice Sajowitz, Jacqui Solodar, Celia Isaacson, Leonard Judd, Richard Mottzman, John Bodnovich, David S. Cooper, Irving Gibbons, Jennie Labovitz, Rosella Levinson, Marga Randall, Edith Wallach, Dorothy Wiener, Estelle Baskin, Norita Berman, Larry Levkoy, Rose Schwartz, Rudolph Schwartz, Mina Sperling, Anne Bradlin, Joseph Josephson, Rhea Lehman, Jerome David Rosenblatt, Frank Simons, Marvin Abraham Tachna, Rose M. Lightman, Harry Marcus, Denise Steinberger

DUPLICATE BRIDGE

Temple Emanuel

1250 Bower Hill Road
Mt. Lebanon

12:00 P.M.

EVERY WEDNESDAY

TEMPLE'S SOCIAL HALL



Have fun and meet new people while playing the world's greatest card game!

Master Points awarded

Bring a Partner or Match Up at Game
\$6.00 per person

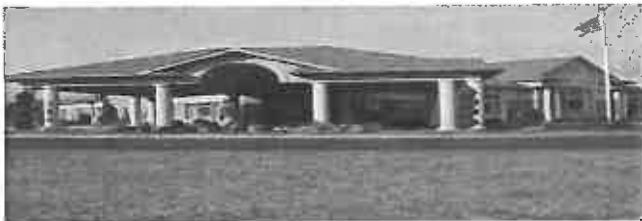
For Game Details & Information

Call: Darlene Mannheimer 412.343.0419

Or E-mail: darlenedlm@aol.com



American Contract Bridge League



William SLATER II Funeral Service

- *Serving the Jewish Community with Traditional Jewish funerals*
- *Specially Developed Tabarah Room with Mikva facilities for Chevra Kadisha*
- *Accommodations for Shomer*
- *Guaranteed advanced funeral planning*

Locally owned & operated
1650 Greentree Road – Pittsburgh, PA. 15220
412.563.2800 – Fax: 412.563.5347

Serving Scott Twp., Greentree, Carnegie, Mt. Lebanon,
Upper St. Clair and Bethel Park

Pittsburgh's Newest Funeral Home

Bring this ad to the JCC South Hills for a FREE one-week pass to try out our pool, fitness areas, gym and classes. If you join, we'll give you a FREE month* and waive the processing fee, a savings of up to \$239!

Call Membership at 412-446-4774.

Temple Emanuel Members:
GET ONE WEEK FREE

Find us on Facebook

JCC PGH

JCC of Greater Pittsburgh-South Hills
345 Kane Boulevard
Pittsburgh, PA 15243 • JCCPGH.org

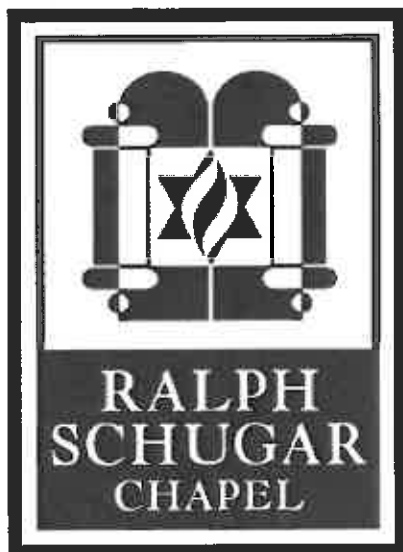
*Valid for new JCC members only with the purchase of a one year membership

Inscribe a plaque and leave your message on

“THE WALL OF REMEMBRANCE”

Each of the four panels contains dedicatory bronze plaques reminiscent of the petitionary notes left by visitors to Jerusalem's Western Wall. Memorial plaques intermingle with honorials. Inscriptions honor parents, children and grandchildren, recording births, b'nei mitzvot, confirmations and weddings. An ever increasing number of plaques have been purchased by groups of friends and family members to honor a special birthday or anniversary, or to memorialize a beloved friend or relative.

Plaques are available in three sizes: 1" x 3" for \$360; 3" x 4" for \$750; and 4" x 5" for \$1500 payable in monthly installments. For further information and/or to select the plaque of your choice call the Temple office. 412.279.7600.



**RALPH
SCHUGAR
CHAPEL**

SHARON RYAVE BRODY
*Licensed Funeral Director
Vice President and Supervisor*
Temple Emanuel Member

sharon.brody@schugar.com
412.621.8282 • 888.621.8282
FAX 412.621.5225
5509 Centre Avenue • Pittsburgh, PA 15232

www.schugar.com

Like us on Facebook: Ralph Schugar Chapel, Inc.
Follow us on Twitter: @RalphSchugarInc

Fresh! Personalized! Creative!
From brisket to bruschetta, rugelach to
risotto, poached salmon
to poached pears...

**TEMPLE EMANUEL
CATERING**

Kosher-style catering
for all Temple occasions

Melinda Freed, Catering Manager
412.279.7600
melindafreed@msn.com



JUDY NESVISKY
Certified Residential
Specialist

**Five Star
Professional
A Select Award by
Pittsburgh Magazine**
Honoring Top
Realtors for Overall
Satisfaction



RE/MAX

CSI REALTORS®
(412) 833-0900 x2531
(Cell) (412) 551-4480

I'll contribute \$250.00 to TEMPLE
EMANUEL, in your name, when you buy
or sell a home with me.

judynesvisky@yahoo.com

You've Got a Friend in
FXUR BYT
• **Dr. Sam Frank** •
"Board Certified Orthodontist"

Orthodontics for Kids and Adults

Mt. Lebanon Office
455 Cochran Road
Pittsburgh, PA 15228
412.561-4561

www.samfrankorthodontics.com

rhaina
Taylor
PHOTOGRAPHY

Bar & Bat Mitzvah
Photographer



www.rhainataylor.com ~ 412.916.1374

Cemetery Plots for Sale

A member who has moved out of state is selling 2
plots in the Temple Emanuel Section of Mt. Lebanon
Cemetery (Lot 120, Graves 1 and 2). Please contact
Leslie Hoffman if you are interested for more
information @ 412.279.7600 X 202

TEMPLE EMANUEL of South Hills

1250 Bower Hill Road
Pittsburgh Pennsylvania 15243-1380
(412) 279-7600 FAX (412) 279-7628
website: <http://www.templeemanuelpgh.org>

ADDRESS SERVICE REQUESTED

Senior Rabbi: Mark Joel Mahler, D.D., M.A.H.L.

Associate Rabbi & Director of Education:

Jessica Locketz, M.A.H.L., M.A.R.E.

Rabbi Emeritus: William Sajowitz, D.D.M.H.L.*

Executive Director: Leslie Hoffman

Early Childhood Development Center Director:

Iris Harlan, M.Ed.

Bulletin Editor: Linda Friedman Frankel

President: David Weisberg

V. President: Michelle Markowitz

V. President: David Rullo

V. President: Renee Tatro

V. President: Jeffrey Young

Financial Secretary: Keith Abrams

Financial Secretary: Helaine Labovitz

Treasurer: Lee Golomb

Treasurer: Jason A. Green

Secretary: Mary Cothran

*deceased

Non-Profit
US Postage
PAID
Pittsburgh, PA
Permit #2207

TIME VALUE
